

Socrative: A Unique Classroom Response System

Susan Hussein:

- To get ready, open a browser on any smart device.
- You may also want to download and install the free Socrative app (Android or Mac).
- PDF of presentation: <http://tinyurl.com/ELD12-Socrative>

To get the app

- Socrative Student (Android)
- Socrative Student (Mac iOS)

or just open a browser on any device and go to

- socrative.com



This one



By the end of the session, you will be able to

- State what internet-based classroom response systems are, and what they do.
- Explain the main choices and trade-offs involved in selecting a system.
- Mention some alternatives to Socrative.
- Describe the Socrative experience from a student point of view.
- Understand how it works. (Basic nuts and bolts.)
- Explain how Socrative can be used to engage and motivate students.

Classroom response systems

- Gather information from students during class AND
- Share the results live with participants
- Internet systems use text-messaging or browsers to replace physical devices.

A good system should be able to

- Assess learning (true/false, multiple-choice, short answer) AND (sometimes)
- Promote discussion (esp. if free response for audience ideas, questions)

Response Systems Compared

| Name | Url | Free to Use | Free Resp. | Special Strengths | Weaknesses |
|-----------------|--|------------------|------------|---|--|
| ClassPager | classpager.com | ✓ | ✓ | No short codes; students can use free SMS services | Mainly an SMS system for communication with up to 25 students. |
| Fluid Surveys | fluidsurveys.com | ✗ | ✓ | Professional polling: Survey logic Many other tools | Not suitable for live classroom situations. |
| GoSoapBox | gosoapbox.com | ✗ | ✓ | Pedagogy: Confusion meter Question collection | \$15/month or \$90/year |
| Let's Go Vote | letsgovote.com | ✓ | ✗ | PPT integration | User must keep typing "VOTE + space" Up to 20 users |
| Mentimeter | http://mentimeter.com | ✓ | ✗ | PPT integration Simple interface. | Business model? No paid accounts. |
| Poll Daddy | polldaddy.com | ✓ | ✗ | Embed on Facebook, Wordpress Blog, etc. | More of a competitor for Urtak, Survey Monkey |
| Poll Everywhere | polleverywhere.com | ✓ | ✓ | PPT integration | Up to 40 responses. One question at a time. |
| Socrative | socrative.com | ✓ | ✓ | Focus on pedagogical goals. | Up to 35 responses. Business model? |
| Text the Mob | textthemob.com | 3 Items with Ads | ✗ | | Beta, with limited display options. May be defunct. |

Instant Audience Feedback

Try voting on a multiple choice poll

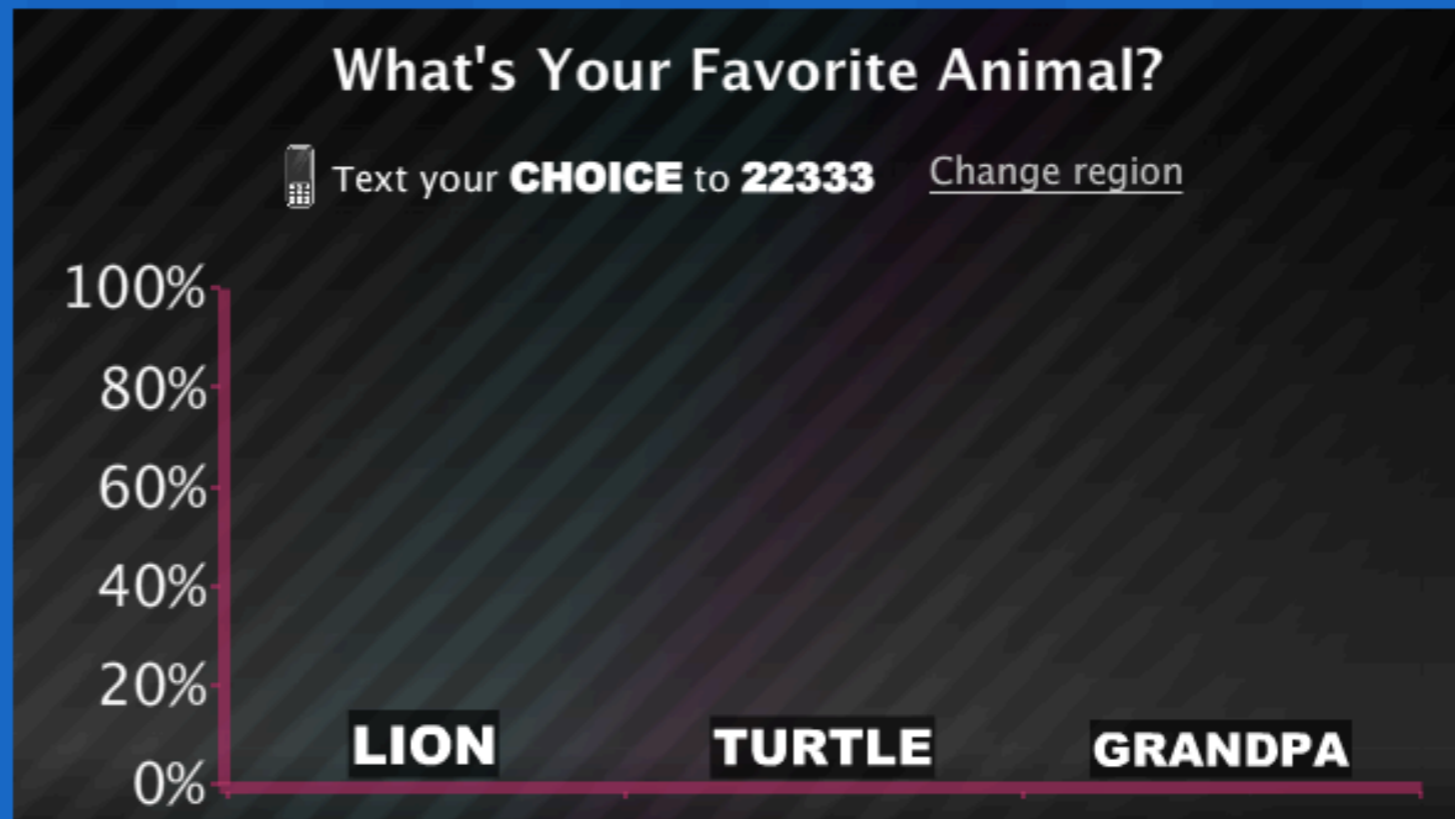
Text a free text poll

Watch the demo video

How does Poll Everywhere work?

Create your first poll

Takes 30 seconds. No signup required.



PollEverywhere:
www.polleverywhere.com

- Great for public polls
- Advanced features require a paid account

What are you hoping to take away today?



Text a **CODE** to **37607**



Submit a **CODE** to <http://PollEv.com>

Curiosity: I want to see what's out there. **20008**

Directions: I want to learn to how use new technology. **51257**

Ideas: I want to learn how I might put new technologies to work for me. **51260**

Recovery: Frankly, I just sat down here to finish my coffee. I'm not awake yet. **51794**

Total Results: **1**



powered by **Poll Everywhere**

Live Audience Polling



Please enter the room number:

Room number: sbh

Join Room

By logging in you are agreeing to our [Terms](#) and [Privacy Policy](#)

When you see the screen above, enter the “sbh” room to get the screen below.

Log Out

Dashboard

Room number

sbh

Please wait for teacher to start next activity...



Socrative

- Can be run from a browser or from an app - or both at once.
- Can be used with (but not within) PPT/Keynote using the app or Mac finger swipes.

⇒S

Socrative

- Questions can be asked orally, projected on the screen, or retrieved from a bank of saved instruments made by the instructor.
- Questions may have one or more correct answers, or be open-ended.
- They may be asked one by one, or as part of a prepared “quiz.”

⇒T

Results of items with correct answers

- Can be displayed in the browser, or downloaded, or both, as Excel files.
- Downloaded spreadsheets include all responses to prepared instruments, color coded to show correct ones. These records are also saved on the server.

Anonymous comments, ideas, or feedback

- Can be solicited at any point where feedback seems desirable or a teaching moment seems to be developing.
- A drawback: Responses to spur-of-the moment questions are not saved on the server. (Snapshots may be made. I use Jing.)

What aspect of Socratic deserves the major share of our attention today?

- Take a minute to think about this question.
- Share with a neighbor and provide a joint response.

⇒T

Let's see how this is done.

- Working with prepared quizzes: creating, sharing, choosing.
- Exit tickets - Students can respond serially if they are sharing devices.

⇒T

Exit ticket asks

- Name
- How well did you get it? - clickable choices
- What did you learn? - free response
- Solve the problem on the board.

Space race.

- A good change of pace for occasional use.
- Any quiz with several questions in it can be used.

Results and examples

- Example shown is a spreadsheet resulting from a prepared instrument soliciting free input, and therefore does not show “right” and “wrong” responses
- Names of students have been hidden.

Helen I

| ◇ | C | D |
|----|--|---|
| 1 | | |
| 2 | | |
| 3 | | |
| 4 | | |
| 5 | What kind of woman is Helen of Troy, according to Homer in the first three books of the Iliad? | What lines of the Iliad support your claim about Helen? Number the lines. |
| 6 | | |
| 7 | | |
| 8 | Beautiful but not sure what she wants | 3.142-144 |
| 9 | To me, it seems like she doesn't care where she goes as long as she has a boyfriend | 3. 429-435 |
| 10 | Helen is told to be a beautiful honorable woman | 3.94 |
| 11 | She is a woman that is constantly fought for and over, seen as a prize | 3.456-463 |
| 12 | Helen of Troy as described in the first three books of the Iliad is a rebellious woman | Unclear but could be supported with main reactions by |
| 13 | Powerful | Dont know |
| 14 | She is very popular | 3.138-141 |
| 15 | | |
| 16 | She is the wife of Menelaus from Achaeans who left him to go to Troy with her love | 3.167 |
| 17 | She was beautiful, but weak minded and easy. | 3.182-186 |
| 18 | She's easy. | 30 |
| 19 | | |
| 20 | A wife to Paris | 3. 139 on |
| 21 | she is the type of woman who causes conflict because of men's temptations towards her | book 3 line 73-75 |
| 22 | Beautiful | |
| 23 | she is the woman that many men desire and they are willing to fight for their own honor | in book three line 70 through 75 it states that the two men |
| 24 | Beautiful | are willing to go to war over this woman even though it will |
| 25 | Zeus' daughter | send two countries into turmoil |

Results of open-ended probing question

How this was used (follow-up)

- Students were asked a MC version of the same question, with responses that *could* reasonably be supported from the text.
- All responses were graded “correct.” (Students were ecstatic.)
- After responding, they were assigned to groups and assigned to use the text to defend one of the options, whether or not they had chosen that one.

Results of exercise

- Despite initial misgivings, the class loved the activity.
- From then on, most of them showed that they understood the idea of using evidence from a text to back up an (informed) opinion.
- They began to be more comfortable with uncertainty and worry a little less about offering “wrong” answers.

Helen II

B



4

5 What is the most significant thing you learned today?

6

7 I learned about Helen and Aphrodite how many different ways we can view Helen and from what she really is also the actual

8 Homer created his characters in a way where they can be perceived in many different ways

9 There is not always a right or wrong answer

10 How to fight my case even if I am uncertain

11 Helen was very self centered

12 The significant thing I learned today is about who Helen is and how she is portrayed in the Iliad

13 Who Helen really was

14 About how Homer painted a picture of the first years of the war in the last years

15 Helen was a very controversial character

16 That Homer's Helen is seen many different ways and that there are lines from the text that could support all the claims we learned

17 6 levels of Troy.

18 I learned that sometimes there is not one right or wrong answer to everything and that there can be many different ways that

19 The most significant thing I learned today was about specific characters' thoughts and ideas such as Helen

20 Helen was a hot "bitch"

21 Shields are how you identify the fighters in the arena.

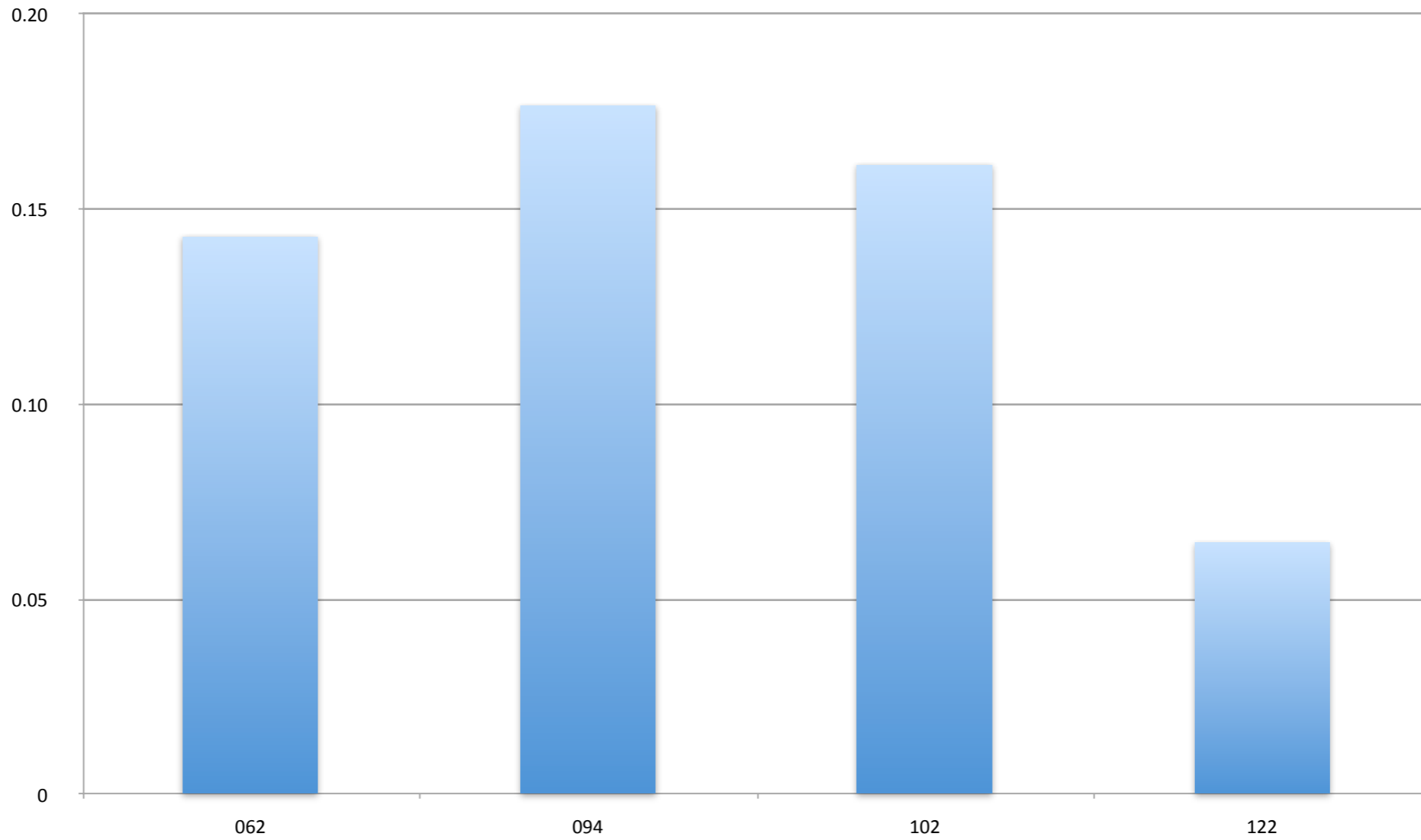
22 That beauty determined your place in society.

Immediate results of three-step activity

Longterm results

- For first time ever, I did not receive any midterm essays that were completely empty of specific content.
- Essays on the final were on a better level that I have come to expect.

GNHU 115 Students Who Dropped



More students stayed with the course to the end.

Your turn

Are you having any ideas? How might you use Socratic?

What questions do you have?

Anything else you might like to have demonstrated?