



Co-funded by the
Erasmus+ Programme
of the European Union

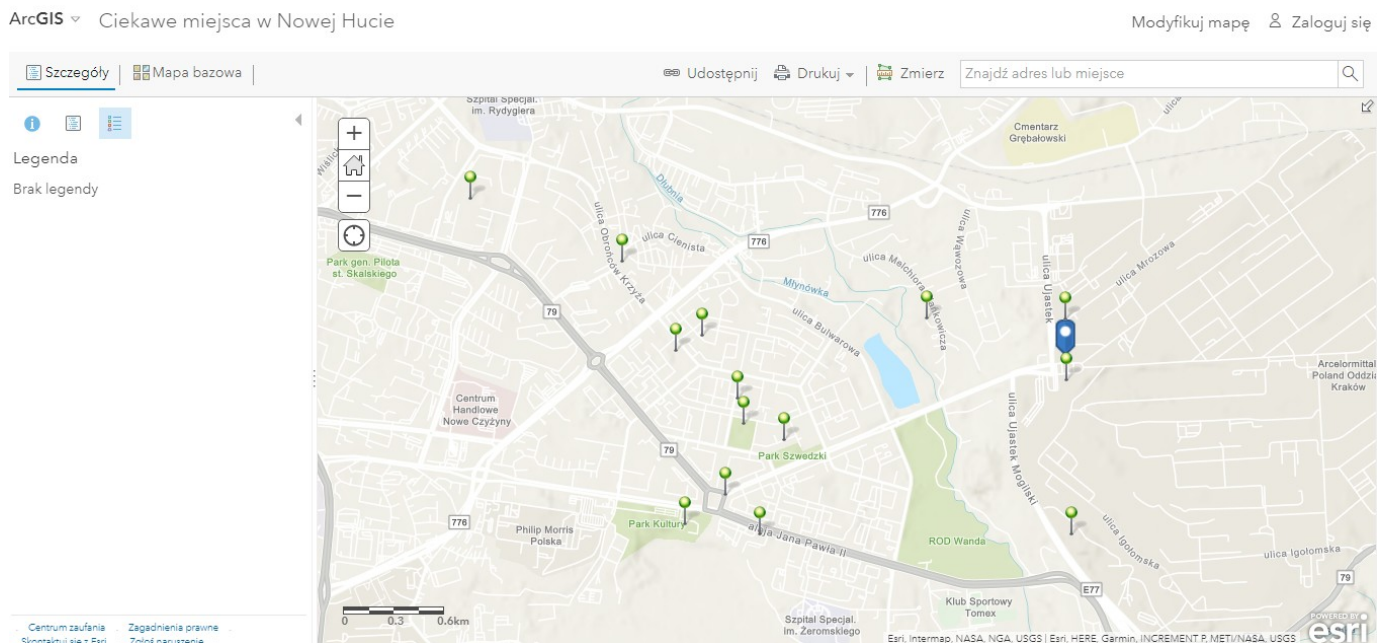


Follow-up

Industrial heritage – Nowa Huta district, Kraków

In early December 2020 pupils (2e2) with their Geography teacher prepared a city web-based map about Nowa Huta district of Kraków, where our school is located. They implemented ArcGIS software provided by ESRI during Gis Day 2020. They selected attractive sights and museums of our area, placed them over the city plan and pinned information about each of the chosen sights.

https://www.arcgis.com/home/webmap/viewer.html?webmap=b992137bd86e4bbb835c92b53f732a91&fbclid=IwAR390TIqTORN_TUfeU09XK_GwOt5l7p3b_xp65H7P-ae6AM6vJ-IVYwWTpU



Disclaimer

„The European Commission support for the production of this publication does not constitute an endorsement of the contents which reflects the views only of the authors, and the Commission cannot be held responsible for any use which may be made of the information contained therein.”