



Co-funded by the
Erasmus+ Programme
of the European Union

WATER

Wisdom and Activity Through Enjoyable Realisation

2017-1-SK01-KA219-035367_2

Interactive map of the Czech Republic



The European Commission's support for the production of this publication does not constitute an endorsement of the contents, which reflect the views only of the authors, and the Commission cannot be held responsible for any use which may be made of the information contained therein.

Instructions to the game / quiz

The game / quiz is for 2 – 6 pupils. They will need:

- the map of the Czech Republic with QR Codes or the map in Thinglink
- the particular cards with questions
- the Smartphones or tablets with QR code reader

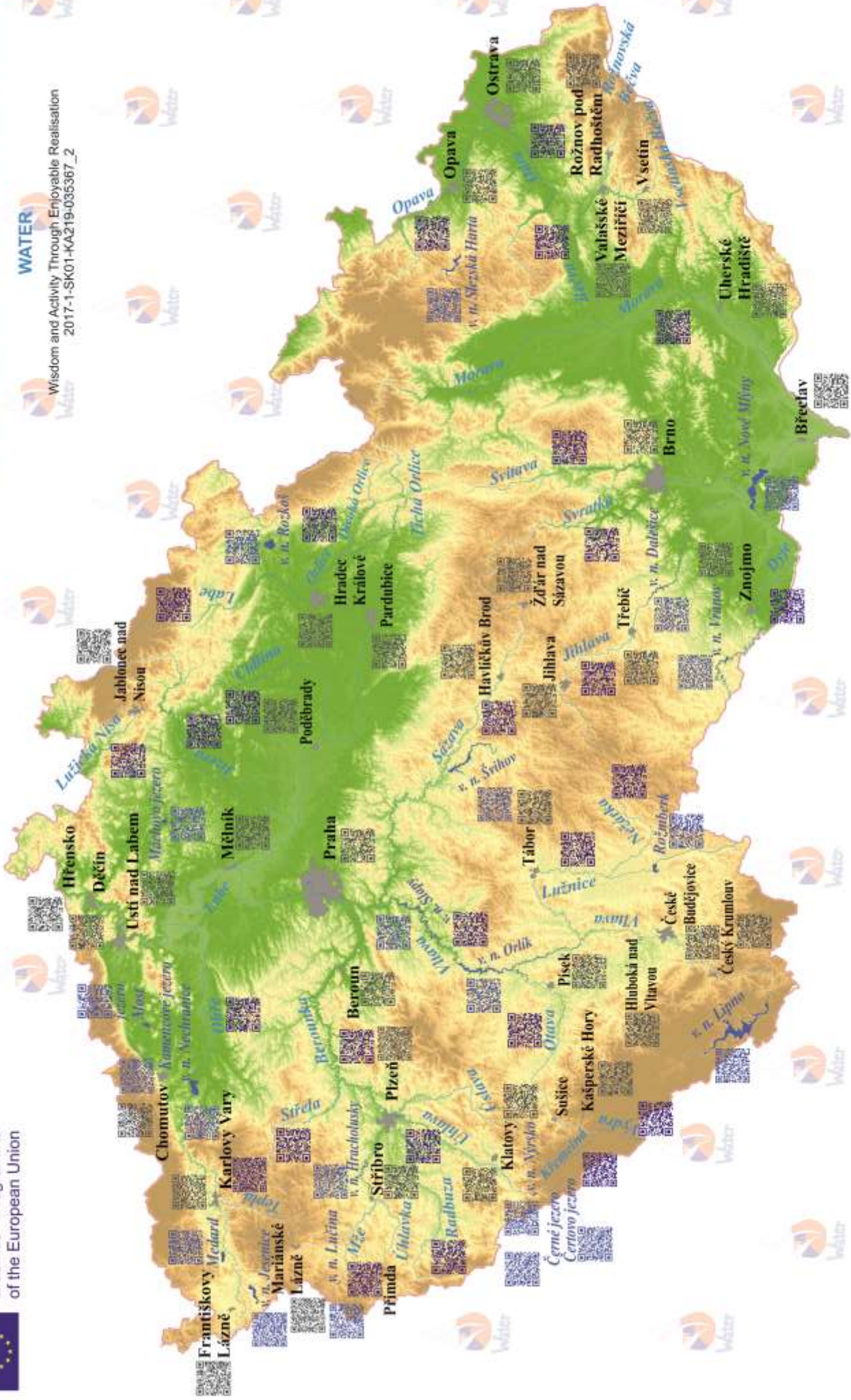
At the beginning, pupils decide who will start the game, then they'll take turns clockwise. The cards lie on the desk, the questions are on the "bottom" site of the cards. The first pupil picks up one card, reads the question and looks for the answer. He / she looks for the place mentioned on the card in the map, uses his / her Smartphone or tablet to read the QR code or uses the map in Thinglink. As soon as he / she finds the answer on the Internet he / she will tell the answer to the others. For each correct answer, he / she'll get a point. The winner is the pupil who'll get the most points.



Co-funded by the
Erasmus+ Programme
of the European Union

INTERACTIVE MAP OF THE CZECH REPUBLIC

WATER
Wisdom and Activity Through Enjoyable Realisation
2017-1-SK01-KA219-035367_2



Labe

How was Elbe called in the Middle Ages?

- a) Elba
- b) Albis
- c) Elfis



Vltava

Vltava is the longest river in the Czech Republic - how long is it?

- a) 330 km
- b) 530 km
- c) 430 km



Ohře

The name Ohře comes from Celtic origin and it means, that there used to live:

- a) salmons
- b) carps
- c) trout



Mže

Where does the river Mže spring?

- a) in Germany
- b) in Austria
- c) in the Czech Republic



Radbuza

How long is the river Radbuza?

- a) ca 200 km
- b) ca 100 km
- c) ca 300 km



Úhlava

Where is the spring of the river Úhlava?

- a) on the slope of Sněžka
- b) on the slope of Čerchov
- c) on the slope of Pancíř



Úslava

What's the name of the upper-reaches of Úslava?

- a) Bradlava
- b) Hadrava
- c) Úslavka



Berounka

What was the original name of Berounka?

- a) Radbuza
- b) Úhlava
- c) Mže



Sázava

What river does Sázava empty into?

- a) Labe
- b) Vltava
- c) Morava



Odra

Odra flows through:

- a) Prague
- b) Ostrava
- c) Brno



Morava

When were the catastrophic floods in the Czech Republic

- a) in 1997
- b) in 2007
- c) in 2017



Dyje

It flows through the border area between:

- a) Czech Republic and Slovakia
- b) Czech Republic and Poland
- c) Czech Republic and Austria



Úhlavka

Úhlavka springs not far from Přimda and it flows into:

- a) Radbuza
- b) Mže
- c) Berounka

(see the map)



Otava

What used to be found in Otava river?

- a) gold and silver
- b) gold and pearls
- c) pearls and diamonds



Lužnice

What does the name Lužnice mean?

- a) water flowing through meadows
- b) water flowing through forests
- c) water flowing through mountains



Nežárka

Nežárka flows through:

- a) Jindřichův Hradec
- b) Hradec Králové
- c) Dvůr Králové



Orlice

What are the names of the two "springs" of Orlice river?

- a) Tichá and Bouřlivá Orlice
- b) Tichá and Divoká Orlice
- c) Klidná and Divoká Orlice



Svratka

Where does Svratka spring?

- a) in the Bohemian Forest
- b) in the Giant Mountains
- c) in the Bohemian-Moravian Highlands



Bečva

How many source streams does the river Bečva have?

- a) 2
- b) 3
- c) 4



Křemelná

How many mills used to be on the river in the past?

- a) 24
- b) 21
- c) 18



Vydra

The Czech name of this river comes from animals that lived there:

- a) beavers
- b) otters
- c) muskrats



Svitava

What river does Svitava flow into?

- a) Morava
- b) Jihlava
- c) Svatka



Jizera

What origin is the river's name of?

- a) Celtic
- b) German
- c) Slavic



Teplá

Why was the river called "Teplá"?

- a) it is heated by the thermal springs and doesn't freeze
- b) its water is very warm in summer
- c) the temperature of the water is more than 25 °C



Cidlina

What dynasty used to live in the gord above Cidlina in the Early Middle Ages?

- a) the Piast dynasty
- b) the Přemyslid dynasty
- c) the Slavník dynasty



Jihlava (river)

In which historic country of the Czech Republic does the river flow?

- a) in Bohemia
- b) in Moravia
- c) in Silesia



Střela

What is the name of the smallest historic Bohemian town?

- a) Rabštejn nad Střelou
- b) Gutštejn nad Střelou
- c) Volfštejn nad Střelou



Lužická Nisa

Why is the river called “Lužická” Nisa?

- a) it flows through riparian forests (Czech “lužní lesy”)
- b) it flows through the wet meadows (Czech “luhy”)
- c) it flows through the historic country Lusatia (Czech “Lužice”)



Opava (river)

This river creates the border between:

- a) the Czech Republic and Poland
- b) the Czech Republic and Slovakia
- c) the Czech Republic and Austria



Opava (town)

Where is Opava situated?

- a) in Bohemia
- b) in Moravia
- c) in Silesia



Mariánské Lázně

What is the most famous mineral spring in Mariánské Lázně?

- a) Forest spring
- b) Ferdinand's spring
- c) Cross spring



Františkovy Lázně

The town belongs to the West Bohemian Spa Triangle together with:

- a) Karlovy Vary and Mariánské Lázně
- b) Karlovy Vary and Konstantinovy Lázně
- c) Mariánské Lázně and Konstantinovy Lázně



Havlíčkův Brod

What was the original name of the town?

- a) Německý Brod
- b) Smilův Brod
- c) Český Brod



Karlovy Vary

What is the temperature of Vřídlo, the hottest spring in the Czech Republic?

- a) 62 °C
- b) 72 °C
- c) 82 °C



Praha

What was the original name of Charles Bridge?

- a) New Bridge
- b) Beautiful Bridge
- c) Stone Bridge



Mělník

Where is Mělník situated?

- a) on the confluence of Vltava and Labe
- b) on the confluence of Vltava and Sázava
- c) on the confluence of Labe and Cidlina



Ústí nad Labem

What does the name "Ústí" mean?

- a) river bed
- b) river bank
- c) river mouth



Hřensko

Hřensko is situated at the lowest altitude of the Czech Republic. Its elevation is:

- a) 30 m above sea level
- b) 130 m above sea level
- c) 230 m above sea level



Hradec Králové

What musical instruments are produced here?

- a) pianos
- b) drums
- c) violins



Žďár nad Sázavou

What is the name of the World Heritage Site here?

- a) Church of St. Barbara
- b) Pilgrimage Church of St. John of Nepomuk
- c) St. Procopius Basilica



Hluboká nad Vltavou

What castle is Hluboká similar to?

- a) Prague Castle
- b) Versailles
- c) Windsor Castle



Ostrava

In which historic country is Ostrava situated?

- a) in Bohemia
- b) in Moravia
- c) in Silesia



Písek

The oldest bridge in the Czech Republic is sometimes called (according to a legend):

- a) Old Bridge
- b) Stag Bridge
- c) Stone Bridge



Stříbro

What kind of medieval towns used to be by Stříbro?

- a) mining town
- b) dowry town
- c) subjects town



Plzeň

Plzeň is situated on the confluence of four rivers:

- a) Mže, Berounka, Úhlava, Úslava
- b) Mže, Radbuza, Úhlavka, Berounka
- c) Mže, Radbuza, Úhlava, Úslava



Kašperské Hory

Which ore was mined in Kašperské Hory in the Middle Ages?

- a) iron ore
- b) gold ore
- c) silver ore



Chomutov

Where can you find the animals like wolf, European bison etc.?

- a) in the Ore Mountains Zoo
- b) in the National Park in Chomutov
- c) in the Town Park in Chomutov



Jihlava

What animal that lives in the Czech Republic is in the coat of arms of Jihlava?

- a) a deer
- b) a snake
- c) a hedgehog



Klatovy

What is the famous sight of Klatovy that is connected with the Jesuit church?

- a) the catacombs
- b) the Black tower
- c) the Baroque Pharmacy



Sušice

What is produced in the factory Solo Sušice?

- a) porcelain ware
- b) matches
- c) pencils



Český Krumlov

Which sight of Český Krumlov belongs to the UNESCO World Heritage?

- a) theatre
- b) church
- c) castle



České Budějovice

The square in České Budějovice is called after the famous Bohemian King:

- a) Ottokar I
- b) Ottokar II
- c) Charles IV



Tábor

The town was found in 1420 by:

- a) the King
- b) the Bishop
- c) the Hussites



Beroun

What animal can you find on the flag of Beroun?

- a) a lion
- b) a bear
- c) fish



Poděbrady

What diseases are treated in Poděbrady?

- a) cardiovascular diseases
- b) musculoskeletal system diseases
- c) respiratory system diseases



Děčín

In Bohemian Switzerland near Děčín there are rocks:

- a) sandstone
- b) limestone
- c) flint stone



Jablonec nad Nisou

Which tree can you find in the coat of arms of Jablonec?

- a) pear tree
- b) cherry tree
- c) apple tree



Pardubice

What animal can you find in the coat of arms of Pardubice?

- a) a bear
- b) a horse
- c) a dog



Třebíč

What sights from Třebíč belong to the UNESCO World Heritage Site?

- a) St. Procopius Basilica and the Jewish cemetery
- b) St Barbara Basilica and the Jewish Quarter
- c) St Procopius Basilica and the Jewish Quarter



Znojmo

Znojmo is famous for production of:

- a) apricots
- b) cucumbers
- c) peppers



Brno

What sight belongs to the UNESCO World Heritage Site?

- a) Villa Tugendhat
- b) Špilberk castle
- c) Cathedral of Saints Peter and Paul



Břeclav

What is the name of the famous gord from Great Moravian times?

- a) Břeclav
- b) Pohansko
- c) Staré Město



Uherské Hradiště

What is the name of the famous pilgrimage spot near Uherské Hradiště?

- a) Staré Město
- b) Pohansko
- c) Velehrad



Vsetín

What is the name of this region?

- a) Hanakia
- b) Wallachia
- c) Moravian Slovakia



Valašské Meziříčí

The name "Meziříčí" means "between the rivers". What are the names of the local rivers?

- a) Vsetínská Bečva and Rožnovská Bečva
- b) Vsetínská Bečva and Horní Bečva
- c) Rožnovská Bečva and Dolní Bečva



Rožnov pod Radhoštěm

The name Radhošť is connected with the old Slavic god:

- a) Svarog
- b) Triglav
- c) Radegast



Kašperk Castle

(see the QR code of Kašperské Hory)

the castle was built by:

- a) the King Charles IV
- b) the King Ottokar II
- c) the King Wenceslaus IV



Přimda

What sight in Přimda was built in the Romanesque style?

- a) the church
- b) the town hall
- c) the castle



Švihov

This water reservoir has the same name as a sight in Western Bohemia.

This sight is:

- a) a church
- b) an observation tower
- c) a water castle



Medard Lake

How was the lake created?

- a) by flooding the former coal mine
- b) by flooding three villages in a deep valley
- c) it is a natural lake



Most Lake

This "lake" was built during the recultivation of the landscape. It was created from the old mine of:

- a) gold
- b) black coal
- c) brown coal (lignite)



Kamencové Lake

It is the only alum lake in the world.

There live only:

- a) fish
- b) protozoans
- c) amphibians



Lake Mácha

This lake was named after Bohemian poet Karel Hynek Mácha, but it was built by the King:
a) Ottokar II
b) Charles IV
c) Joseph II



Rozkoš Lake

What is the function of this water reservoir?
a) flood prevention
b) hydroelectric power station
c) recultivation



Slezská Harta

How many villages were flooded during its building?
a) 6
b) 8
c) 10



Dalešice

What kind of turbines does the hydroelectric power station use?
a) Tesla turbines
b) Kaplan turbines
c) Francis turbines



Lipno

This water reservoir borders the National park:
a) Krkonoše
b) Šumava
c) Podyjí



Vranov

Why was the water reservoir Vranov built?
a) for power generation
b) to prevent floods
c) for recreation



Orlík

Castle Orlík is situated above the Orlík water reservoir. It was built metres above the river:
a) 40
b) 50
c) 60



Jesenice

What is the nearest city of the water reservoir Jesenice?
a) Cheb
b) Karlovy Vary
c) Sokolov



Nové Mlýny

How many reservoirs do build Nové Mlýny?
a) 2
b) 3
c) 4



Rožmberk

Rožmberk is the largest pond in Central Europe. It was built by:

- a) Štěpánek Netolický
- b) Mikuláš Ruthard
- c) Jakub Krčín



Lučina

Water reservoir Lučina was built as a reservoir of drinking water on the river:

- a) Mže
- b) Radbuza
- c) Úhlava



Hracholusky

This water reservoir on the river Mže is dedicated to recreation. It was built:

- a) from a former pond
- b) in a valley
- c) from a former peat bog



Černé jezero

What is the origin of this lake?

- a) artificial
- b) tectonic
- c) glacial



Čertovo jezero

This is the only glacial lake in Šumava that belongs to the drainage basin of:

- a) the river Elbe and the North Sea
- b) the river Danube and the Black Sea
- c) the river Oder and the Baltic Sea



Lake Laka

This is the glacial lake in Šumava:

- a) smallest
- b) largest



Nýrsko

(water reservoir)

Why was the water reservoir Nýrsko built?

- a) as drinking water reservoir
- b) to prevent floods
- c) for recreation



Nechranice

The water reservoir was built on the river:

- a) Mže
- b) Ohře
- c) Vltava



Slapy

Is there a hydroelectric power station?

- a) yes
- b) no



Correct answers

Rivers

- 1) **Bečva** – a) 2
- 2) **Berounka** – c) Mže
- 3) **Cidlina** – a) the Slavník dynasty
- 4) **Dyje** – c) Czech Republic and Austria
- 5) **Jihlava** – b) in Moravia
- 6) **Jizera** – a) Celtic
- 7) **Křemelná** – b) 21
- 8) **Labe** – b) Albis
- 9) **Lužická Nisa** – c) it flows through the historic country Lusatia (Czech “Lužice”)
- 10) **Lužnice** – a) water flowing through meadows
- 11) **Morava** – a) in 1997
- 12) **Mže** – a) in Germany
- 13) **Nežárka** – a) Jindřichův Hradec
- 14) **Odra** – b) Ostrava
- 15) **Ohře** – a) salmon
- 16) **Opava** – a) the Czech Republic and Poland
- 17) **Orlice** – b) Tichá and Divoká Orlice
- 18) **Otava** – b) gold and pearls
- 19) **Radbuza** – b) ca 100 km
- 20) **Sázava** – b) Vltava
- 21) **Střela** – a) Rabštejn nad Střelou
- 22) **Svitava** – c) Svratka
- 23) **Svratka** – c) in the Bohemian-Moravian Highlands
- 24) **Teplá** – a) it is heated by the thermal springs and doesn't freeze
- 25) **Úhlava** c) on the slope of Pancíř
- 26) **Úhlavka** – b) Mže
- 27) **Úslava** – a) Bradlava
- 28) **Vltava** – c) 430 km
- 29) **Vydra** – b) otters

Water reservoirs, lakes and ponds

- 1) **Černé jezero** – c) glacial
- 2) **Čertovo jezero** – b) the river Danube and Black Sea
- 3) **Dalešice** – c) Francis Turbines
- 4) **Hracholusky** – b) in a valley
- 5) **Jesenice** – a) Cheb
- 6) **Kamencové Lake** – b) protozoans
- 7) **Lake Laka** – a) smallest
- 8) **Lake Mácha** – b) Charles IV
- 9) **Lipno** – b) Šumava
- 10) **Lučina** – a) Mže
- 11) **Medard** – a) by flooding the former coal mine
- 12) **Most Lake** – c) brown coal (lignite)
- 13) **Nechranice** b) Ohře
- 14) **Nové Mlýny** – b) 3
- 15) **Nýrsko** – a) as drinking water reservoir
- 16) **Orlík** – c) 60

- 17) **Rozkoš** – a) flood prevention
- 18) **Rožmberk** – c) Jakub Krčín
- 19) **Slapy** – a) yes
- 20) **Slezská Harta** – a) 6
- 21) **Švihov** – c) a water castle
- 22) **Vranov** – b) to prevent floods

Towns, cities and castles

- 1) **Beroun** – b) a bear
- 2) **Brno** – a) Villa Tugendhat
- 3) **Břeclav** – b) Pohansko
- 4) **České Budějovice** – b) Ottokar II
- 5) **Český Krumlov** – c) castle
- 6) **Děčín** – a) sandstone
- 7) **Františkovy Lázně** – a) Karlovy Vary a Františkovy Lázně
- 8) **Hluboká nad Vltavou** – c) Windsor Castle
- 9) **Havlíčkův Brod** – b) Smilův Brod
- 10) **Hradec Králové** – a) pianos
- 11) **Hřensko** – b) 130 m above sea level
- 12) **Chomutov** – a) in the Ore Mountain Zoo
- 13) **Jablonec nad Nisou** – c) apple tree
- 14) **Jihlava** – c) a hedgehog
- 15) **Karlovy Vary** – b) 72 °C
- 16) **Kašperk** – a) the King Charles IV
- 17) **Kašperské Hory** – b) gold ore
- 18) **Klatovy** – a) the catacombs
- 19) **Mariánské Lázně** – c) Cross spring
- 20) **Mělník** – a) on the confluence of Vltava and Labe
- 21) **Opava** – c) in Silesia
- 22) **Ostrava** – c) in Silesia
- 23) **Pardubice** – b) horse
- 24) **Písek** – b) Stag Bridge
- 25) **Plzeň** – c) Mže, Radbuza, Úhlava, Úslava
- 26) **Poděbrady** – a) cardiovascular diseases
- 27) **Praha** – c) Stone Bridge
- 28) **Přimda** – c) the castle
- 29) **Rožnov pod Radhoštěm** – c) Radegast
- 30) **Stříbro** – a) mining town
- 31) **Sušice** – b) matches
- 32) **Tábor** – c) the Hussites
- 33) **Třebíč** – c) St Procopius Basilica and the Jewish Quarter
- 34) **Uherské Hradiště** – c) Velehrad
- 35) **Ústí nad Labem** – c) river mouth
- 36) **Valšské Meziříčí** – b) Vsetínská Bečva an Rožnovslá Bečva
- 37) **Vsetín** – b) Wallachia
- 38) **Znojmo** – b) cucumbers
- 39) **Žďár nad Sázavou** – b) Pilgrimage Church of St. John of Nepomuk

Sources

Rivers

- 1) Bečva - https://cs.wikipedia.org/wiki/Soubor:%C5%98eka_Be%C4%8Dva_z_mostu_u_l%C3%A1zn%C3%AD_Teplice_nad_Be%C4%8Dvou,_okres_P%C5%99erov.jpg
- 2) Berounka - https://commons.wikimedia.org/wiki/Berounka#/media/File:Berounka_River_CZ_from_Dolany_Bridge_596.jpg
- 3) Cidlina - <https://upload.wikimedia.org/wikipedia/commons/b/b8/Cidlina.jpg>
- 4) Dyje - https://commons.wikimedia.org/wiki/File:Moravská_Dyje,_Dačice_01.jpg
- 5) Jihlava - https://upload.wikimedia.org/wikipedia/commons/1/12/Lhánice_-_řeka_Jihlava_z_vyhličky_Na_Babách_obr2.jpg
- 6) Jizera - <https://cs.m.wikipedia.org/wiki/Soubor:Jizera.jpg>
- 7) Křemelná - <https://cs.wikipedia.org/wiki/Soubor:Křemelná.JPG>
- 8) Labe - <https://pixabay.com/cs/photos/labe-%C5%99eka-z%C3%A1pad-slunce-2960115/>
- 9) Lužická Nisa - https://sk.wikipedia.org/wiki/Lu%C5%BEick%C3%A1_Nisa#/media/S%C3%BAbor:Lu%C5%BEick%C3%A1_Nisa.jpg
- 10) Lužnice - https://commons.wikimedia.org/wiki/File:Be%C4%8Dice,_Lu%C5%BEnice_River.jpg
- 11) Morava - <https://pixabay.com/cs/photos/p%C5%99%C3%ADroda-%C5%99eka-morava-krajina-3537707/>
- 12) Mže – own photo
- 13) Nežárka - https://commons.wikimedia.org/wiki/File:Doln%C3%AD_%C5%BD%C4%8F%C3%A1r,_Ne%C5%BE%C3%A1rka_river.jpg
- 14) Odra - https://cs.m.wikipedia.org/wiki/Soubor:Odra,_Ostrava-Koblov.jpg
- 15) Ohře – own photo
- 16) Opava - <https://cs.m.wikipedia.org/wiki/Soubor:Opava6.jpg>
- 17) Orlice - <https://pixabay.com/cs/photos/%C5%99eka-divok%C3%A1-orlice-vodn%C3%AD-tok-voda-4422821/>
- 18) Oslava - <https://cs.wikipedia.org/wiki/Soubor:Udolioslavy.jpg>
- 19) Otava - <https://cs.wikipedia.org/wiki/Soubor:Proti-proudu-Otava-sm%C4%9Br-%C4%8Ce%C5%88kova-pila.jpg>
- 20) Radbuza - <https://commons.wikimedia.org/wiki/File:Radbuza-Dobraný.jpg>
- 21) Sázava - <https://pixabay.com/cs/photos/ostrov-soutok-s%C3%A1zava-vltava-podzim-1863031/>
- 22) Střela - https://commons.wikimedia.org/wiki/File:Silnicni_most_Rabstejn_nad_Strelou.JPG
- 23) Svitava - https://cs.m.wikipedia.org/wiki/Soubor:Svitava_mezi_B%C3%ADlovcemi_a_Brnem.jpg
- 24) Svratka - https://cs.wikipedia.org/wiki/Soubor:Svratka-Komin_2011.jpg
- 25) Teplá - <https://pixabay.com/cs/photos/hork%C3%A9-prameny-%C5%99eka-zimn%C3%AD-dvojice-2300663/>
- 26) Úhlava - https://commons.wikimedia.org/wiki/Category:%C3%9Ahlava#/media/File:Uhlava_in_Sumava.jpeg
- 27) Úhlavka - https://cs.wikipedia.org/wiki/Soubor:%C3%9Ahlavka,_nedaleko_m%C4%9Bsta_Kladruby_II.JPG
- 28) Úslava - [https://commons.wikimedia.org/wiki/File:Star%C3%BD_Plzenec,_%C3%9Aslava_\(1\).jpg](https://commons.wikimedia.org/wiki/File:Star%C3%BD_Plzenec,_%C3%9Aslava_(1).jpg)
- 29) Vltava - <https://pixabay.com/cs/photos/meandry-vltava-%C5%A1umava-%C5%99eka-les-1316548/>
- 30) Vydra - <https://commons.wikimedia.org/wiki/File:%C5%98eka-Vydra-Rechle.jpg>

Water reservoirs, lakes and ponds

- 1) Černé jezero – own photo
- 2) Čertovo jezero – own photo

- 3) Dalešice - https://upload.wikimedia.org/wikipedia/commons/0/0f/Elektrárna_Dalešice-alibaba_-_panoramio.jpg
- 4) Hracholusky – own photo
- 5) Jesenice - https://commons.wikimedia.org/wiki/File:Jesenice_Reservoir_from_Okrouhl%C3%A1_2.jpg
- 6) Kamencové Lake - [https://commons.wikimedia.org/wiki/File:Kamencov%C3%A9_jezero_\(Alaunsee\).jpg](https://commons.wikimedia.org/wiki/File:Kamencov%C3%A9_jezero_(Alaunsee).jpg)
- 7) Lake Laka - https://upload.wikimedia.org/wikipedia/commons/1/12/Jezero_Laka_-_Lake_Laka_%2802%29.JPG
- 8) Lake Mácha - https://upload.wikimedia.org/wikipedia/commons/e/e3/Staré_Splavy%2C_v%C3%BDhled_na_M%C3%A1chovo_jezero_%2804%29.jpg
- 9) Lipno - https://upload.wikimedia.org/wikipedia/commons/9/96/Stezka_koronami_strom%C3%BD. Lipno_nad_Vltavou._%2814%29.jpg
- 10) Lučina - <https://mapy.cz/zakladni?x=12.5691627&y=49.8082890&z=15&source=base&id=1930355&gallery=1;>
author Jakub Sklenář
- 11) Medard Lake - [https://commons.wikimedia.org/wiki/File:Jezero_Medard_\(7\).jpg](https://commons.wikimedia.org/wiki/File:Jezero_Medard_(7).jpg)
- 12) Most Lake - https://upload.wikimedia.org/wikipedia/commons/f/f2/19.8.12_Hnevin_Mostecke_jezero.JPG
- 13) Nechanice - https://upload.wikimedia.org/wikipedia/commons/c/cd/VD_Nechanice_-_v%C3%BD%C3%A7ov%C3%BD_objekt.jpg
- 14) Nové Mlýny - <https://pixabay.com/cs/photos/lake-water-pond-nove-mlyny-3905483/>
- 15) Nýrsko - <https://pixabay.com/cs/photos/n%C3%BDrsko-%28p%C5%99ehrada-%28Desk%C3%A1-republika-1450408/>
- 16) Orlík - https://upload.wikimedia.org/wikipedia/commons/a/aa/Orlík_7.jpg
- 17) Rozkoš - https://upload.wikimedia.org/wikipedia/commons/6/6e/Rozkoš_from_air_3.jpg
- 18) Rožmberk - [https://commons.wikimedia.org/wiki/File:Ro%C3%BDmberk,%28Lu%C5%BEnice_3_\(%28ebo%28\),_T%28ebo%28\).jpg](https://commons.wikimedia.org/wiki/File:Ro%C3%BDmberk,%28Lu%C5%BEnice_3_(%28ebo%28),_T%28ebo%28).jpg)
- 19) Slapy - [https://commons.wikimedia.org/wiki/File:Vodn%C3%A1dr%C5%BE_Slapy_\(001\).jpg](https://commons.wikimedia.org/wiki/File:Vodn%C3%A1dr%C5%BE_Slapy_(001).jpg)
- 20) Slezská Harta - <https://pixabay.com/cs/photos/p%C5%99ehrada-jezero-pa%C5%99ez-slezsk%C3%A1-harta-433120/>
- 21) Švihov - <https://pixabay.com/photos/%C3%BDvihov-castle-middle-ages-sights-1927710/> ;
https://commons.wikimedia.org/wiki/File:Vodn%C3%A1dr%C5%BE_%28vihov_550.jpg
- 22) Vranov - <https://pixabay.com/cs/photos/vranovsk%C3%A1-p%C5%99ehrada-b%C3%ADtov-horka-1232180/>

Towns, cities and castles

- 1) Beroun - https://upload.wikimedia.org/wikipedia/commons/9/9d/Beroun%2C_D%C3%A9d%2C_pohled_na_m%C3%A9sto.jpg
- 2) Brno - <https://pixabay.com/cs/photos/brno-cz-%28Desk%C3%A1-republika-morava-3430036/>
- 3) Břeclav - https://upload.wikimedia.org/wikipedia/commons/9/9a/Pohansko_02.jpg
- 4) České Budějovice - https://upload.wikimedia.org/wikipedia/commons/c/c2/%C3%BDesk%C3%A9_Bud%C3%A9jovice_Square.jpg
- 5) Český Krumlov - <https://pixabay.com/cs/photos/%28Desk%C3%BD-krumlov-%28Dechy-%28En%28-Dechy-3557917/>
- 6) Děčín - <https://upload.wikimedia.org/wikipedia/commons/6/6c/Decin.JPG>
- 7) Františkovy Lázně - <https://pixabay.com/cs/photos/franti%C3%A1ek-socha-franti%C3%A1kovy-%28zn%28-1464285/>
- 8) Hluboká nad Vltavou - https://upload.wikimedia.org/wikipedia/commons/e/eb/Hlubok%C3%A1_nad_Vltavou%2C_z%C3%A1mek%2C_oran%C3%BDrie_%2801%29.jpg

- 9) Havlíčkův Brod - https://commons.wikimedia.org/wiki/File:Havl%C3%AD%C4%8Dk%C5%AFv_Brod,_straatzicht_Havl%C3%AD%C4%8Dkovo_N%C3%A1m%C4%9Bst%C3%AD_IMG_6513_2018-08-03_13.28.jpg
- 10) Hradec Králové - [https://upload.wikimedia.org/wikipedia/commons/0/0e/Hradec Králové%2C Velké náměstí z Bílé věže.jpg](https://upload.wikimedia.org/wikipedia/commons/0/0e/Hradec_Kr%C3%A1lov%C3%A9_Velk%C3%A9_n%C3%A1m%C3%A9st%C3%AD_z_B%C3%ADl%C3%A9_v%C3%A9%C5%BE%C5%BE.jpg)
- 11) Hřensko - <https://pixabay.com/cs/photos/sout%C4%9Bsky-v-h%C5%99ensko-55969/>
- 12) Chomutov - https://upload.wikimedia.org/wikipedia/commons/8/8d/Chomutov_square.jpg
- 13) Jablonec nad Nisou - <https://upload.wikimedia.org/wikipedia/commons/2/29/Jablonec-Gablonz-Rathaus-1.jpg>
- 14) Jihlava - <https://upload.wikimedia.org/wikipedia/commons/3/3e/Iglau-Jesuitenkirche-Rathaus2.jpg>
- 15) Karlovy Vary - https://commons.wikimedia.org/wiki/File:V%C5%99%C3%ADdlo_003.JPG
- 16) Kašperk - <https://pixabay.com/sk/photos/ka%C5%A1perk-hrady-%C4%8Desk%C3%A1-republika-3782385/>
- 17) Kašperské Hory - [https://upload.wikimedia.org/wikipedia/commons/b/b8/Kašperské Hory od Liščího vrchu.jpg](https://upload.wikimedia.org/wikipedia/commons/b/b8/Ka%C5%A1persk%C3%A9_Hory_od_Li%C5%A1%C3%A7%C3%ADho_vrchu.jpg)
- 18) Klatovy - https://cs.m.wikipedia.org/wiki/Soubor:Cerna_vez_Klatovy_02.JPG; author Jik jik
- 19) Mariánské Lázně - https://cs.m.wikipedia.org/wiki/Soubor:Kolonnade_Eingang_Marianske_Lazne.jpg
- 20) Mělník - [https://upload.wikimedia.org/wikipedia/commons/5/50/Mělník náměstí s radnicí.JPG](https://upload.wikimedia.org/wikipedia/commons/5/50/M%C3%A9ln%C3%ADk_n%C3%A1m%C3%A9st%C3%AD_s_radnic%C3%AD.jpg)
- 21) Opava - [https://upload.wikimedia.org/wikipedia/commons/9/98/Opava Horní náměstí.jpg](https://upload.wikimedia.org/wikipedia/commons/9/98/Opava_Horn%C3%AD_n%C3%A1m%C3%A9st%C3%AD.jpg)
- 22) Ostrava - [https://upload.wikimedia.org/wikipedia/commons/a/a4/Masarykova náměstí Ostrava 2009.JPG](https://upload.wikimedia.org/wikipedia/commons/a/a4/Masarykova_n%C3%A1m%C3%A9st%C3%AD_Ostrava_2009.JPG)
- 23) Pardubice - [https://upload.wikimedia.org/wikipedia/commons/a/a5/Pardubice%2C Pernštýnské náměstí.jpg](https://upload.wikimedia.org/wikipedia/commons/a/a5/Pardubice%2C_Pern%C5%A1t%C3%ADnsk%C3%A9_n%C3%A1m%C3%A9st%C3%AD.jpg)
- 24) Písek - [https://upload.wikimedia.org/wikipedia/commons/4/42/Písek%2C Kamenný most a nábřeží.JPG](https://upload.wikimedia.org/wikipedia/commons/4/42/P%C3%ADsek%2C_Kamenn%C3%AD_most_a_n%C3%A1b%C3%A9%C5%BE%C5%BE.JPG)
- 25) Plzeň - https://cs.wikipedia.org/wiki/Soubor:Plze%C5%88,_katedr%C3%A1la_sv._Bartolom%C4%9Bje.jpg
- 26) Poděbrady - [https://upload.wikimedia.org/wikipedia/commons/f/f7/Zámek Poděbrady.jpg](https://upload.wikimedia.org/wikipedia/commons/f/f7/Z%C3%A1mek_Pod%C3%A9brady.jpg)
- 27) Praha - <https://pixabay.com/cs/photos/praha-karl%C5%AFv-most-n%C3%BDt-architektura-4313160/>
- 28) Přimda – own photo
- 29) Rožnov pod Radhoštěm - <https://commons.wikimedia.org/wiki/File:Radho%C5%A1%C5%A5-Radegast2013c.jpg>
- 30) Stříbro - [https://commons.wikimedia.org/wiki/File:Stribro_\(6\).jpg](https://commons.wikimedia.org/wiki/File:Stribro_(6).jpg)
- 31) Sušice - <https://cs.wikipedia.org/wiki/Soubor:Su%C5%A1ice-radnice.jpg> ; author Nissan0
- 32) Tábor - [https://upload.wikimedia.org/wikipedia/commons/b/b3/Tabor CZ aerial old town from north B1.jpg](https://upload.wikimedia.org/wikipedia/commons/b/b3/Tabor_CZ_aerial_old_town_from_north_B1.jpg)
- 33) Třebíč - <https://pixabay.com/cs/photos/%C4%8Desk%C3%A1-republika-t%C5%99eb%C3%AD%C4%8D-czech-unesco-3304032/>
- 34) Uherské Hradiště - [https://upload.wikimedia.org/wikipedia/commons/8/88/Klášter cisterciáků %28Velehrad%29 1.jpg](https://upload.wikimedia.org/wikipedia/commons/8/88/Kl%C3%A1%C5%A1%C5%A1ter_cisterci%C3%A1k%C3%AD_%28Velehrad%29_1.jpg)
- 35) Ústí nad Labem - https://www.flickr.com/photos/widnes_road/29705201687
- 36) Valšské Meziříčí - [https://upload.wikimedia.org/wikipedia/commons/8/8e/Valašské Meziříčí%2C Náměstí.jpg](https://upload.wikimedia.org/wikipedia/commons/8/8e/Vala%C5%A5sk%C3%A9_Mezi%C3%AD%C3%AD%C3%AD%C3%AD_N%C3%A1m%C3%A9st%C3%AD.jpg)
- 37) Vsetín - [https://cs.wikipedia.org/wiki/Soubor:Kostel evangelick%C3%BD_\(Vset%C3%ADn\).JPG](https://cs.wikipedia.org/wiki/Soubor:Kostel_evangelick%C3%BD_(Vset%C3%ADn).JPG)
- 38) Znojmo - <https://pixabay.com/cs/photos/znojmo-morava-kultura-4142740/>
- 39) Žďár nad Sázavou - <https://pixabay.com/cs/photos/kostel-santini-unesco-hv%C4%9Bzda-2712155/>