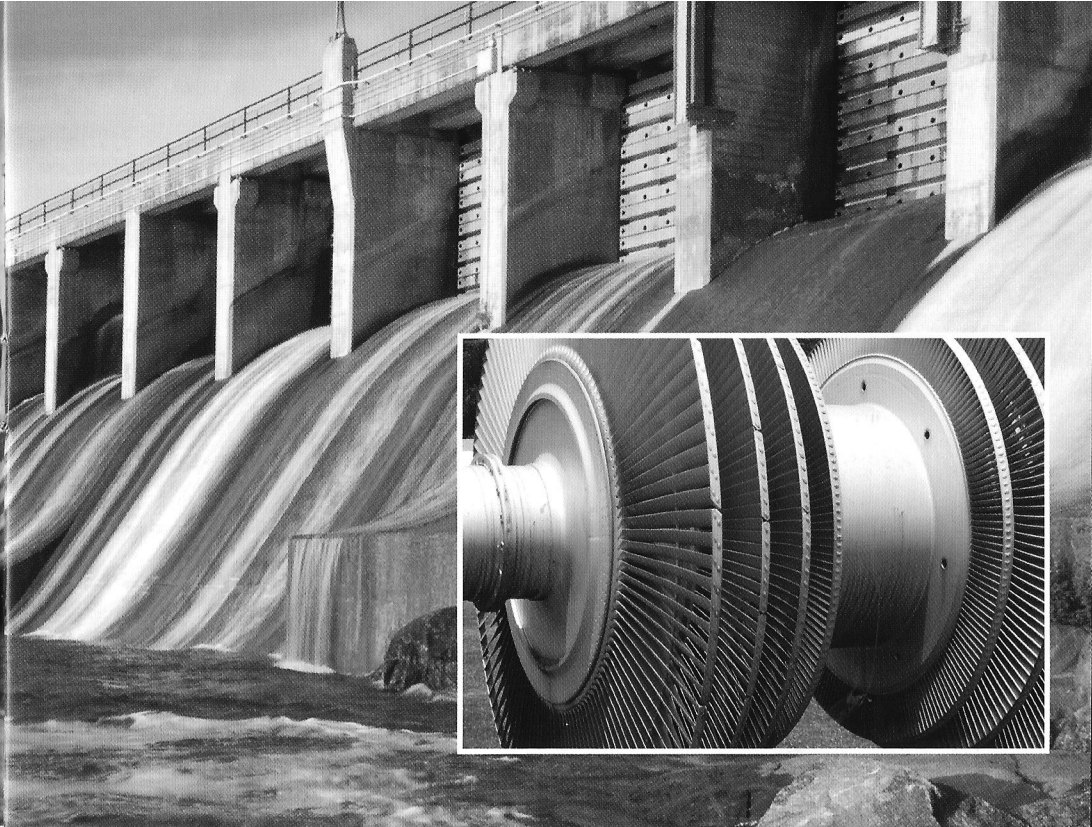
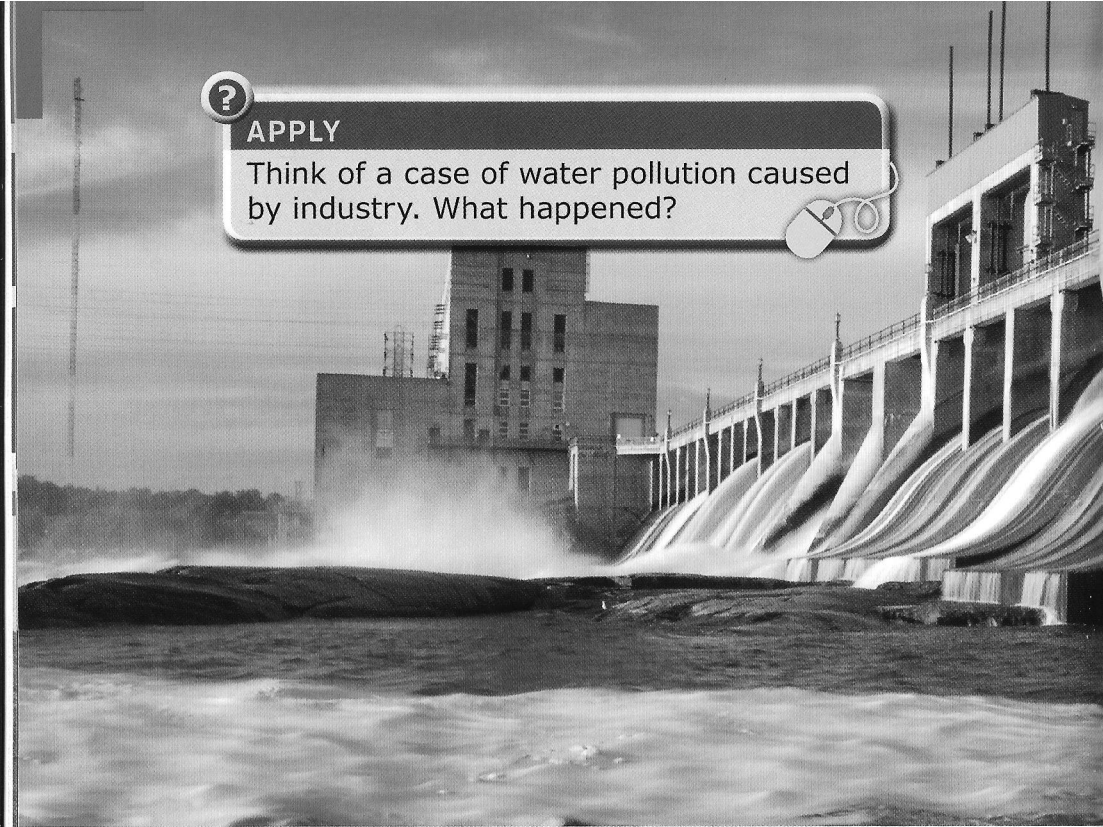




APPLY

Think of a case of water pollution caused by industry. What happened?



Water is also used to move things where they need to go. Trees are cut down and floated along rivers from faraway forests, for example. It would be hard, in fact, for trade to exist without water as a means of transportation.

Shipping is a huge industry that helps us move the things we make around the world as cheaply as possible. And water is also used to transport waste – including human waste! – to waste-treatment facilities, where it is diluted,⁴ broken down, and dealt with safely.

⁴**dilute:** make a liquid thinner by adding another liquid to it, such as water

Water is also used to create the power we need to keep our industries running. Hydroelectric generating⁵ plants use the energy of falling water to turn turbines, which then create electricity. This electricity is taken to cities and towns along power lines.

Without water, most industrial work would be more dangerous, more expensive, and, in some cases, impossible. But there are problems. For example, industrial processes may cause pollution. Dangerous chemicals can pollute the water, harm people, and damage the environment.

⁵**generate:** make energy