



Electric ⚡ Eco Bikes

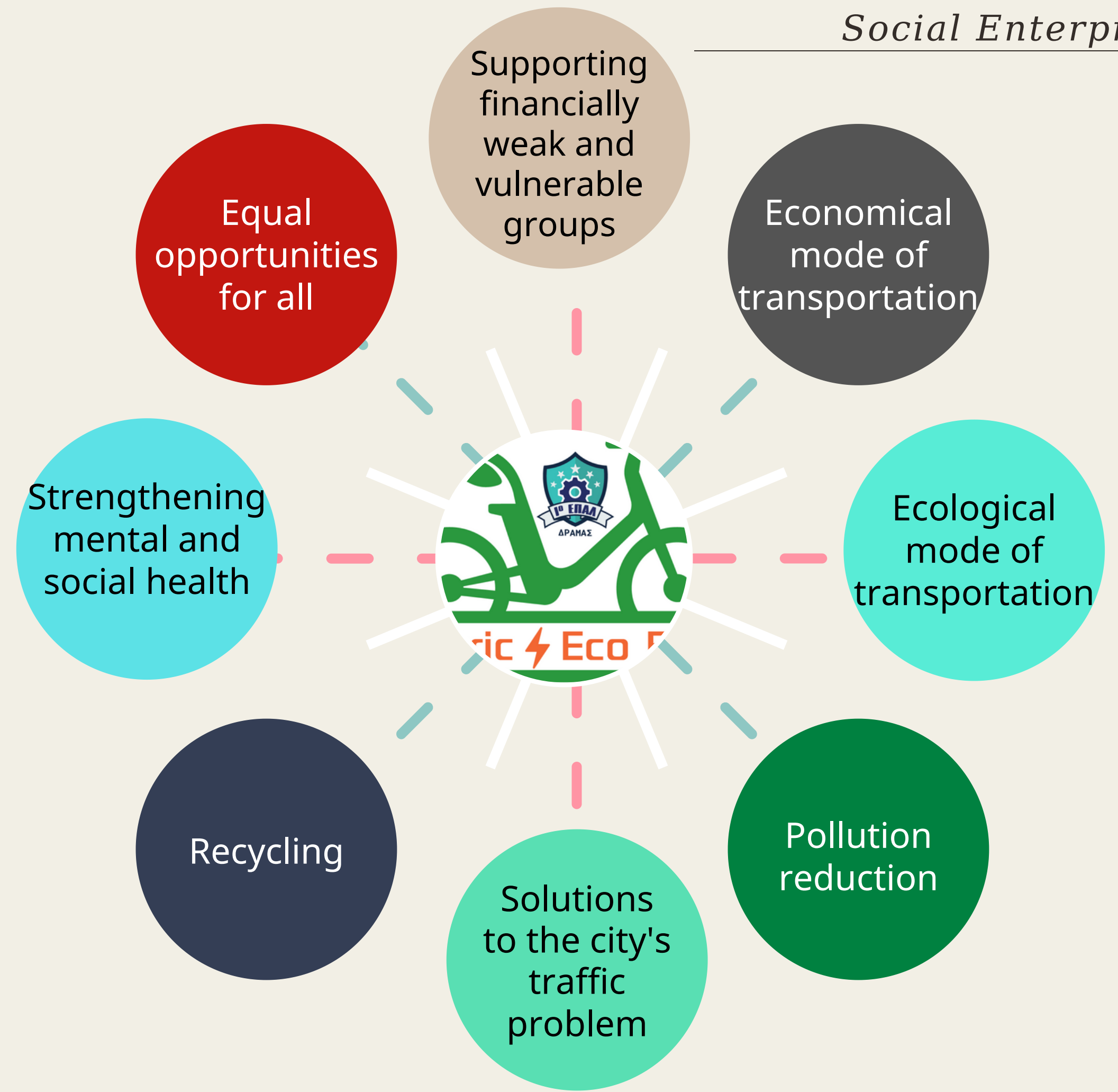
Social Enterprise

The characteristics of the enterprise

Social Enterprise



Social,
Environmental,
Financial
Footprint



*Additional ...
targets*



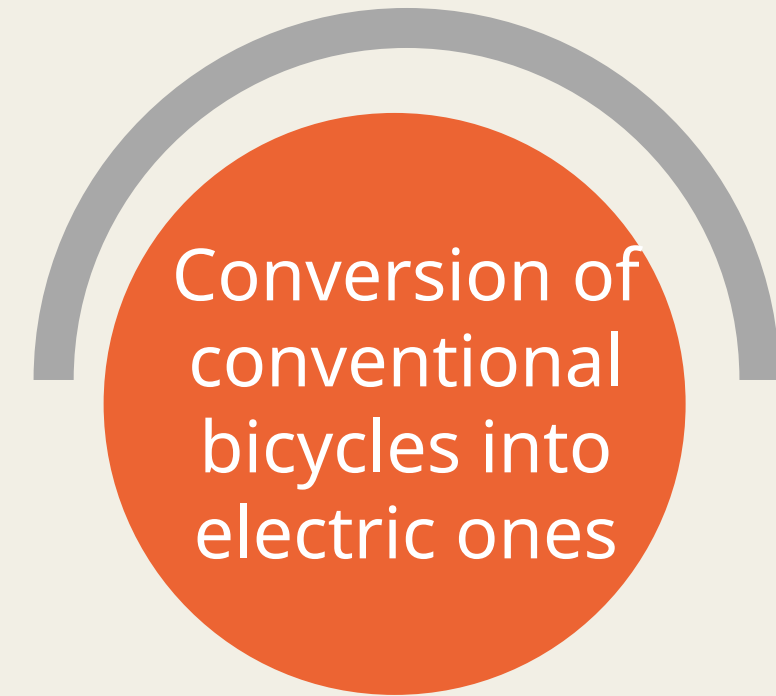
Job positions creation

Dissemination of the use of bicycles

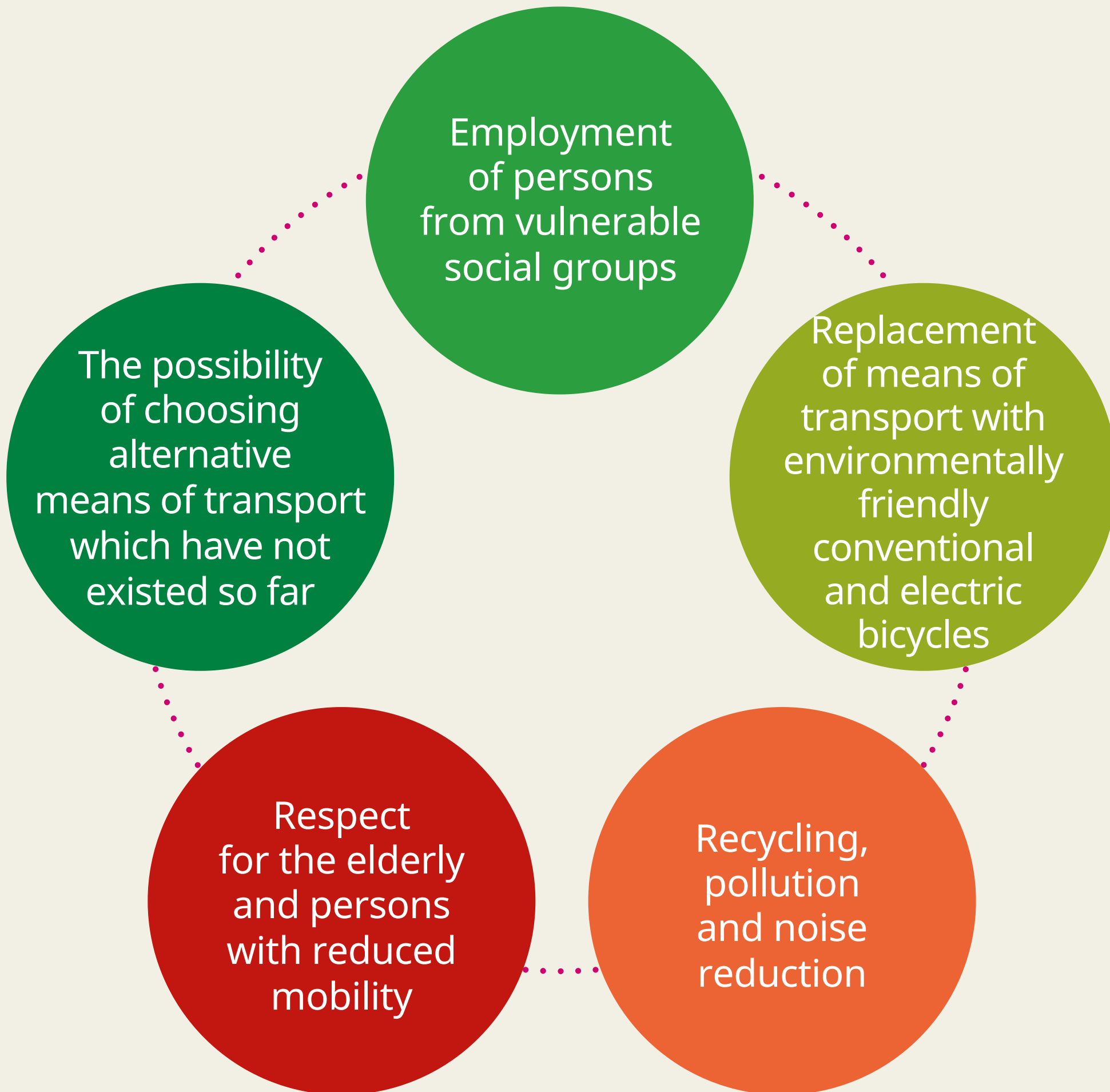
Multiple use by the elderly or people with special needs

Skills cultivation

Products
Services



Added value



Business opportunity



Lack of competition



Targeting a large group of population

- low income
- vulnerable groups
- the elderly
- people with special needs
- with ecological and environmental awareness
- who like sports



Circular economy, responsive to society

Beneficiaries





Electric ⚡ Eco Bikes

Social Enterprise

Thank you!

