

I evaluate what I learned

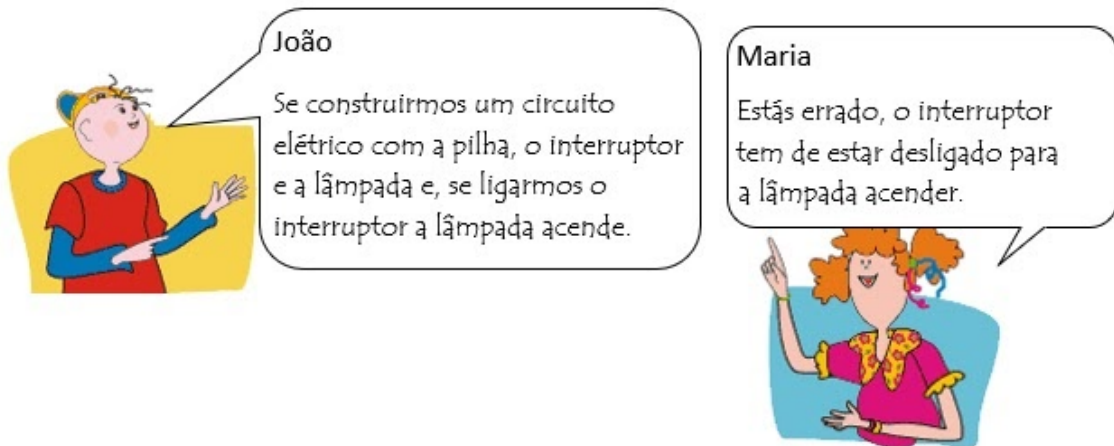
10th year / 4th year articulation - electrical circuits

***Obrigatório**

1. Endereço de email *

Group I

2. Which student do you agree with? João: If we build an electrical circuit with the battery, the switch and the light bulb, and if we switch on the switch, the lightbulb will light up. Maria: You're wrong. The switch must be off for the light bulb to come on. *
- 10 pontos



Marcar apenas uma oval.

- João
- Maria

3. Fill up the table below using a cross. *

20 pontos

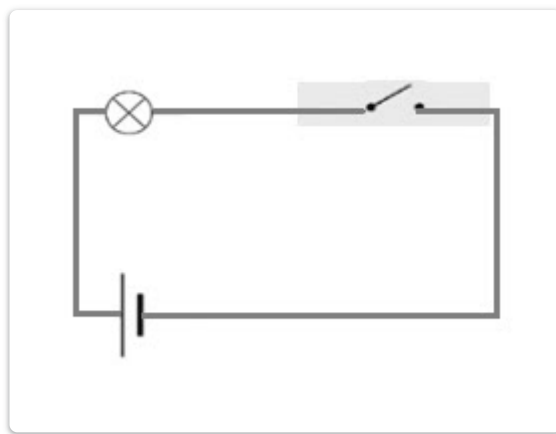
Marcar tudo o que for aplicável.

	Switch on	Switch off	Light Bulb turns on	Light bulb does not turn on
Closed circuit	<input type="checkbox"/>	<input type="checkbox"/>	<input type="checkbox"/>	<input type="checkbox"/>
Open circuit	<input type="checkbox"/>	<input type="checkbox"/>	<input type="checkbox"/>	<input type="checkbox"/>

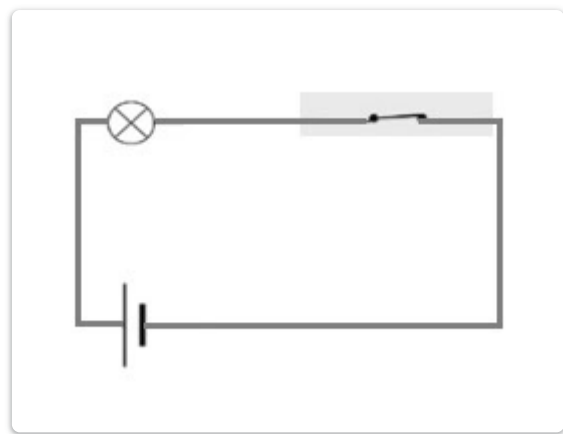
4. Which of the schemes allowed you to turn on the light bulb? *

10 pontos

Marcar apenas uma oval.



Scheme 1



Scheme 2

Grupo II

In electrical circuits the light bulbs can be connected in series or in parallel. Consider figures 1 and 2.

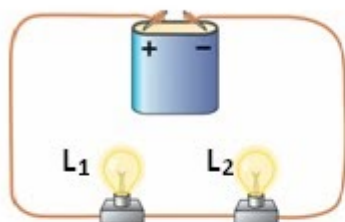


Figura 1

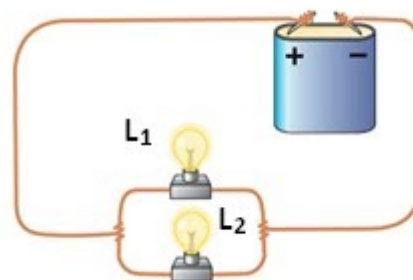


Figura 2

5. Selecciona a alternativa correta. *

10 pontos

Marcar apenas uma oval.

- In figure 1 the light bulbs are connected in parallel.
- In figure 2 the light bulbs are connected in parallel.
- In figure 2 the light bulbs are connected in series.
- In figures 1 and 2 the light bulbs are connected in parallel.

6. If the L1 light bulb is unscrewed... *

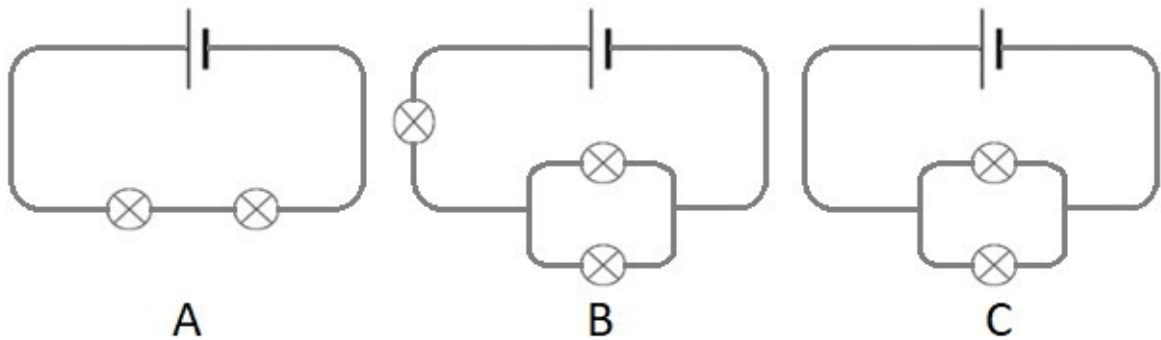
10 pontos

Marcar tudo o que for aplicável.

- ... In figure 1, the L2 light bulb does not light up.
- ... In figure 2, the L2 light bulb comes on.
- ... In figures 1 and 2 the L2 light bulb comes on.
- ... In figure 1 the L2 light bulb comes on

7. Matches each type of circuit to diagrams A, B or C. *

30 pontos



Marcar apenas uma oval por linha.

	A	B	C
Parallel circuit	<input type="radio"/>	<input type="radio"/>	<input type="radio"/>
Series circuit	<input type="radio"/>	<input type="radio"/>	<input type="radio"/>
Mixed circuit	<input type="radio"/>	<input type="radio"/>	<input type="radio"/>

8. In our homes, is it more advantageous if the light bulbs are connected in series or in parallel? * 10 pontos

Marcar apenas uma oval.

In parallel.

In series.

Este conteúdo não foi criado nem aprovado pela Google.

Google Formulários