

VIRTUAL VISIT TO POLAND

- screen shots from Finland

DAY 1- January 26th 2021

The Polish school



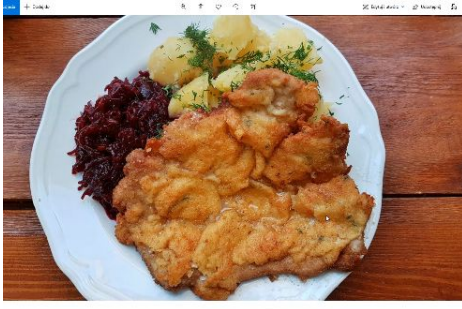
Students visiting Poland



Polish dumplings / pierogi



Polish schnitzel /kotlet schabowy



Bigos



Chelm



Hello! Dzień Dobry /Cześć

Secondary school includes:

- * 4-year general secondary school (15-19 years old)
- * 5-year technical secondary school (15-20 years old)
- * first and second degree vocational school (15-19 years old)

Secondary school

High school students learn various subjects, including: Polish, English, mathematics, geography, chemistry, physics, computer science, biology and others.

In high school, students learn subjects that will be needed at the matura exam. The compulsory subjects are: Polish, English, mathematics. Additionally, students learn the subjects they want to extend.

High school

In high school, students prepare directly for the matriculation examination, which in order to pass, they must obtain 30% at the basic level.

How to get to school



Attention to the cross on the wall!



Teachers' room



School café



School cafe

Special training: fire service and military service



History/ geography class

Who borders Poland?

Poland borders 7 countries:



The largest lake in Poland:

The deepest lake in Poland:



The longest rivers in Poland:



Morze Bałtyckie- Baltic

Sea: Trivia:

1. Baltic states are Poland, Germany, Russia, Lithuania, Latvia, Denmark, Finland, Sweden and Estonia.
2. At some point the sea completely lost contact with the Atlantic Ocean, becoming a lake.
3. The Baltic Sea is one of the most polluted seas in the world.
4. In the Baltic sea live seals: grey seal, ringed nerpa or common seal.



The Battle of Grunwald



Nicolas Copernicus



DAY 2 - January 27th

In Polish there are 3 genders, 7 cases

PSZCZOŁA

SZCZĘŚCIE

PIĘCSET PIĘĆ

PIĘCSET PIĘĆ

Tongue Twisters:

- Stół z powyłamowanymi nogami.
- W czasie suszy szosa sucha.
- Król Karol kupił królowej Karolinie korale koloru koralowego
- W Szczebreszynie chrząszcz brzmi w trzcinie
- Jola lojalna, lojalna Jola

Król Karol kupił królowej
Karolinie korale koloru
koralowego.

Meaning: 'King Carol bought coral-coloured beads for Queen Caroline'

The troubling alternation between the trill R and approximant L is a classic humour inducer among many languages. (At least those that have a distinction between R and L – sorry, Japanese!) Also, note that the sentence is an example of a tautogram: all the words start with the same letter.

KOCHAM CIĘ

- Stół z powyłamowanymi nogami.
- W czasie suszy szosa sucha.
- Król Karol kupił królowej Karolinie korale koloru koralowego
- W Szczepreszynie chrząszcz brzmi w trzcinie
- Jola lojalna, lojalna Jola


Stół z powyłamowanymi nogami.



History-geography quizzes



What was the origin of the multinational (Finnish) telecommunications company called NOKIA?



rubber and cable factory telephone company

map shop radio company

Who is the number one Lithuania's export partner?



United States Estonia

Russia Poland

New history-geography Kahoot questions:

<https://create.kahoot.it/share/history-and-geography-quiz-intermediate/0221f809-714b-4bb0-b41f-b25b82197ad7>

The town of Chelm



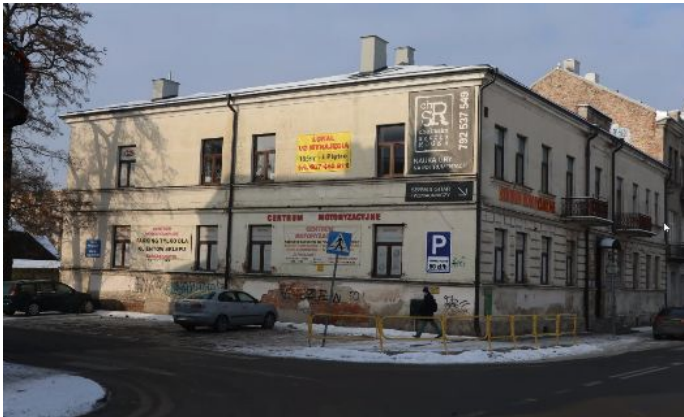




Polish music - Aya RI

<https://www.youtube.com/watch?v=1cFzJUX99Ck>

Online visit to a local museum







Online visite to the old chalk mine



TRASA TURYSTYCZNA

Wejście do podziemi znajduje się w skarpię poniżej kościoła p.w. Rozesłania św. Apostołów przy ul. Lubelskiej 55a.



1994 rok
wpisana do rejestru zabytków

2000 m
długość trasy

Kolej turystów w 2019 r.
Kolej turystów w 2018 r.

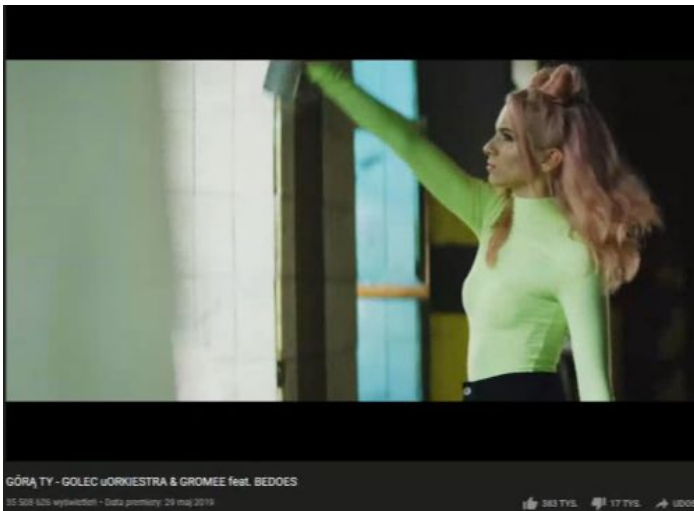
4433 turystów
w 2019 roku

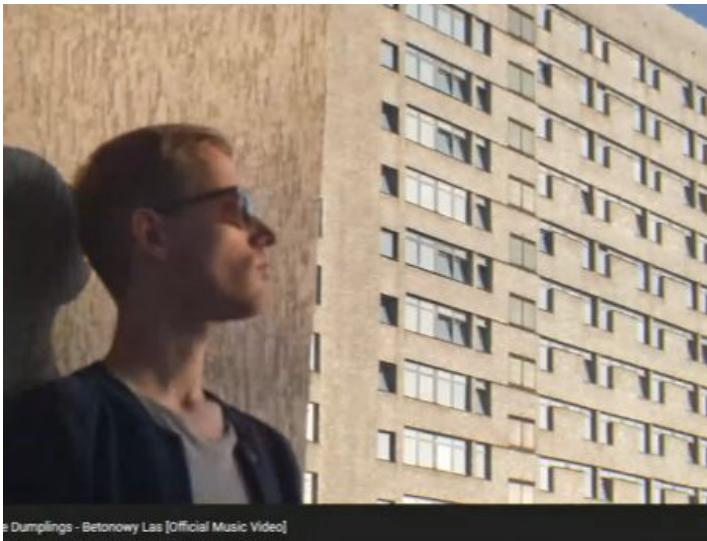


The prom / old dances Polish style

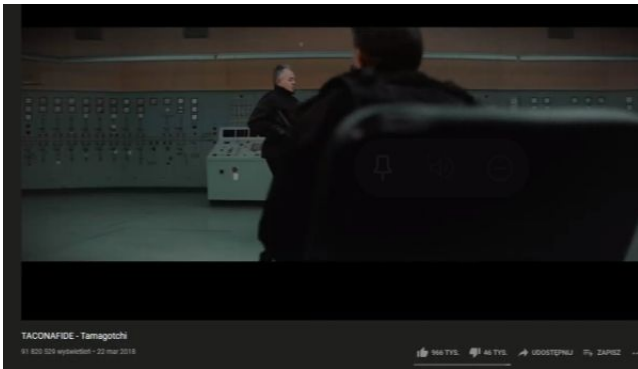


Polish music





Dumplings - Betonowy Las [Official Music Video]



TACONAFIDE - Tamagotchi

91 833 wyświetleń · 22 mar 2018

👍 964 tys. 🗨️ 46 tys. ➡️ OŚWIETLIŁY 🔒 ZAPISZ

DAY 3 - January 28th



Polish pancakes eaten with cottage cheese



Homemade sausages





The world's thinnest house

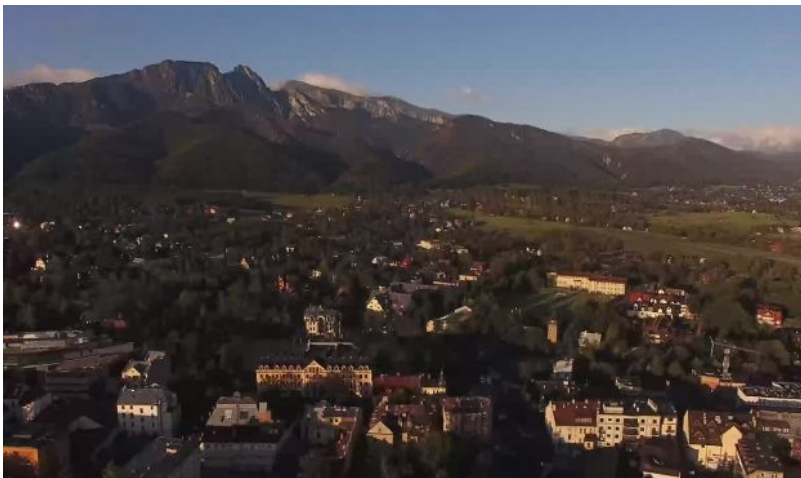




Warsaw



Sopot, next to Gdansk



1. Old town in Zamość

The old town in Zamość is one of the few cities with an architectural and urban complex, it is a Polish gem entered on the UNESCO list in 1992. The city plan was made according to the design of the Italian architect Bernardo Morando, it referred to the Italian cities. Until modern times, it has been preserved in an almost unchanged form.



2. Castle in Kazimierz Dolny

Although Kazimierz Dolny is a small town, thanks to its rich history, it is rich in numerous interesting monuments of sacred and secular architecture. One of them is this castle in Kazimierz Dolnym

The ruins of the castle are in excellent condition, which makes it even more pleasing that the fortress dates back to the 14th century. You can walk to the castle from the market square, it only takes 5 minutes. The ruins and the observation tower from which you can admire the entire panorama of Kazimierz Dolny are open to visitors all year round.



3. Majdanek State Museum

The State Museum at Majdanek - German Nazi Concentration and Extermination Camp (1941-1944) - it is a martyrdom museum established in 1944 on the site of the former Nazi concentration camp. It is an institution directly subordinate to the Ministry of Culture and National Heritage.



4. Monument to the Union of Lublin

It commemorates the union of the Crown of the Polish Kingdom with the Grand of Lithuania concluded in Lublin on July 1, 1569. The monument was erected in the place where the nobility arrived at the Seym and where the deliberations took place, opposite the present church and monastery of the Capuchins. It is one of the three Lublin sites recognized in March 2007 by the European Union as a symbol of European heritage.



5. The UMCS Botanic Garden in Lublin

The garden is unique with numerous and colorful flowers as well as exotic plants.

The garden's collections include over 1,600 species of trees and shrubs, over 3,300 herbaceous plants growing in the ground and approx. 1,600 species of greenhouse plants. 106 trees over 100 years old grow in the park.



6. Krasnobród

Krasnobród is a holiday resort, and recently also a health resort. There are rich brine springs here.

The town is situated in the picturesque Wieprz valley. Krasnobród is very often called Częstochowa in Roztocze, because it is famous for the Marian Sanctuary, numerous chapels and miraculous springs.



7. Educational Trail “Czahary”

The Bubnów swamp is an ideal place for many species of wetland birds. You can meet here: common snipe, curlew, black-tailed godwit, spotted eagle and marsh harrier. It is also a great place for cranes. Their autumn concentrations in Bagno Bubnów are among the largest in the region. Over 3,000 individuals can gather here on the so-called night shelters.

Not only bird lovers will find something for themselves here. The path leads through forest, meadow and peatland ecosystems, each of them representing different, specific species of plants and animals. It will be possible to meet elk, roe deer, and during the rutting season also deer.

There are 5 stops on the route with a total length of 6.5 km.



8. Oak Bolko

It is a pedunculate oak which, according to measurements from 1992, sprouted around 1370, i.e. in 2018, is about 650 years old. A nature monument protected since 1959, growing in a post-farm park in the village of Hniszów in the Ruda-Huta commune (Lublin Province).

Its circumference is 870 cm, which places it among the largest oaks in Poland, and the height is 29 m. In order to stabilize the tree, conservation treatments are performed on it - sanitary cuts, and the crown is stabilized by dynamic bonds.

The Bolko Oak has an exceptionally impressive crown measuring 34x30m.

According to legend, Boleslaw I Chrobry was supposed to rest under the tree during his expedition to Kiev, however, it is impossible, as the age of the oak was estimated at around 650 years.



9. Tower in the bergfried

Daniel Halicki, the duke of Halych-Volhynia, having settled in Chelm, wishing to strengthen the city and make it more defensive, built a tower near it, from which one could see the vicinity of Chelm, it was to be a watchtower, the so-called a warning device that guarded the approach to the prince's castle (located on High Hill in Chelm), preventing the enemy from unexpectedly approaching the city.



10. Chalk underground

It is a historic chalk mine that is a unique remnant of the chalk mining industry in Europe. The multi-level complex of corridors and chambers located in it was created as a result of centuries of exploitation of writing chalk, the deposits of which are located under the surface of the city.

The temperature in the basement is constant, regardless of the weather outside, and it amounts to +9 ° C. Whereas the humidity varies between 70-85%.

The tourist route is approx. 2 km long and is located under the central part of the old town. On its trail, you can see an exhibition on archeology, chalk mining and the history of the city, come across bats and meet the ruler of the underworld - the spirit of Bieluch.



10a. Ghost Bieluch

Legendary guardian of the Chalk Undergrounds in Chełm, guardian of the treasures hidden there. According to legend, he is the ghost of a white bear on the coat of arms of Chełm.

You can meet him during the tour in one of the underground chambers. He emerges from the darkness and then tells of how he frightened thieves and treasure hunters. At the end of his stories, he promises to fulfill one wish made in the dark with his hand placed on the chalk wall in the Chamber of Requirements.



11. Lublin Village Museum

The Lublin Village Museum in Lublin has been entered into the State Museum Register. The purpose of this museum is to collect historical monuments of brick, ethnographic and wooden architecture. Some of the most interesting objects of this museum are: a parish granary, a beer house, a blacksmith's shop, an Orthodox church with a belfry, an oak trunk with a cross, a manor house, a fourfold, a church with a belfry. An interesting attraction of this place is also the possibility of sailing on the pond in the Powiśle sector with old vessels, such as a whip or ferry.



12. The District of Wooden Houses Borek in Zwierzyniec

Passing through Zwierzyniec, you can visit the Borek Wooden House District. This district was established in the early 1920s. There are about 70 houses in the complex that are very similar to each other. The houses are preserved in a very good condition, they are an interesting image of the architecture of the interwar period.



13. Museum of Unusual Bicycles in Gołębia

An interesting tourist attraction of the Lublin Province is the Museum of Unusual Bicycles in Gołębia. It is the only museum of this kind in Poland and in Europe, therefore it is a unique attraction. The museum houses numerous recumbent, circus, children's and adult bikes. Children and adults can use bicycles, parents can also ride their children with special rickshaws. The museum also organizes lessons for children and teenagers of all ages. The subject of the lesson is related to the history of bicycles, ecology, and caring for bicycle equipment.



14. Nałęczów

It is one of the most famous health resorts in Poland. The heyday of this place falls in the second half of the nineteenth century, when it was visited by many famous artists, incl. Stefan Żeromski or Bolesław Prus.

In Nałęczów, with the help of the local microclimate favoring lowering blood pressure, they are treated, among others, by arterial hypertension or coronary artery disease.



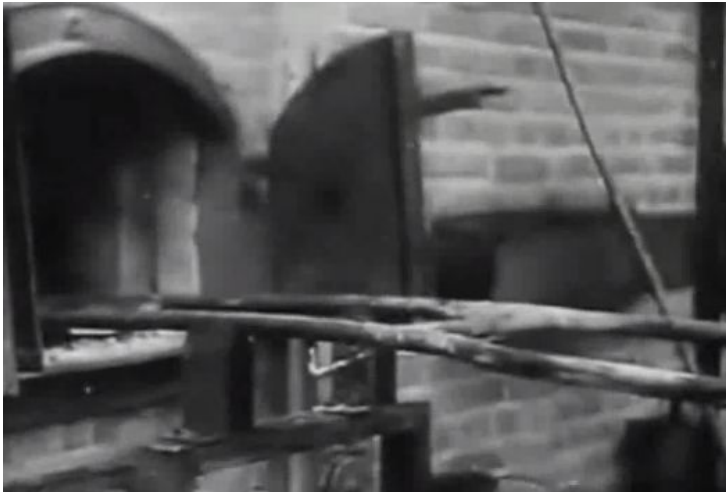
15. Zamoyski Palace in Kozłówka

Kozłówka is a quiet village in the northern part of the Lublin Province, it became famous thanks to the Palace and Park Complex of the Zamoyski family. This extraordinary building, surrounded by a large garden, was built in the 18th century according to the design of the Italian architect Joseph II Fontana.



STATE MUSEUM AT MAJDANEK

THE NAZI GERMAN CONCENTRATION AND EXTERMINATION CAMP (1941–1944)

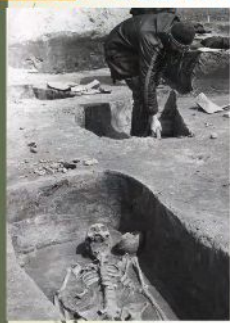




Goth village



JAK TO SIĘ ZACZEŁO...?
HOW IT BEGAN...?



POLAND

MASŁOMĘCZ

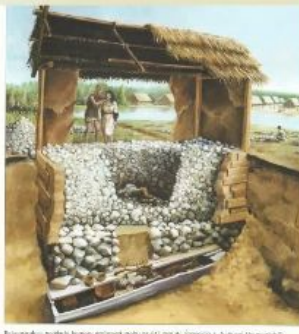


BADANIA ARCHEOLOGICZNE
W GM HRUBIESZÓW
ARCHAEOLOGICAL EXCAVATIONS in
Hrubieszów Commune

1978 – 2002
MASŁOMĘCZ
GRÓDEK
MOROCZYN ...

Prof. dr hab. Andrzej Kokowski
Institute of Archaeology UMCS Lublin

MIEDZYNARODOWA KARIERA GRUPY MASŁOMĘCKIEJ
INTERNATIONAL CAREER OF THE MASŁOMĘCZ GROUP



Rekonstrukcja wyglądu osady prehistorycznej (zdjęcie: prof. A. Zdanowicz, "Kultura Starożytności")



MIEDZYNARODOWA KARIERA GRUPY
MASŁOMĘCKIEJ
INTERNATIONAL CAREER OF THE
MASŁOMĘCZ GROUP



BIESIADA ARCHEOLOGICZNA (archaeological fest)

The Gothic group was officially presented to the public in the middle of 2008



The youngest - 4 years old, the eldest - 79 years old.

ANCIENT HERITAGE FESTIVALS & ANNUAL ARCHEOLOGICAL FESTS



WIOSKA GOTÓW DZIŚ – JEDEN Z POWODÓW DO DUMY
GOTHS' VILLAGE NOW – REASON TO BE PROUD OF



WIOSKA
GOTÓW
w MASŁOMECCZU



Watch this video about John Irving:



© Robert K. Coyle

Read this text carefully:

A gut feeling?

Emotions do not just occur in your mind; they also have a physical effect on your body. A group of scientists from Finland decided to find out which emotions affect which parts of the body. They asked 701 volunteers to colour in silhouettes in response to emotional words, stories and videos. The results show that the people generally experience emotions like anger, envy and shame in similar ways.

For example, when you're angry, you probably feel that anger mostly in your chest and head. But if you feel ashamed, you probably notice it in your face and, in particular, your cheeks. Depression makes your whole body feel less active, whereas happiness affects your whole body in a positive way.

Anger is felt mostly in your chest and head.



13



skip

25
Answers

True

False

Asking a librarian is a means to detect fake news.



4

Kahoot!

skip

31
Answers

True

False





..... habitez ici à Paris?

12

29 Answers

▲ Tu	◆ Vous
● Nous	■ Ils

7/20 kahoot.it Game PIN: 9607877

La Réunion est ...

9 4 18 0

Show media

▲ une montagne	✗	◆ une ville	✗
● une île	✓	■ un village	✗

End game

French Foreign Language Quiz - Beginner Level

SP_Rubén

1
16480
18 out of 20

Diego Espanha

3
15611
17 out of 20

SP_MIREIA

2
16189
18 out of 20

Runners-up

4 SP_Ang... **5** SP_yaiza

Next

European History Quiz - Intermediate Level

FR - Valentine

1
18208
20 out of 30

SP_Mariaa

3
17689
21 out of 30

SP_Rocío

2
18172
21 out of 30

If you are in Year 11 in the UK, what grade are in in the USA?

Skip

2

28
Answers

▲ Freshman (9th grade) ◆ Sophomore (10th grade)

● Junior (11th grade) ■ Senior (12th grade)

9/45 kahoot.it Game PIN: 388304

Poland

