

PUZZLE GAME

Content of the game :

2x5 piece for a puzzle

8 geometric figures

Purpose of the game:

This game is played with 2 players. Each player has 5 pieces of a puzzle.

There are 8 stages in this game. The 8 geometric figures are face down.

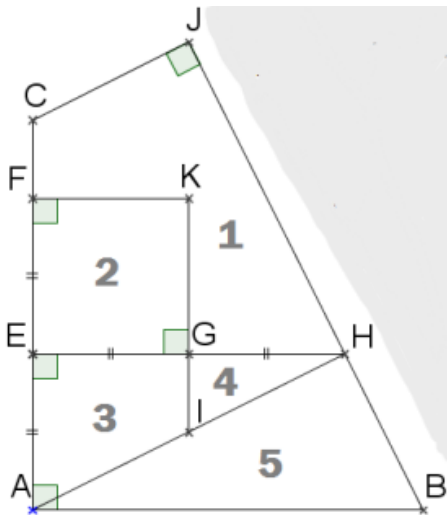
For each stage, we turn over a hidden face of a geometric figure.

The player who makes the geometric figure the fastest using the pieces of a puzzle wins 1 point.

The player who first gets 4 points wins.

Realization of the five pieces of the puzzle :

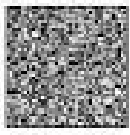
On a cardboard sheet,



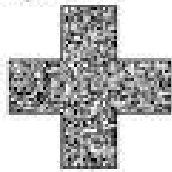
1. Construct two perpendicular rays $[AB]$ and $[AC]$. $AB = AC = 15$ cm.
2. On $[AC]$, place points E and F . $AE = EF = 6$ cm.
3. Draw the perpendicular to AE passing through E and place the points G and H on this line, on the same side as B . $EG = GH = 6$ cm.
4. Draw $[BH]$.
5. Draw perpendicular to $[BH]$ passing through C . it intersects $[BH]$ in J .
6. Draw $[AH]$.
7. Draw the line (d) perpendicular to AE passing through F .
8. Draw perpendicular to $[EH]$ passing through G who intersects $[AH]$ in I and (d) in K .
9. Erase the construction lines in order to keep only those of the model presented.

Paint piece 1 yellow, piece 2 blue, piece 3 purple, piece 4 green et piece 5 brown

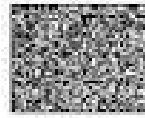
Figures to build :



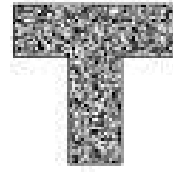
Square



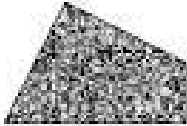
Cross



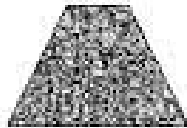
Rectangle



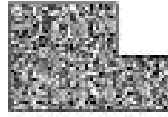
T



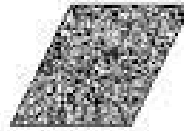
Quadrilateral



Trapeze



Two Squares



Rhombus