



MÂNZĂLEȘTI

Romania - Buzău

Mânzălești

- Buzău has a lot of areas that anyone who is passionate about geography must visit at least once in their lifetime. One of these would be Mânzălești.
- They said that in Mânzălești is so much salt that it could hold the whole Globe for decades. Here was the salt civilization, all the peoples used the salt that was on the surface but also in the depth, being easy to exploit.
- The legend of Meledic Lake

The mountain of salt

- Now, to be completely honest, we should point out that, in fact, this is not a mountain made up entirely out of salt. The mountain wears a light coat of dirt under which there are tons and tons of salt. Because of this, in this area, it seems to be always winter.
- The Meledic Plateau and everything around it is a protected area of national interest located in the Sub-Carpathians of Curvature, in the basin of the Slănic River. And lastly, the cherry on top is represented by the "Grunj", on the Meledic plateau. Seduced by the beauty of the area, Alexandru Vlahuță consecrated an entire chapter entitled "Meledic" in his work: "România pitorească", or "Picturesque Romania".



MeLedic Lake

- *The MeLedic Plateau in Mânzălești, Buzau County, is a storyland, shrouded in mystery. The hills around the plateau are clad in forests and pastures, only good to admire and photograph. In the area there are stories related to the lake in the middle of the plateau which is said to be bottomless or there would be a treasure. Even if the mysteries of the lake remain unraveled, one thing is certain: thousands of tourists make their way through the area every year.*

The Museum: "The Time of man"

- *In the life of the traditional man the days were hard and the expectations were low. Although the life of man is ending, the sings of his work remain, and the life continue.*
- The museum wants to highlight the old life of the traditional Romanian.



Photos from the museum



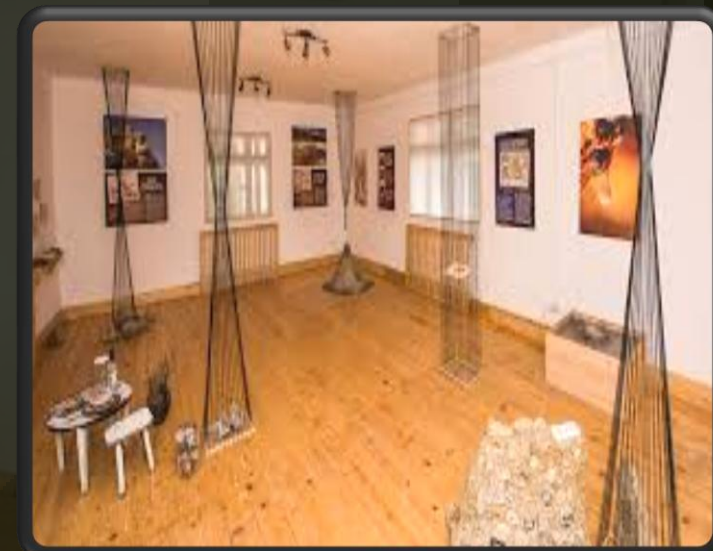
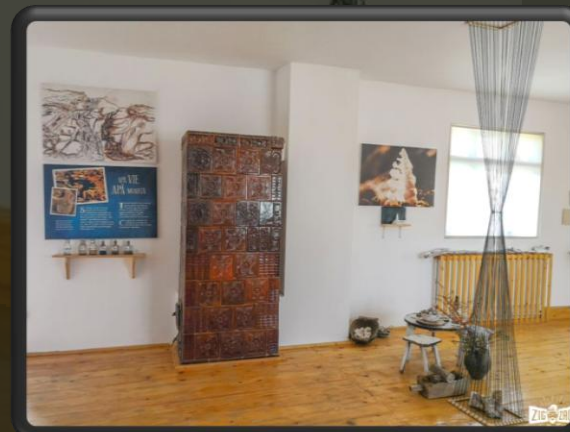
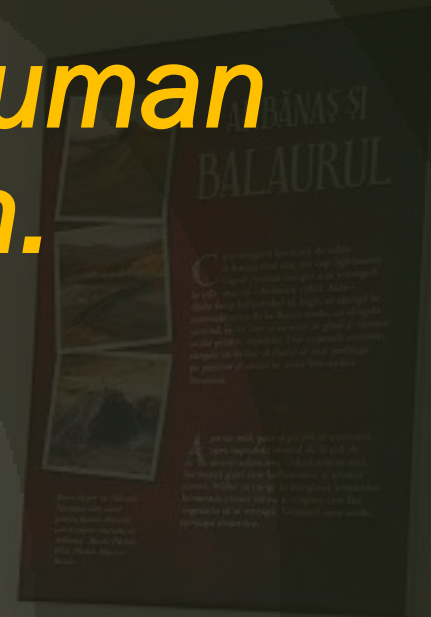
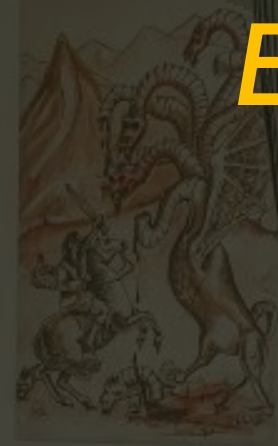
THE MUSEUM "SEVEN STORY PLACES"



This place will guide you on the path of human and earth story

The museum is located in Lopatari. Here you will have the opportunity to meet the 7 places in Buzau County. Over the years, these places inspired stories with ogres, giants,

The story of human and Earth.





HOTELS LOCATED IN MANZALESTI.

PENSIUNEA DINTRE PINI



Pensiunea Lacul Zanelor



Pensiunea Meledic



Erasmus+