

«The bedroom” find the differences game

The class will take a close look at Vincent’s van Gogh painting “The bedroom” and then find the differences in 5 modified versions.



When looking at paintings there are some tricks that you can use. For instance, you can draw imaginary lines on the painting. Can you see that Vincent made the bed so big that it's in both halves of the painting? That draws your attention to it right away. So does the colour.



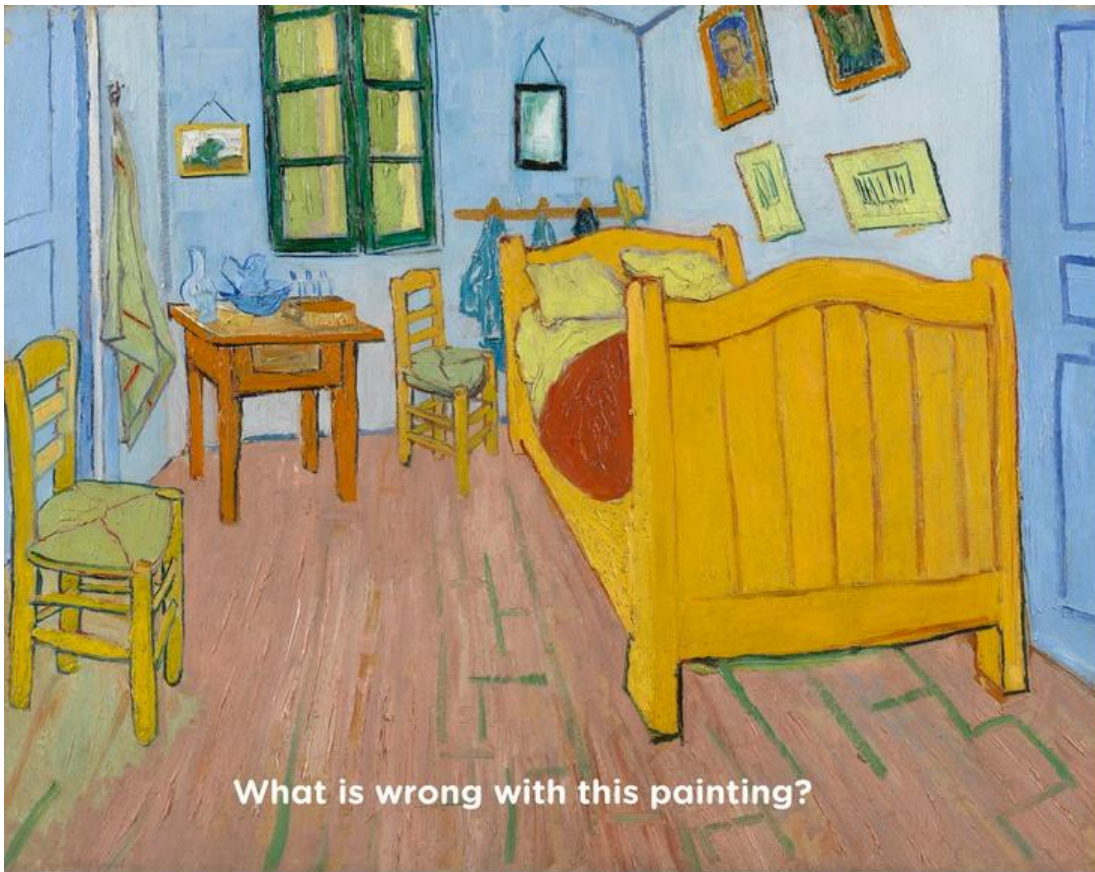
Now draw some other lines on the painting, or ask students to do it. Draw diagonal lines showing the direction of the walls, the bed frame, or the floorboards. The shape of the room doesn't look quite right, but in fact, it really did have a funny corner like that, and it wasn't a perfect rectangle.

Tell the class: when you "trace over" the painting with your eyes, you see more and more details. Ask students to describe some details of the painting. Then explain the assignment: After a certain number of seconds, the picture will disappear from the board. When it reappears, something about the painting will be different.



**Did you look closely?
Now find the
difference!**

To avoid confusion, every modified version is marked with the words "what is wrong with this painting"? You can ask the children to tell you their answers or circle the details on the whiteboard if used.

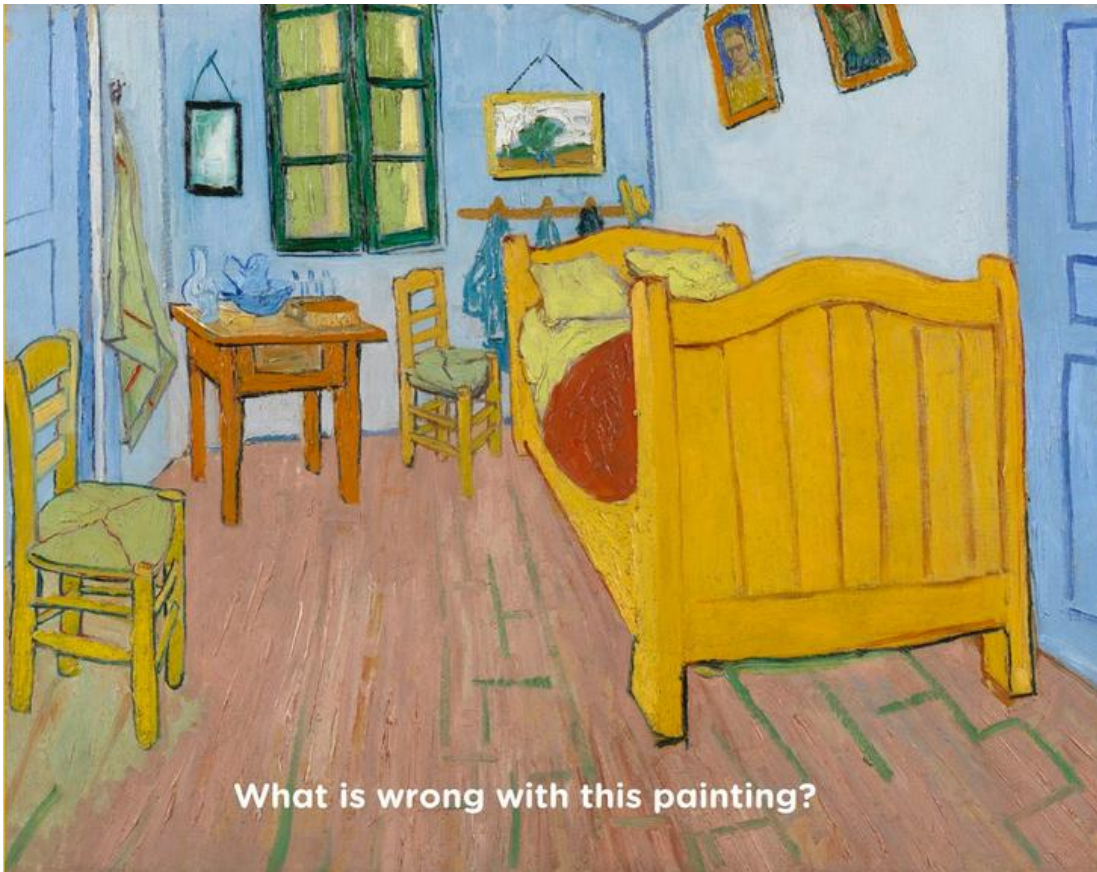


Answer: the mirror to the left of the window has been switched with the painting to the right of the window.

After every modified version, the original painting is shown again on the board. This will make it clear what was the different about the previous version. It also allows the class to take another look at the original in preparation for the next version.



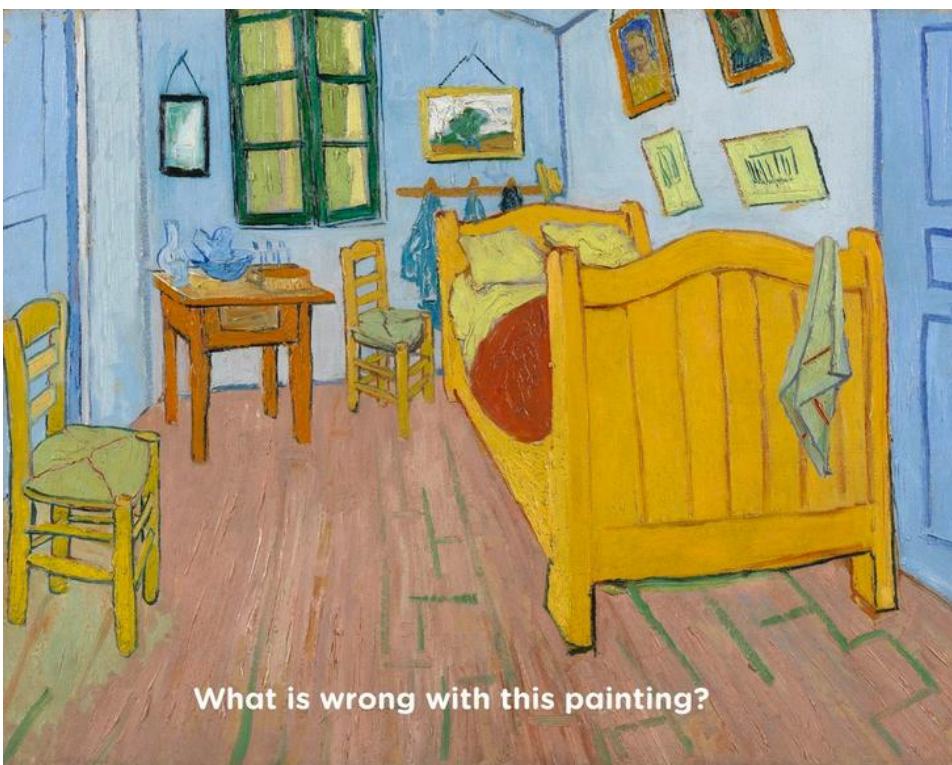
Did you look closely?
Now find the
difference!



Answer: The two lower works of art on the right-hand wall are missing.

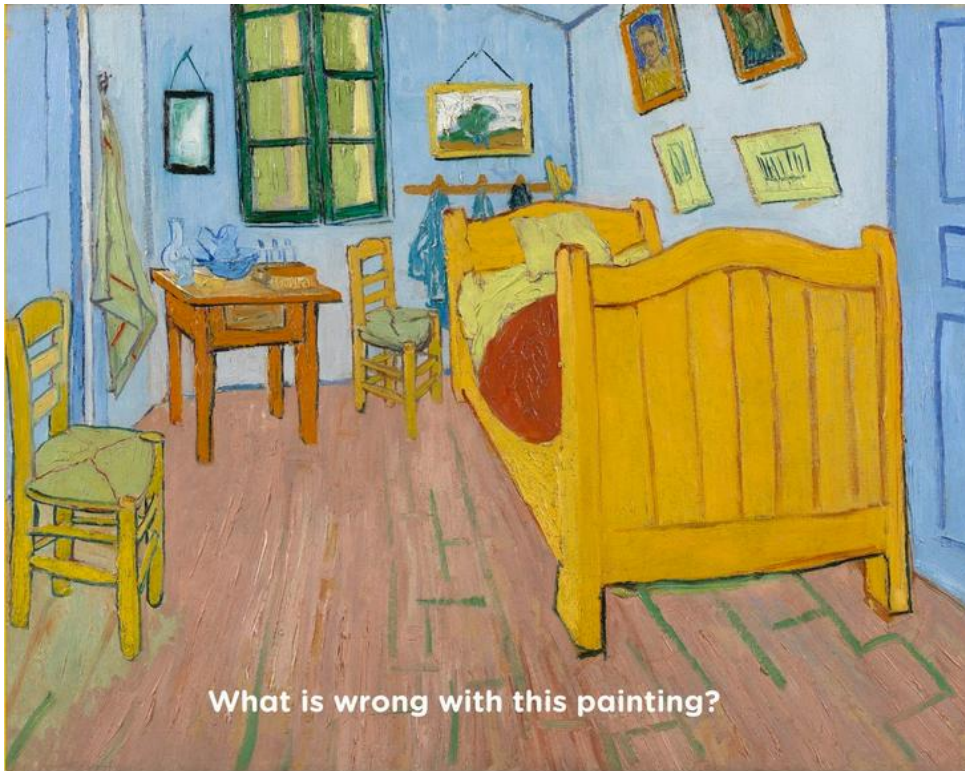


Did you look closely?
Now find the
difference!

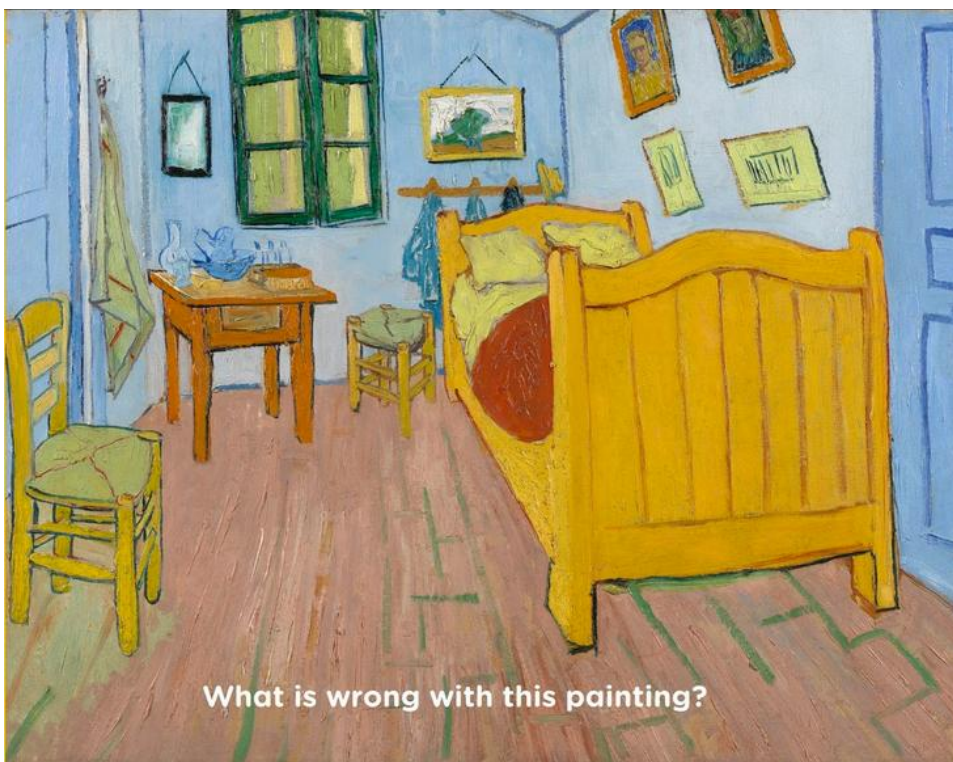


What is wrong with this painting?

Answer: The cloth draped over the end of the bed was originally hanging next to the door on the left.



Answer: Now there's only one pillow on the bed instead of two.



Answer: the back of the chair next to the bed was disappeared.

Afterwards you can discuss the game. Was it easy or hard? Which difference was the hardest to find?

The class can look a closer look at the painting here:

<https://www.vangoghmuseum.nl/en/collection/s0047V1962>