

## TYPES OF CAMERA SHOTS

Each shot defines the way a character, an action or a setting is shot, that is to say the way it is presented.



**EXTREME LONG SHOT:** Shows the setting completely *or* situates the characters according to the setting.



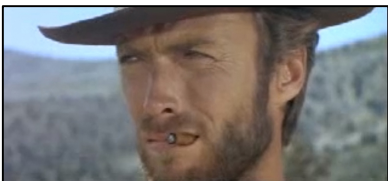
**VERY LONG SHOT:** Shows the characters completely and a large part of the setting. It is an establishing shot, which situates the action and, at the same time, gets into the action.



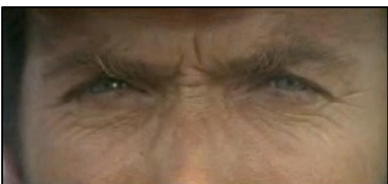
**LONG SHOT:** Highlights the main characters, separates them from the stock characters and the setting in order to focus on the action.



**MEDIUM SHOT / MEDIUM CLOSE-UP:** Shows the upper part of the body in order to frame the action.



**CLOSE-UP:** Shows an object or the expression on someone's face in order to get into his emotions.



**EXTREME CLOSE-UP:** Shows a detail on a face or an element of the setting in order to highlight something important or intense.

## TYPES OF CAMERA SHOTS

Each shot defines the way a character, an action or a setting is shot, that is to say the way it is presented.



**EXTREME LONG SHOT:** Shows the setting completely *or* situates the characters according to the setting.



**VERY LONG SHOT:** Shows the characters completely and a large part of the setting. It is an establishing shot, which situates the action and, at the same time, gets into the action.



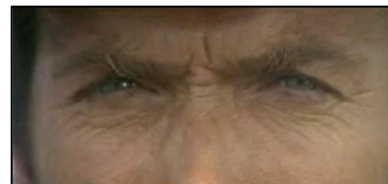
**LONG SHOT:** Highlights the main characters, separates them from the stock characters and the setting in order to focus on the action.



**MEDIUM SHOT / MEDIUM CLOSE-UP:** Shows the upper part of the body in order to frame the action.



**CLOSE-UP:** Shows an object or the expression on someone's face in order to get into his emotions.



**EXTREME CLOSE-UP:** Shows a detail on a face or an element of the setting in order to highlight something important or intense.