

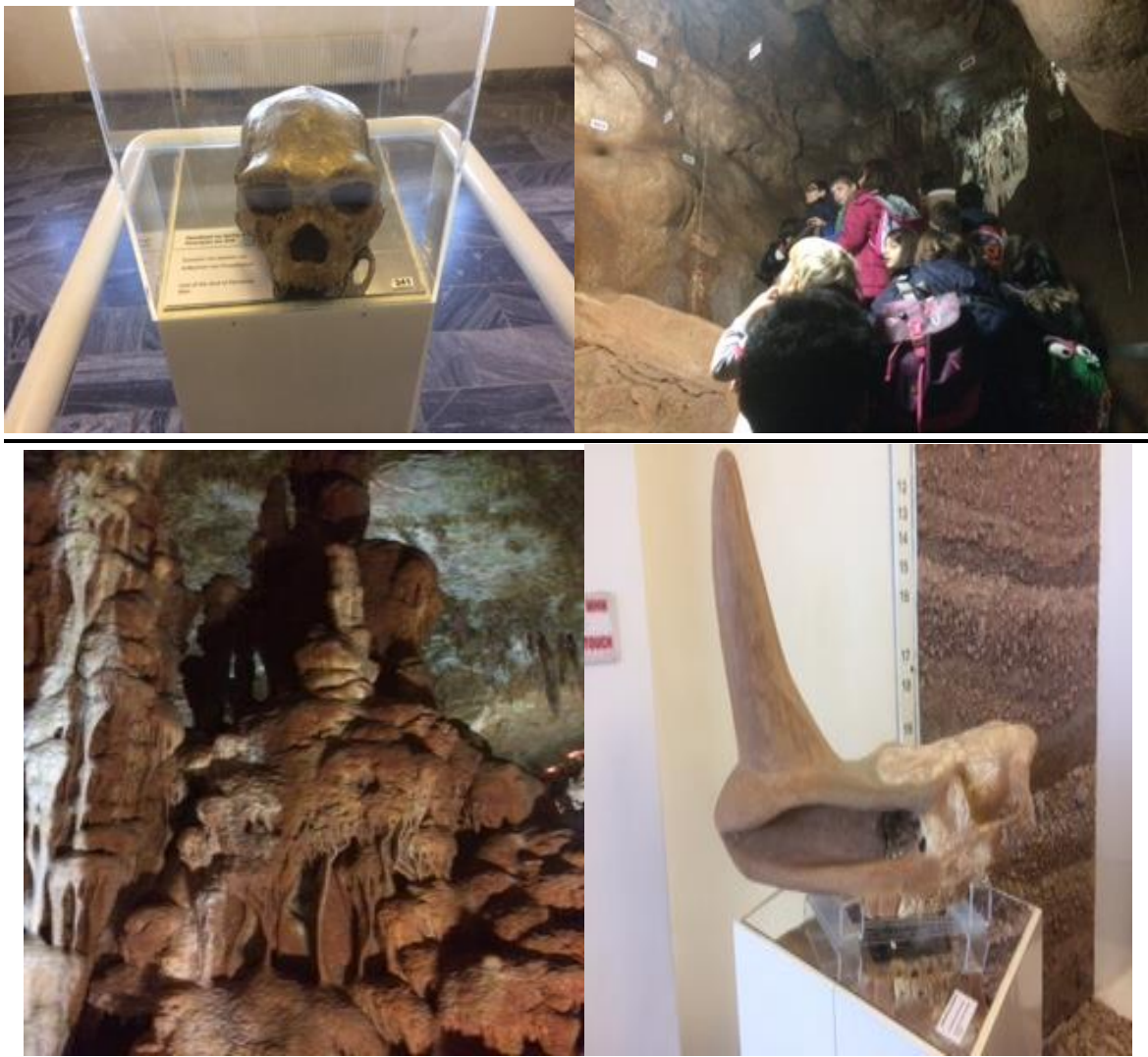
BlaBla GREECE
December 2017

PETRALONA

In the beginning of December, we visited the Petralona cave and museum. Petralona is an area close to Thessaloniki, so we went there by bus. The cave dates from the Middle Pleistocene approximately 600.000 to 300.000 years ago. It was really exciting to visit such a prehistoric place and see how people lived there and under which circumstances.

The majority of the findings in the cave were bones that belonged to animals (bones of bears, hyenas, lions, wolves, foxes, horse rhinos etc.) and a skull of a Paleolithic man.

The cave also was amazing but very cold and sometimes scary!!!!
After our visit in the cave, we visited the nearby museum and then we played in the park. Here are some of the photos we took!



Class C

A Christmas Play

On the last day before Christmas period, our two first grades of our school prepared and performed a theatrical play that consisted of a mix of well known Christmas stories accompanied by famous composers.



The performance was great, the costumes magnificent and the little actors danced with enthusiasm! The Christmas stories filled our school with Christmas spirit...