

CLIL GEOGRAPHY

JANUARY – FEBRUARY 2019

Target: primary school children of the 2nd grade

Content: Environments and landscapes in geography

Duration: three lessons

Product: A fun pop-up that lends itself well to optional activity hours.

Not only let it introduce many words for every environment, but it also develops imagination and dexterity.

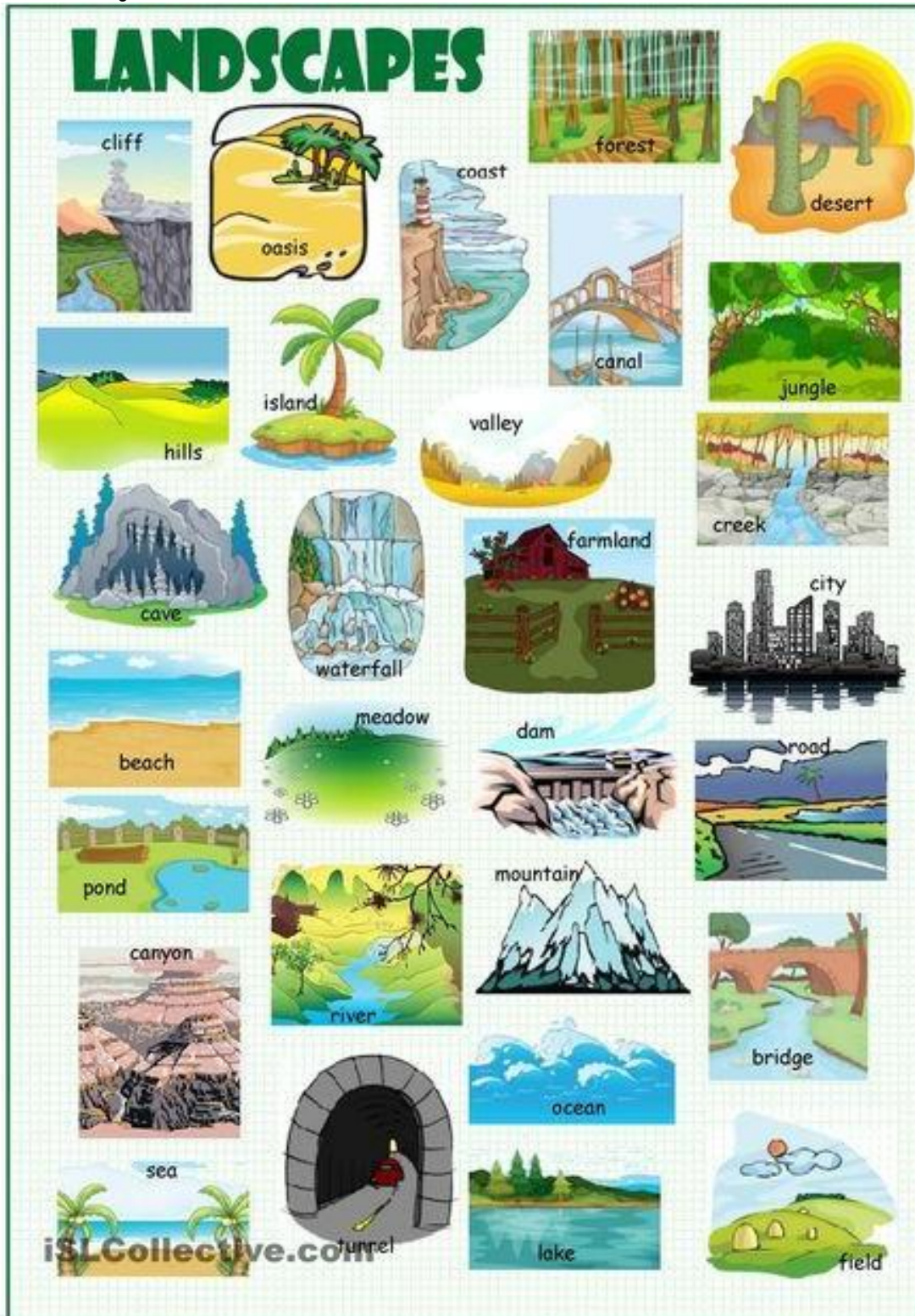
You can make a pop-up for each child, or work for example in pairs.

I recommend using different materials - tissue paper, cotton, sand, baking paper and aluminum, etc. .. Easily available materials that will make your pop-up unique and special.

STEP 1

We talk about different environments. I used photos and videos on the Lim.

I wrote the words for each environment in our picture dictionary.

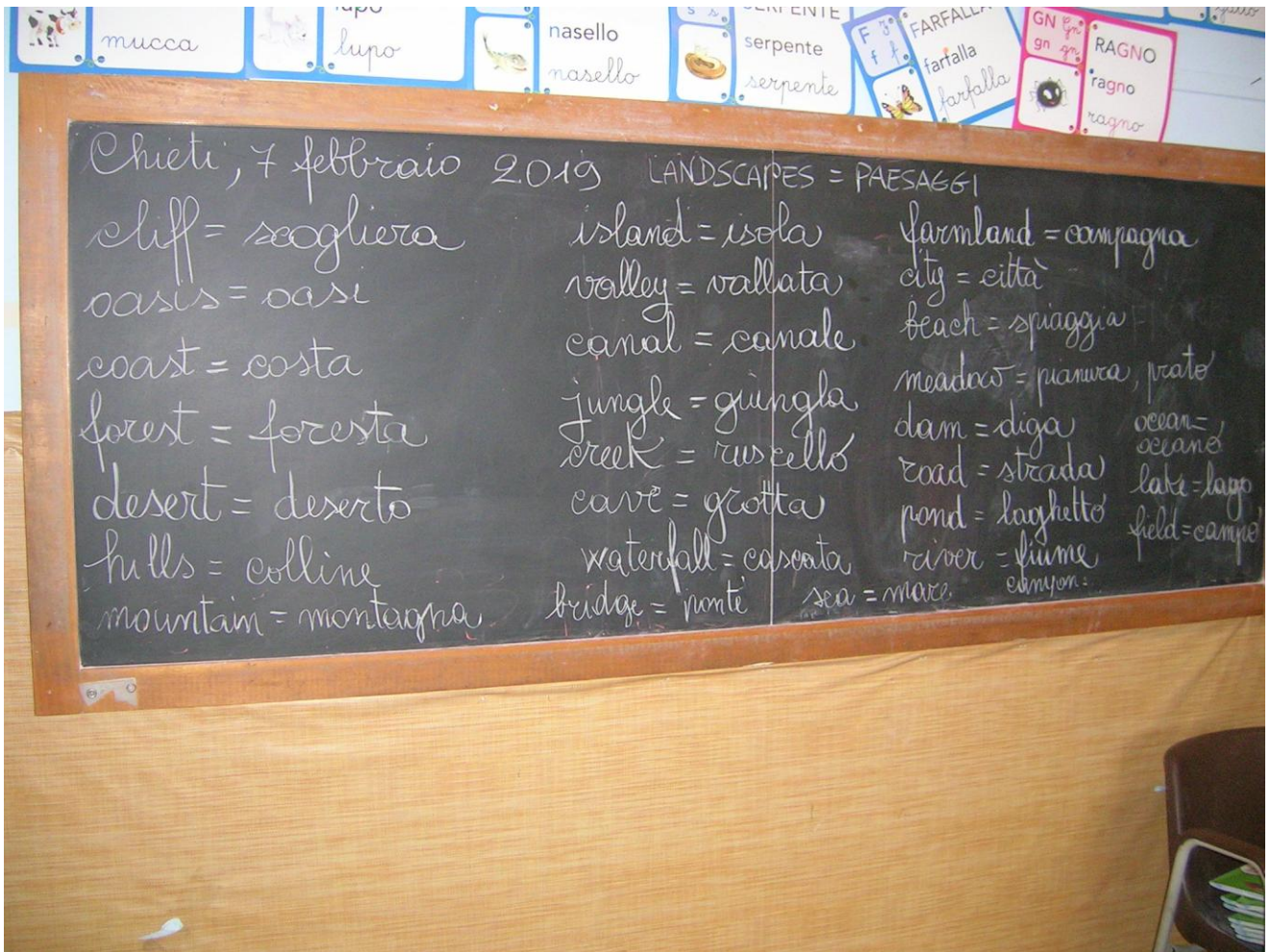




The child, while coloring, has learned the word for which the other asked the position in the form

Ho scritto i vocaboli per ogni ambiente nel nostro picture dictionary.





We played with the words looking for them in a word-research



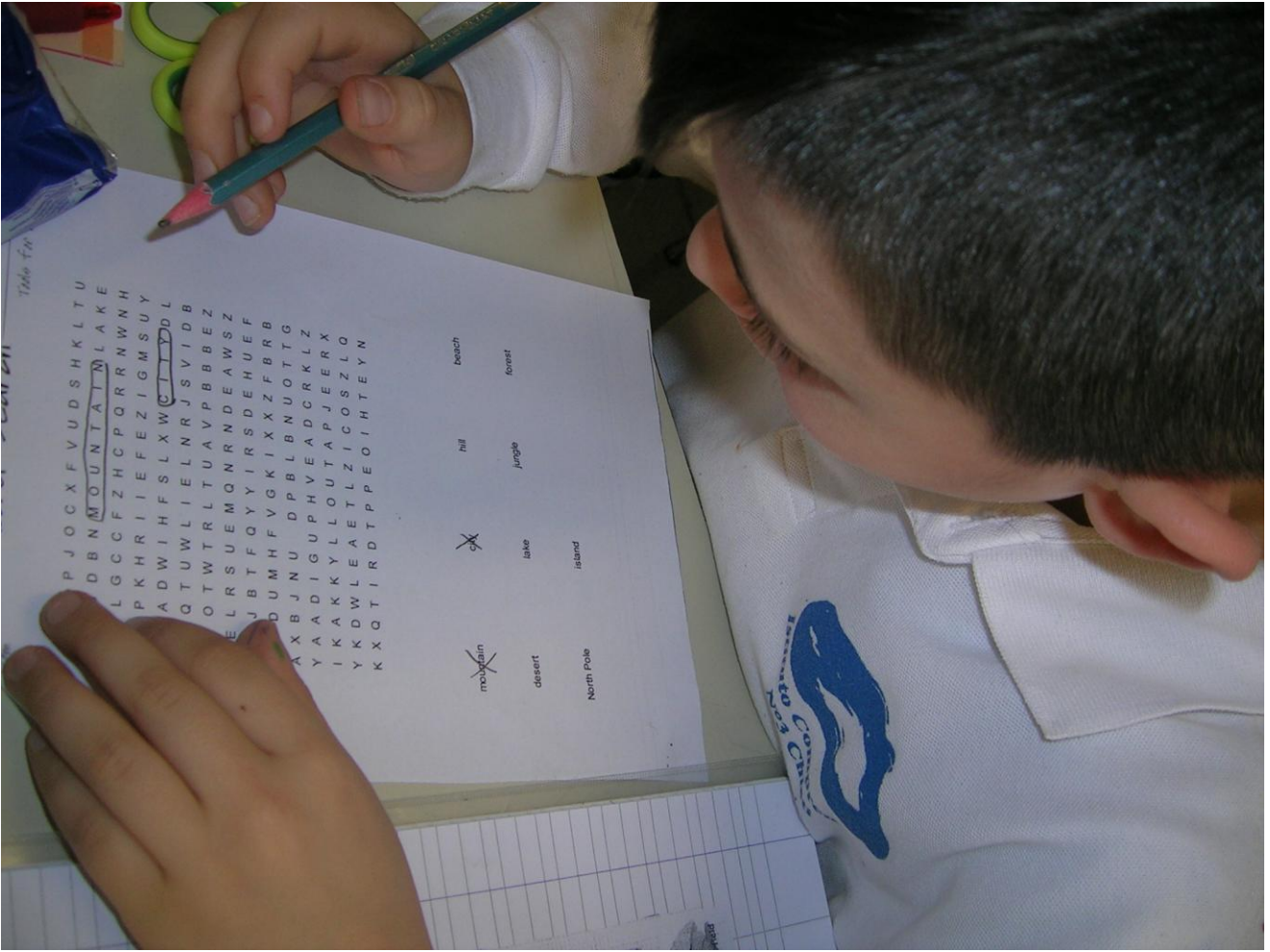


Table 10

P J O C X F V U D S H K L T U
 D B N M O U N T A I N L A K E
 L G C C F Z H C P Q R R N W N H
 P K H R I I E F E Z I G M S U Y
 A D W I H F S L X W V I D D L
 Q T U W L I E L N R J S V I D B
 O T W T R L T U A V P B B B E Z
 E L R S U E M Q R R N D E A W S Z
 J B T F Q Y Y I R S D E H U E F
 D U M H F V G K I X X Z F B R B
 X X B J N U D P B L B N U O T T G
 Y A A D I G U P H V E A D C R K L Z
 I K A K K Y L L O U T A P J E E R X
 Y K D W L E A E T L L Z I C O S Z L Q
 K X Q T I R D T P P E O I H T E Y N

~~mountain~~

desert

North Pole

~~lake~~

lake

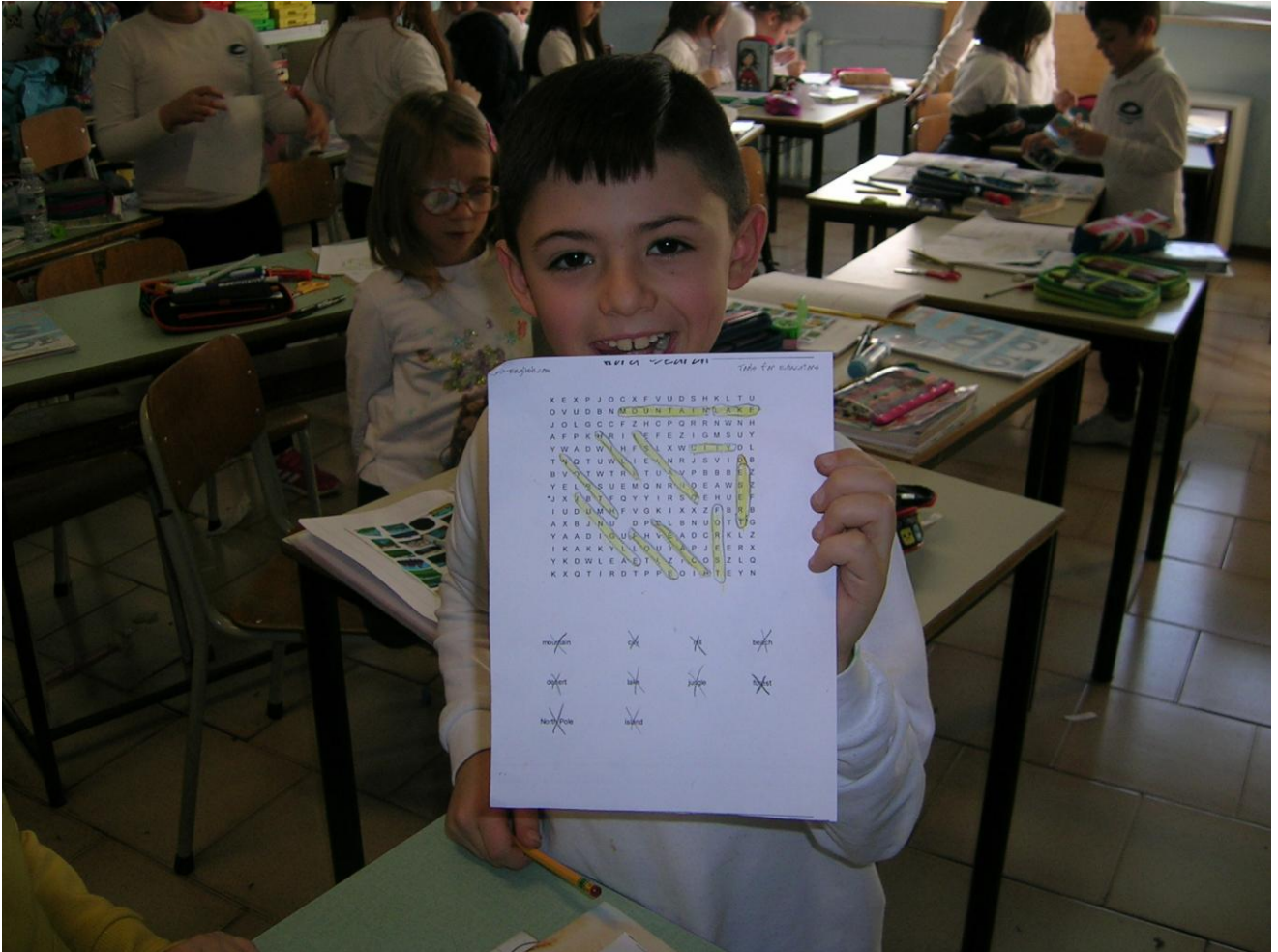
island

hill

jungle

beach

forest



WPIA SCAM 211

X	E	P	J	O	K	F	V	U	D	S	H	K	L	T	U
O	V	D	B	H	<u>D</u>	<u>O</u>	<u>N</u>	<u>L</u>	<u>A</u>	<u>K</u>	<u>K</u>	<u>A</u>	<u>X</u>		
J	O	L	G	C	F	Z	H	C	P	Q	R	R	W	N	H
A	F	K	R	I	E	F	E	Z	I	G	M	S	U	Y	
Y	W	A	D	W	H	F	O	L	X	W	<u>C</u>	<u>T</u>	<u>O</u>	<u>L</u>	
T	H	O	T	U	W	T	E	N	R	J	S	V	I	A	B
B	O	T	W	H	T	T	U	M	P	B	B	B	B	B	B
Y	E	L	S	U	B	M	O	N	R	D	E	A	W	S	Z
*J	X	I	T	F	O	Y	I	R	S	D	E	H	U	E	F
I	U	D	M	N	F	V	O	K	I	X	Z	F	B	A	B
A	X	B	J	N	D	P	E	L	B	N	U	T	I	G	
Y	A	A	D	I	U	H	A	C	C	K	L	Z			
I	K	A	K	K	A	L	O	U	F	P	J	E	R	X	
Y	K	O	W	L	E	A	D	T	X	F	O	R	Z	L	Q
K	X	O	T	I	R	D	T	P	P	O	I	M	E	Y	N

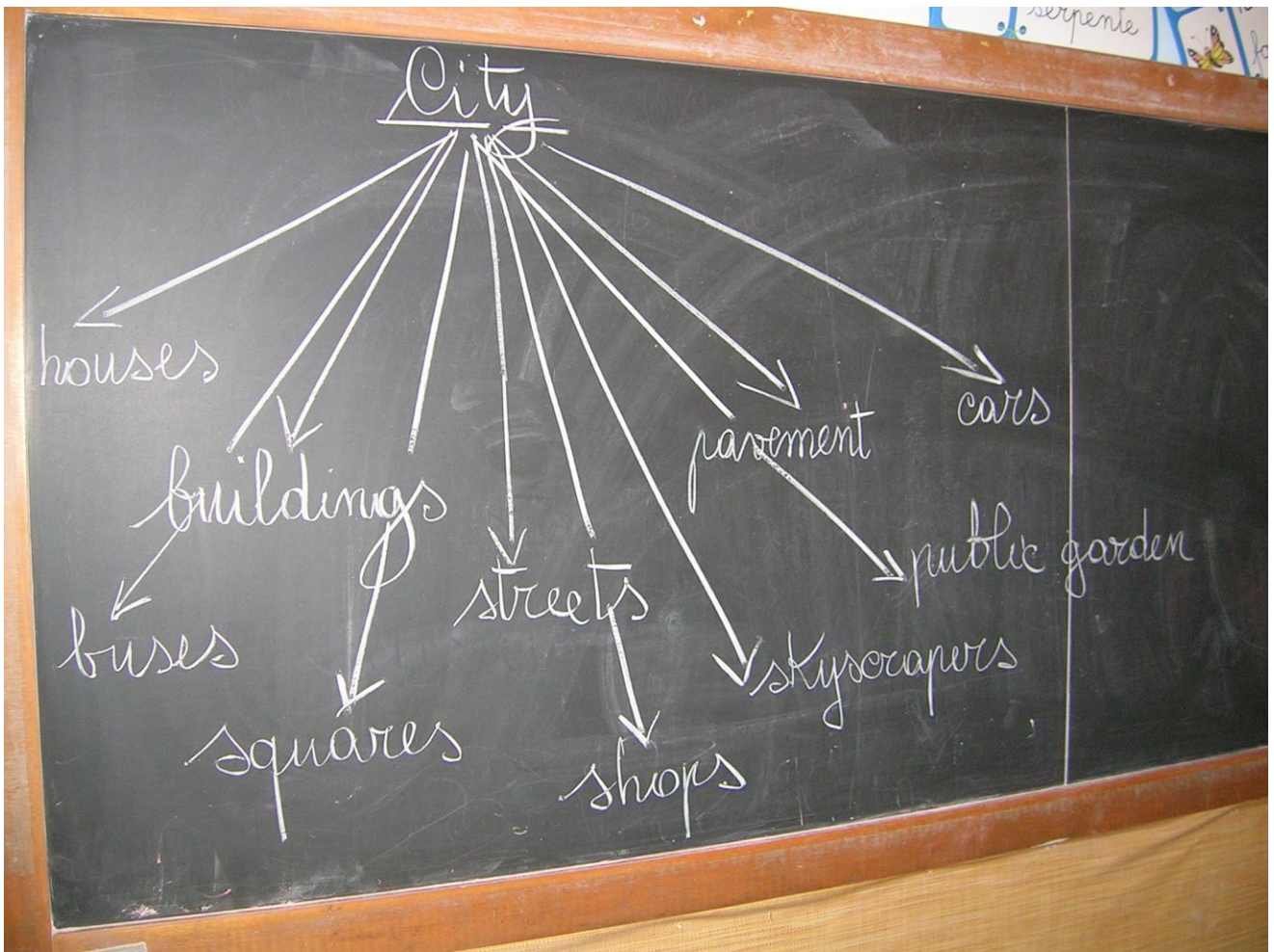
~~million~~ ~~like~~ ~~jump~~ ~~best~~
~~ghost~~ ~~lake~~ ~~jump~~ ~~best~~
~~million~~ ~~like~~

We then played an English / Italian memory



Then the first landscape known to everyone: the city

We have selected the important elements of the city





Children repeated the words without translating. Each student asked the other to say an element of the city that was on the map

CHUNKS OF LANGUAGES

8 CHILDREN'S OUTDOOR VERBS FOR CITY

walk

run

play at public gardens

ride a bike

meet with friends

eat an ice cream

skate

catch the bus

QUESTIONS: the children asked each other

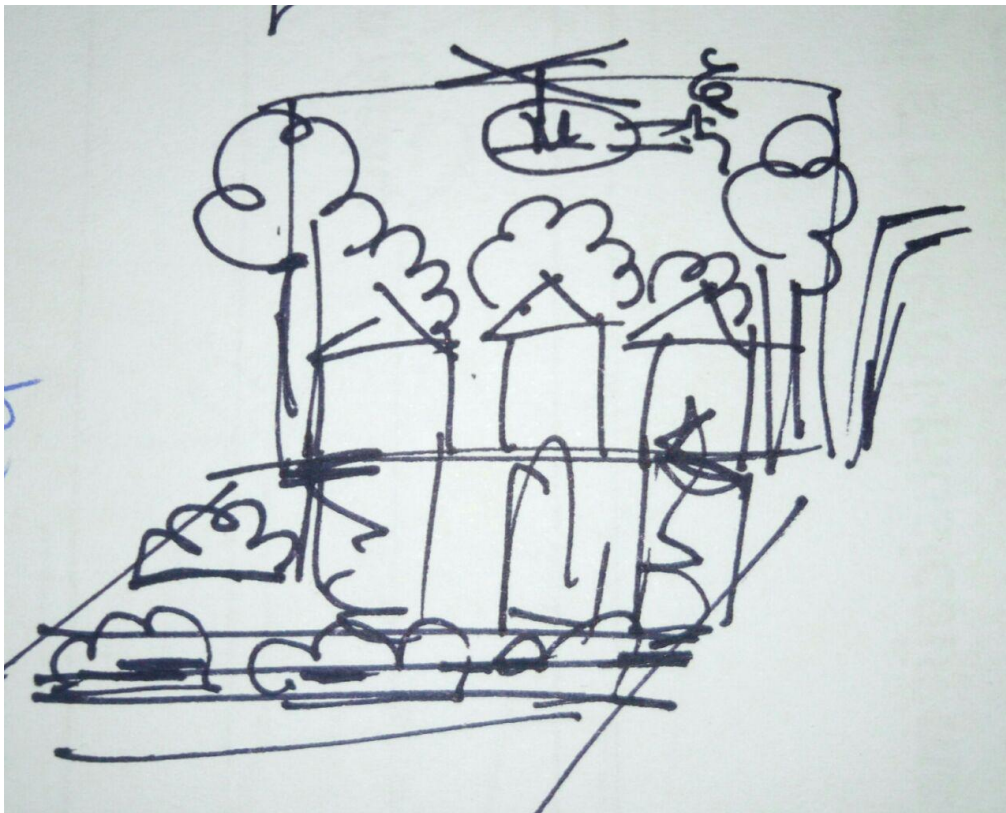
What can you do in the city?

I can _____

STEP 2

Important: before starting the pop-up on the cardboard, it is necessary to make a draft on the simple sheet. The pop-up must not contain too much detail. We must identify in the design of the elements that will be on the pop-up tabs to bring them forward.

pop-up città:

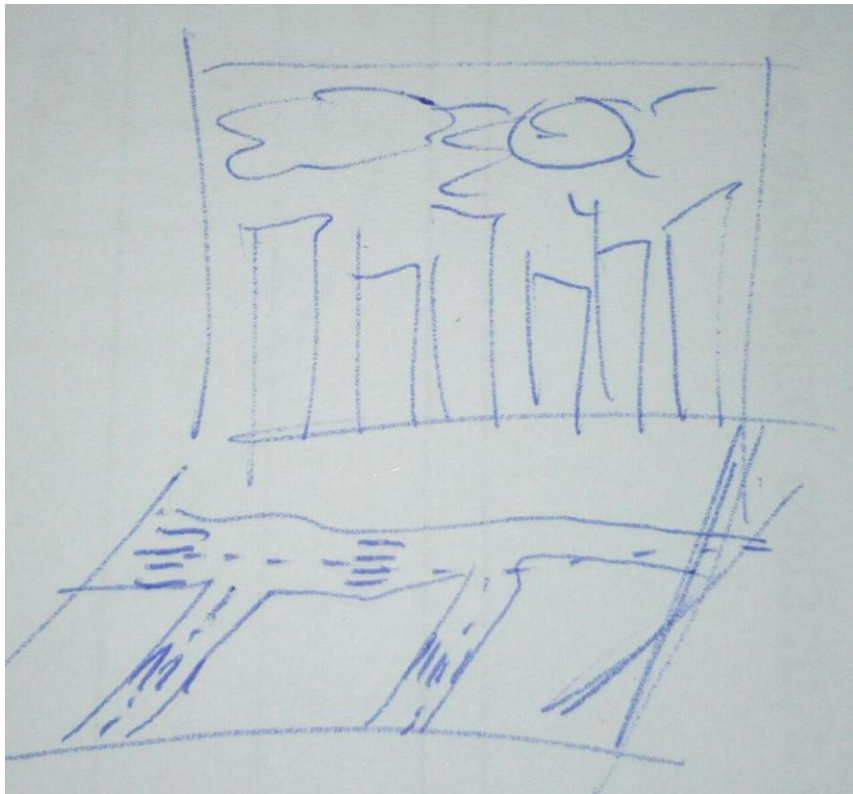


STEP 3

Each child receives an A4 card folded in half. Use different colors as well, or just blue or green, as you wish.

Draw the background on the entire A4.

You can also make a draft of only background.

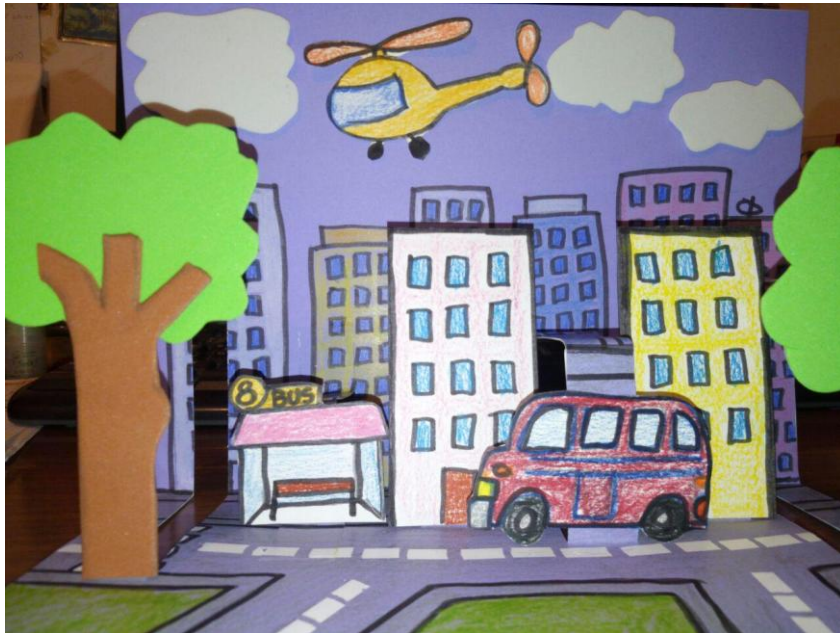


STEP 4

Once you've drawn the background, make sure you agree with each child on which items to put in front of, and based on that, just now, cut out the pop-up tabs.

STEP 5

Finished with the various elements.



Note:

Use different materials to stimulate children's imagination and dexterity.

For example:

cotton - snow

tin foil - water

blue wool threads - water

soft rubbery paper - trees and plants

paper oven - ice

sand - desert

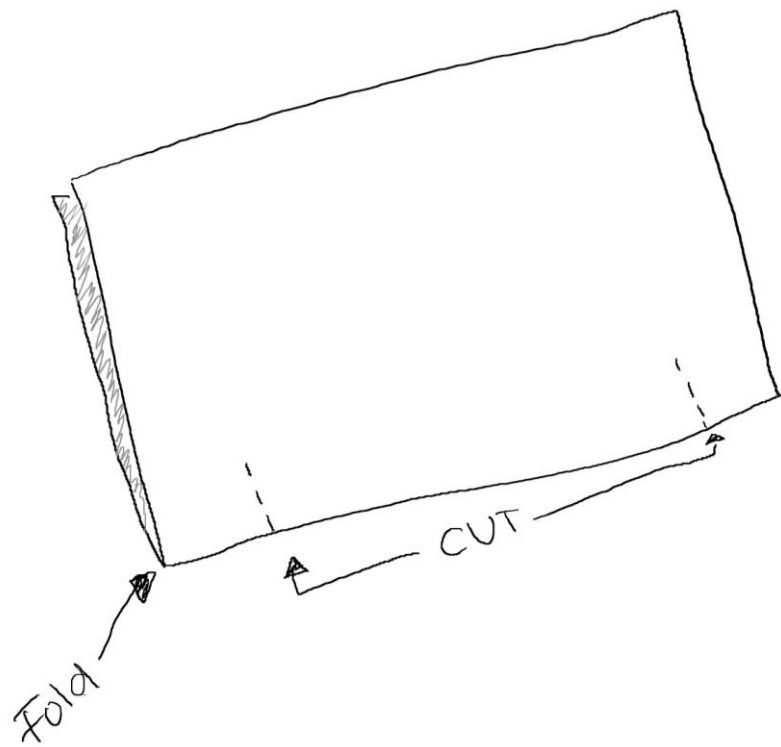
etc.

Good work and have fun!

1. Take a sheet of thick paper and fold it in half on the long side (overlapping the two short sides: one A4 21 x 29.7 sheet becomes 21 x 14.35).



2. Draw the profile of a city on the fold of the obtained sheet.
Draw many buildings with many doors and windows.



3. Fold the sheet back in half, with the city inside. Make two cuts along the fold about 4 cm. Fold the flap back and forth and then fold forward inside the ticket.



4. Cut the other piece of paper in half. Draw another profile of the city along the edge (make sure the buildings are close to each other) and then cut the profile of the buildings.



5. Draw the moon in the remaining piece of paper and cut it.



6. Glue the city cut into the fold of the ticket and attach your moon on the ticket (we used thick double-sided tape so that the moon is in relief)



7. Congratulations, you have made your pop-up!