

Introducing Stockwell Primary School



ERASMUS 2018/2020 - Learning by doing

This is us... located in sunny South West London



In the borough of Lambeth...
The 5th largest in central London



In the borough of Lambeth...
The 5th largest in central London

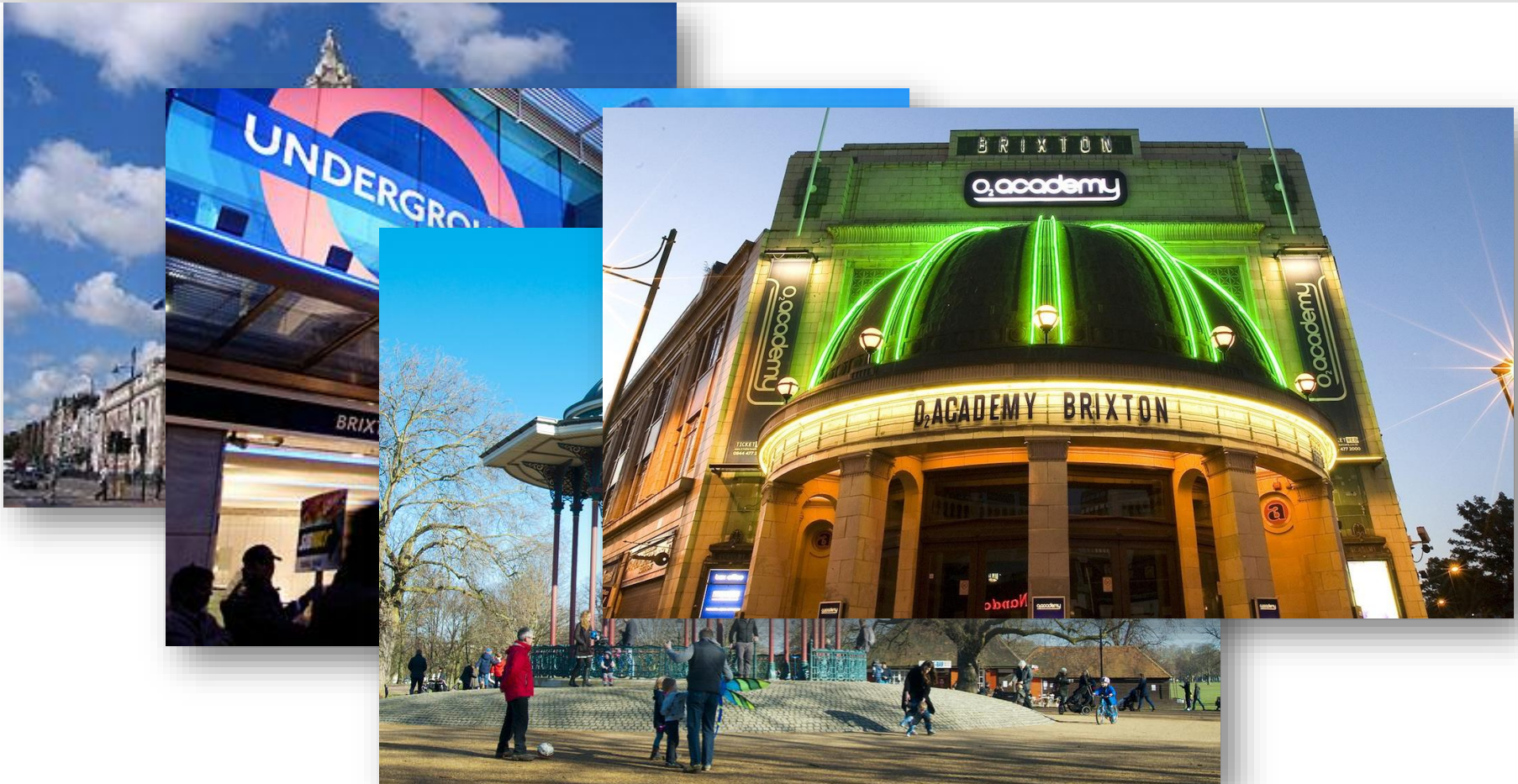


In the borough of Lambeth...

The 5th largest in central London



In the borough of Lambeth... The 5th largest in central London



Stockwell is a three form entry primary school for children aged 2 to 11 years old



We have children from all over the world
with many different languages spoken.



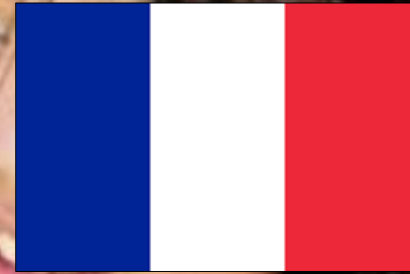
We have children from all over the world with many different languages spoken including...



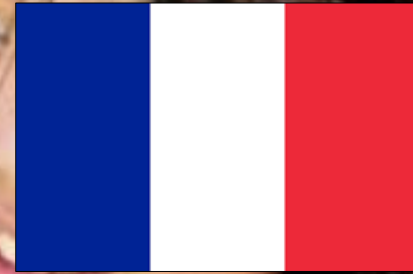
We have children from all over the world with many different languages spoken including...



We have children from all over the world with many different languages spoken including...



We have children from all over the world with many different languages spoken including...



We have children from all over the world with many different languages spoken including...



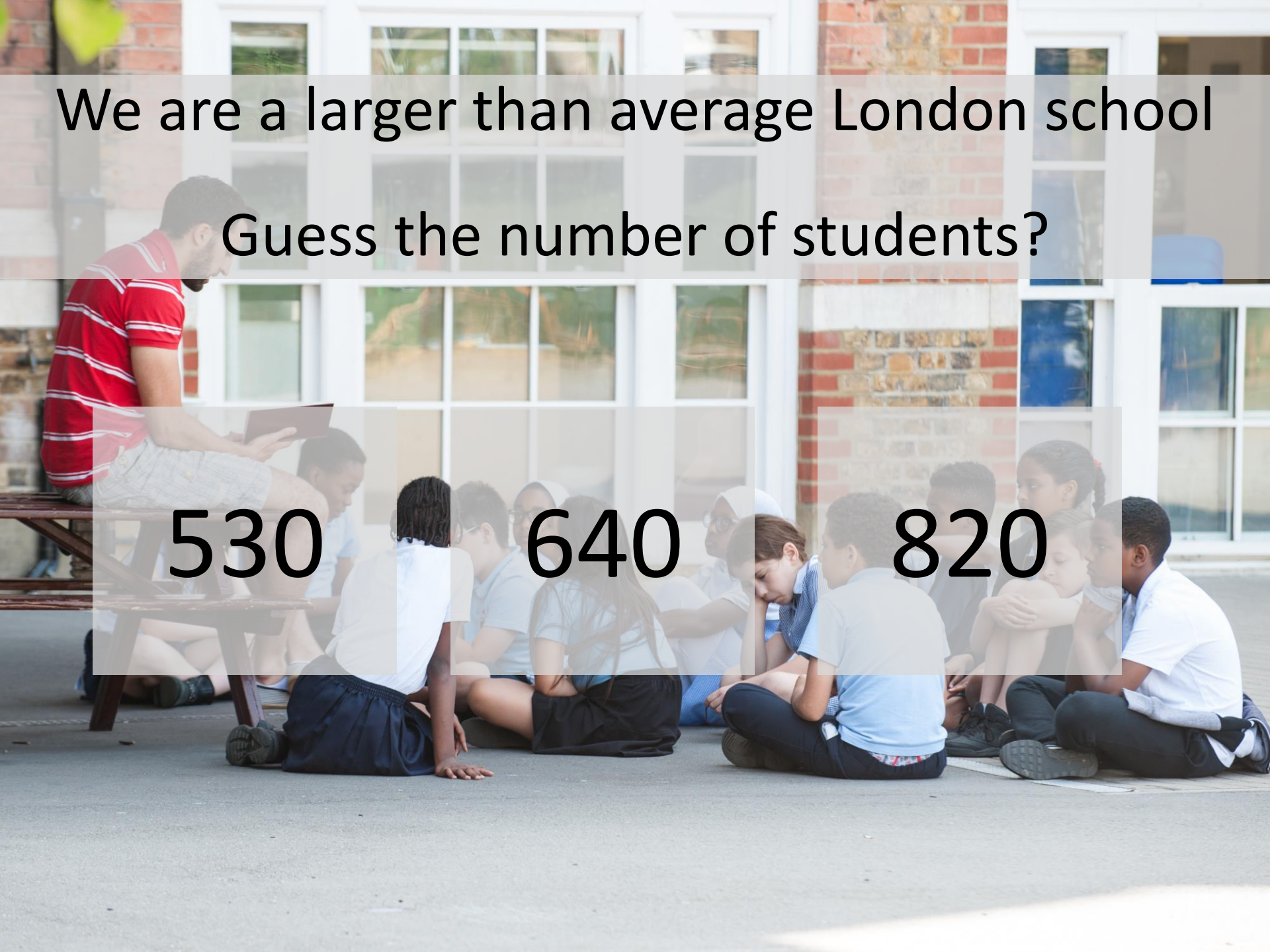
We are a larger than average London school

Guess the number of students?

530

640

820



We are a larger than average London school
Guess the number of students?

640



Let's take a quick tour of Stockwell Primary School...

<https://www.youtube.com/watch?v=thlthlDvZ3I>

Playgrounds: Stockwell has three of them so there's lots of space to run and play.



Playgrounds: Stockwell has three of them so there's lots of space to run and play around.



Playgrounds: Stockwell has three of them so there's lots of space to run and play around.



Dinner hall: Where children can enjoy nutritious, healthy food prepared by friendly kitchen staff



We have three areas for PE:
Red Hall, Yellow Hall and the Main Hall.



ICT Suite



Music room with lessons from a specialist music teacher



Stockwell Primary has one world-famous attendee... Does anyone know who this young man grew up to be?



Stockwell Primary has one world-famous attendee... Does anyone know who this young man grew up to be?



Quick Quizz

- In which part of London is Stockwell Primary School?
- How many playgrounds does Stockwell have?
- Name an instrument you might find in the music room.