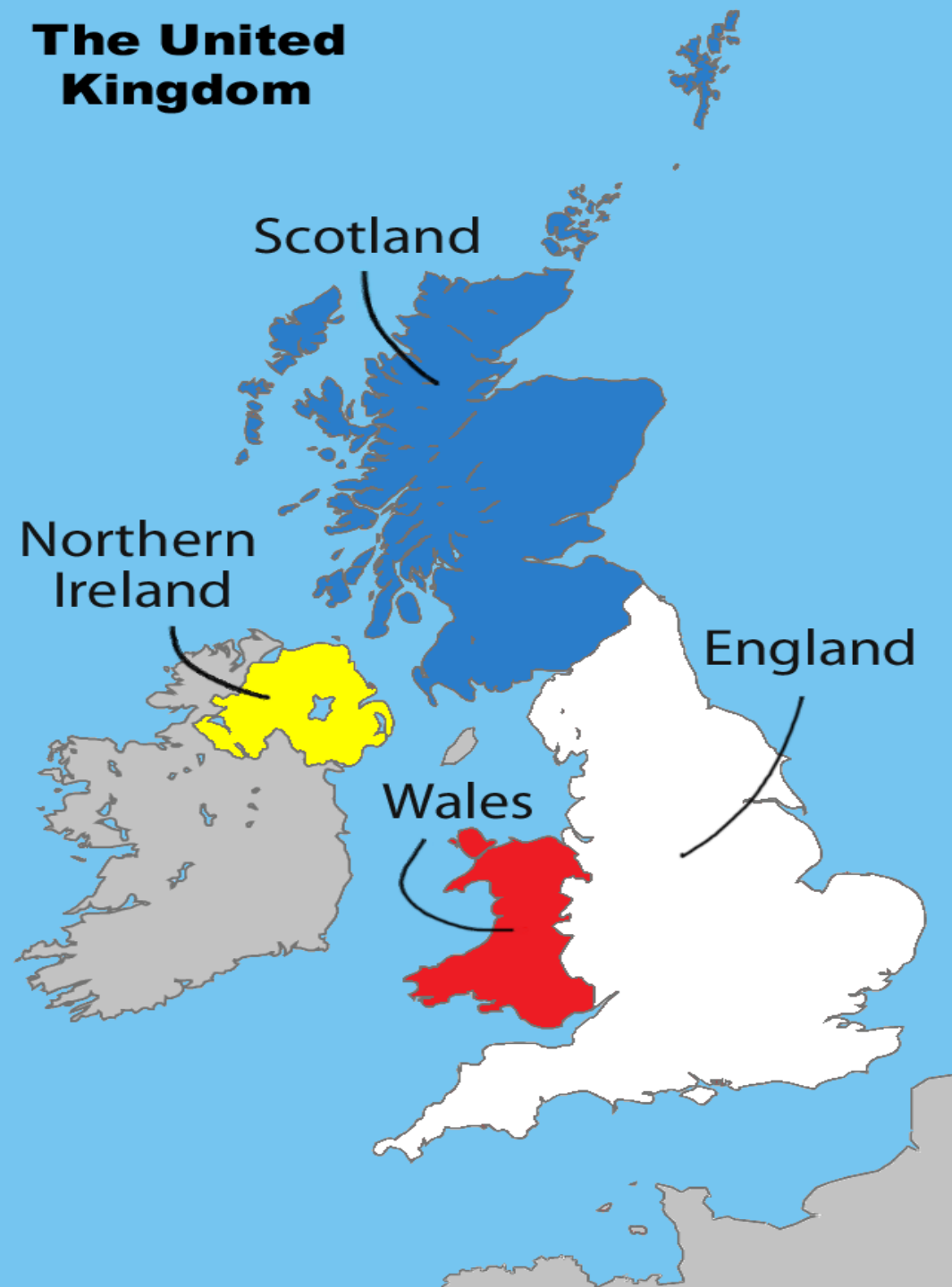


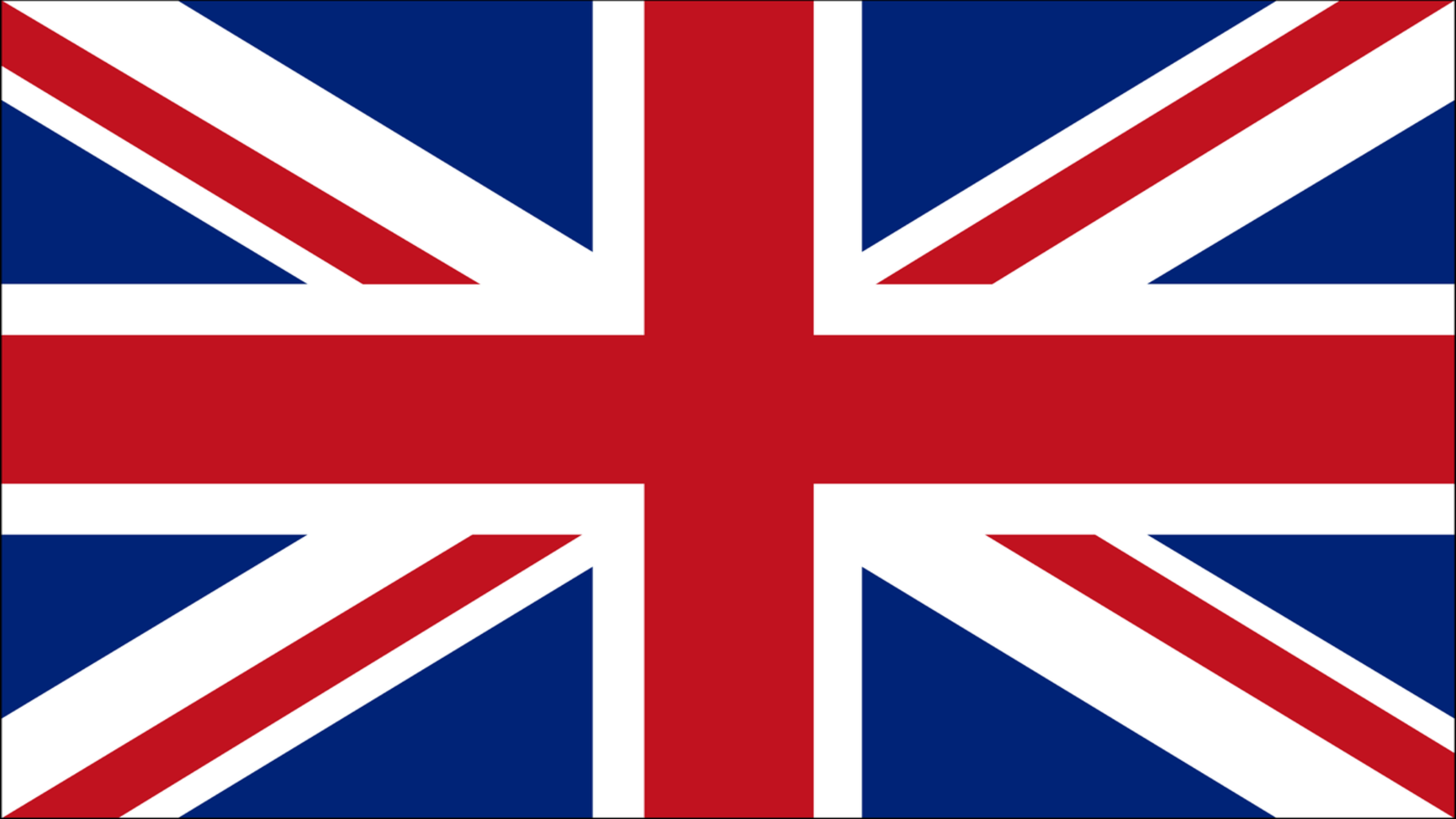
UK: LONDON

ERASMUS 2018/2020 – Learning by doing

UNITED KINGDOM

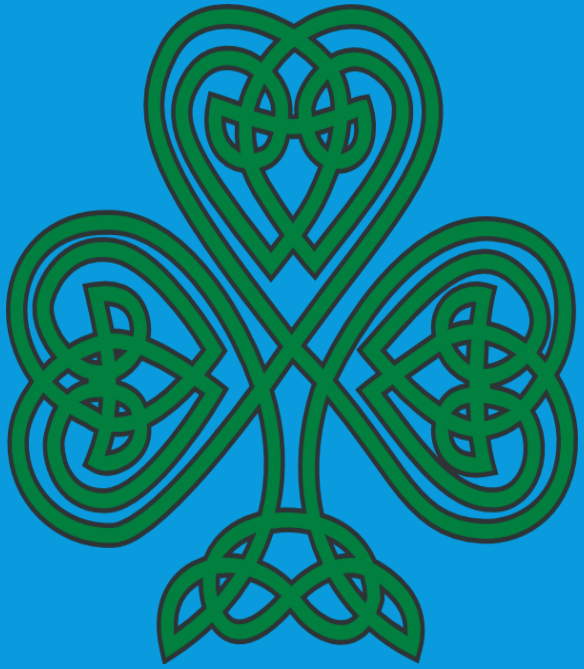
- The United Kingdom includes Great Britain and Ireland
- Ireland split – Northern Ireland & Republic of Ireland
- Great Britain made up of England, Wales & Scotland
- 66 million people live in UK]
- Main language is English
- Pound not the euro!
- Ruled by Queen Elizabeth II since 1952
- Warm summers, cold winters & lots of rain!



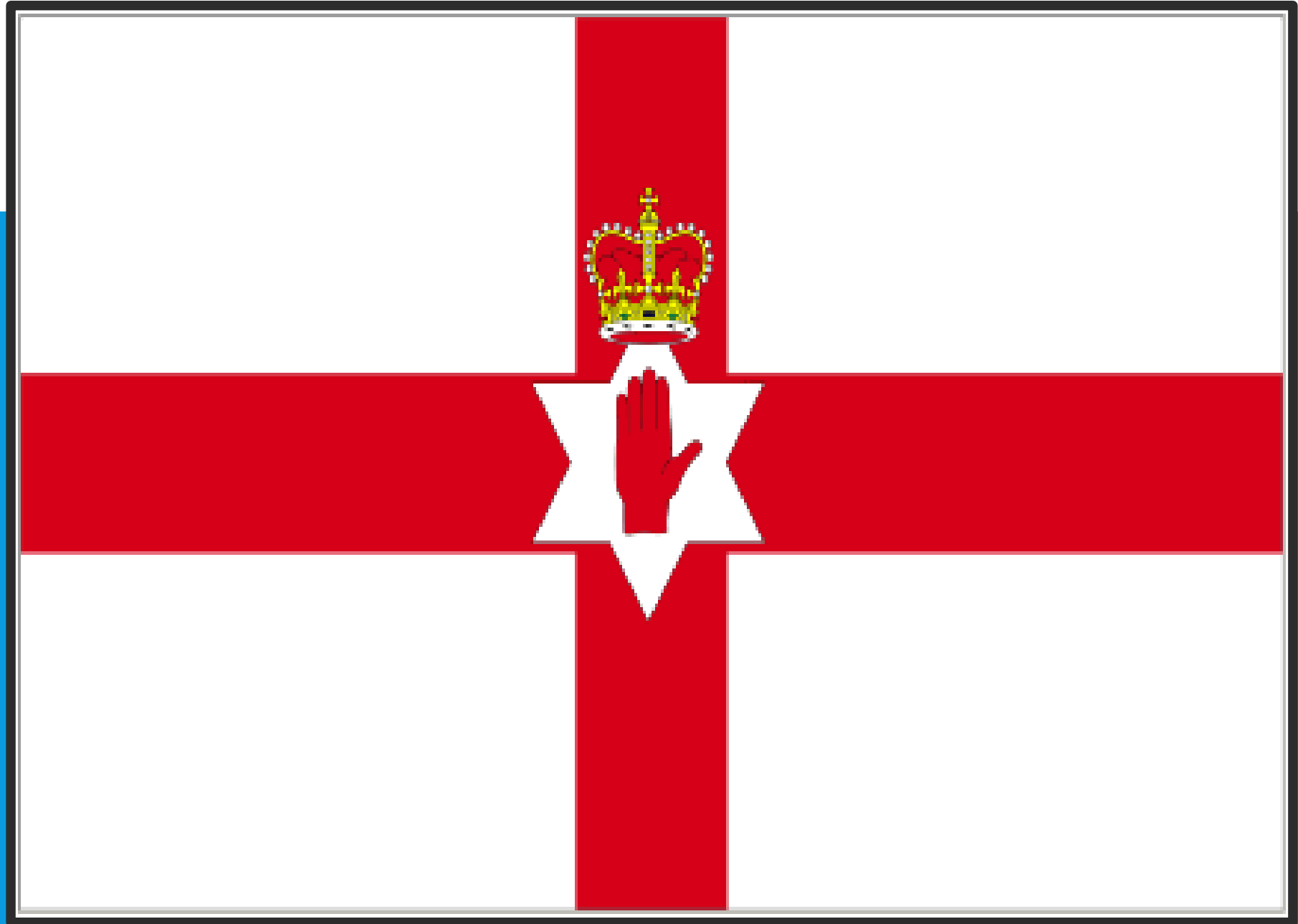




IRELAND

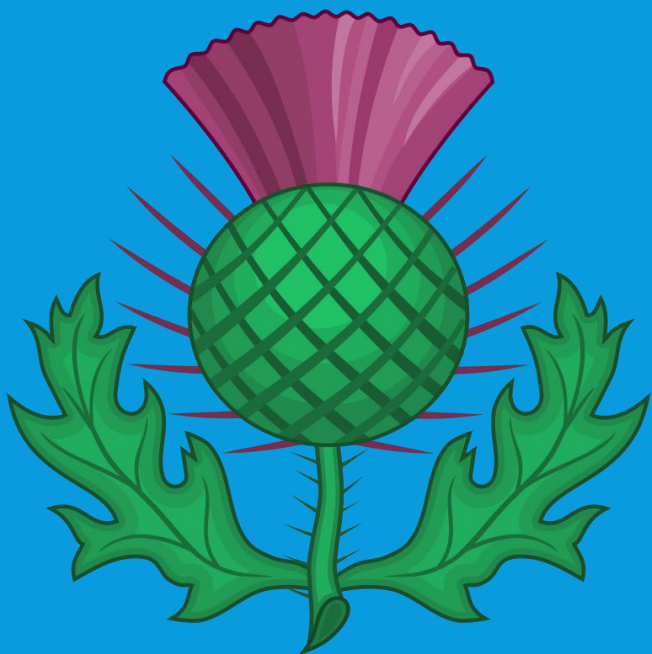


Shamrock





SCOTLAND



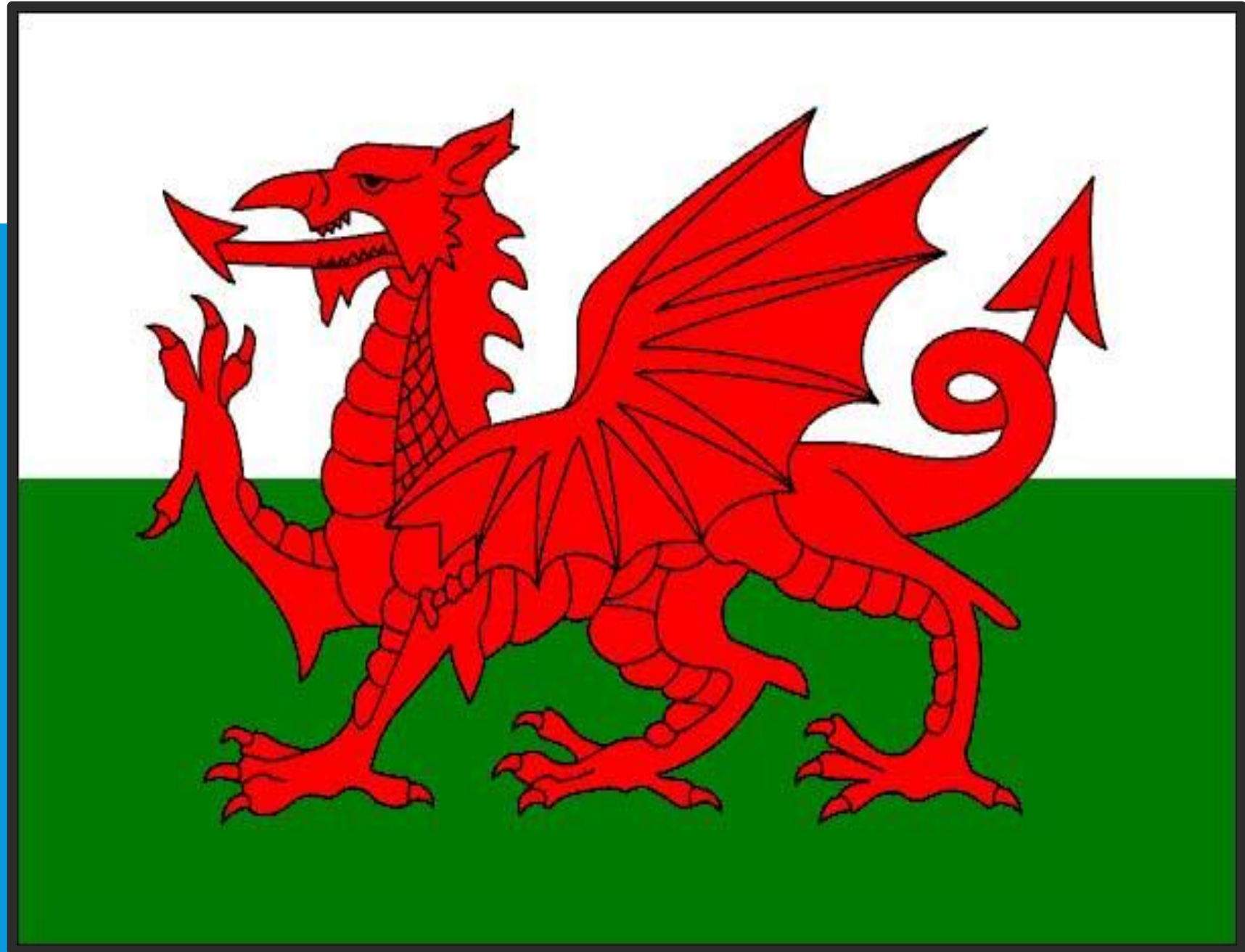
Thistle





WALES

Daffodil



LLANFAIRPWLLGWYNGYLLGOGERYCHWYRNDROBWLLLLANTYSILIOGOGOGOCH

Llan-vire-pooll-guin-gill-go-ger-u-queern-drob-ooll-llandus-ilio-gogo-goch

 ASDA

Amni Tairn Walei / Denau Amni Cymru

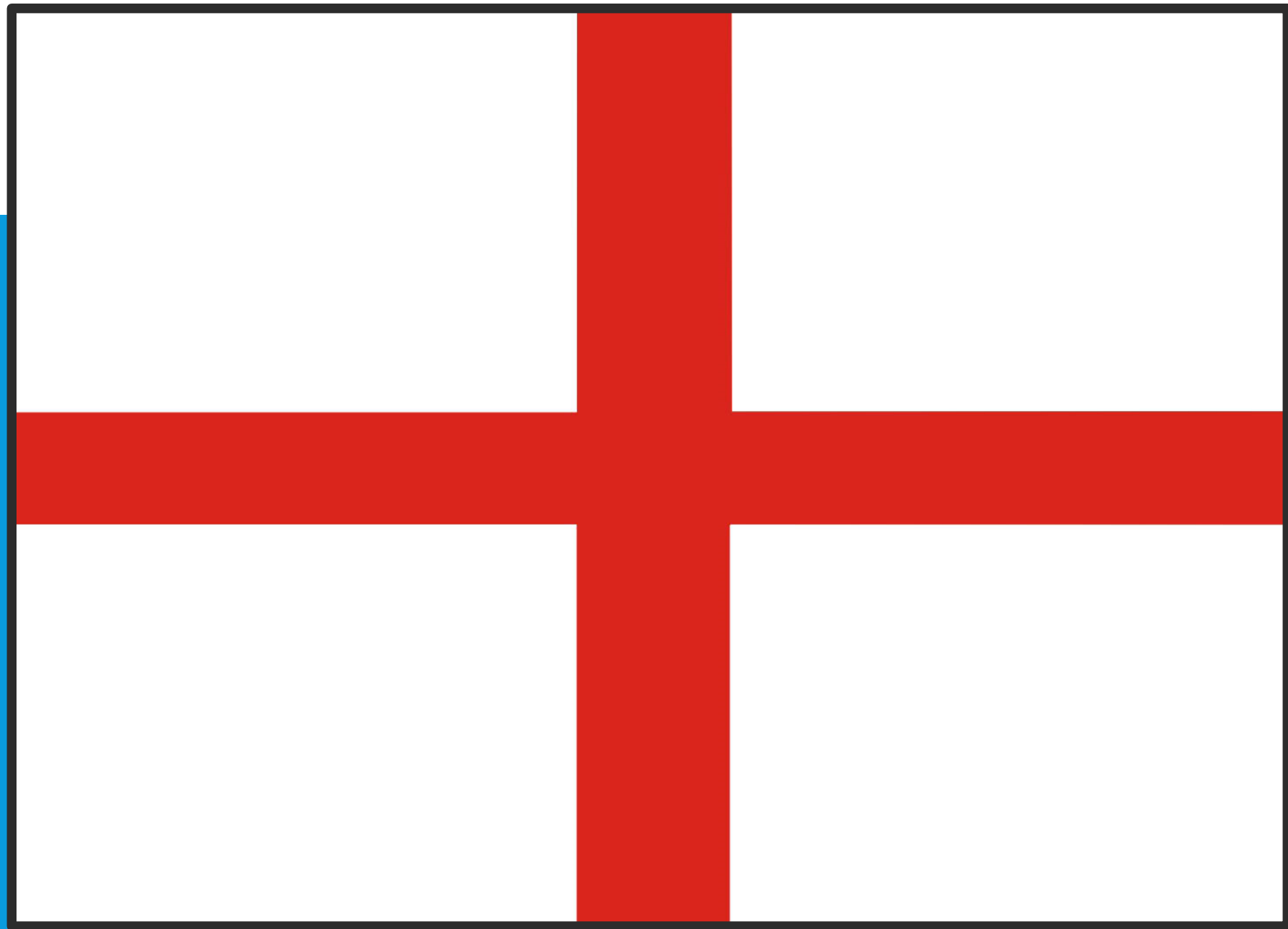
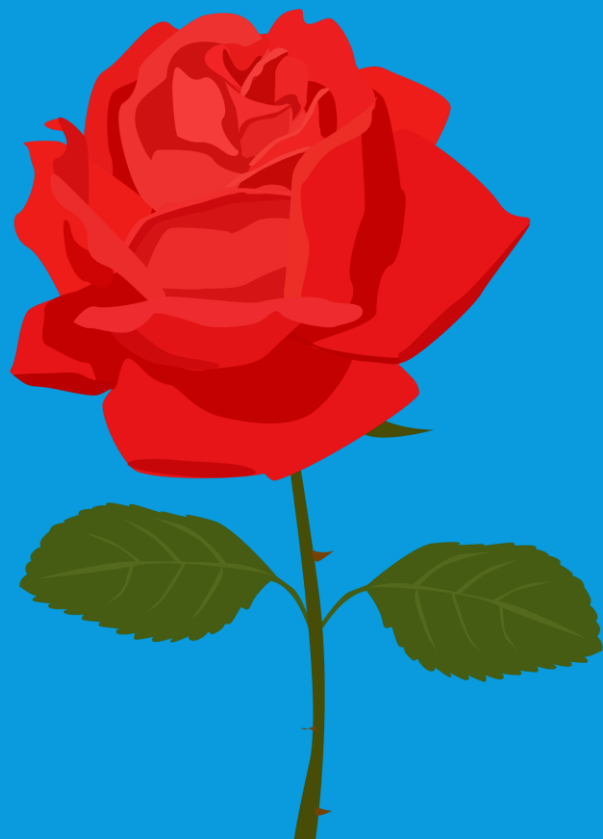
Way Out ←

Holyhead



ENGLAND

Rose





ONE

TELEPHONE

PULL

LONDON

- One of the most important cities in the world
- Capital city of England and largest city in the United Kingdom
- Built by the Romans, two thousand years ago
- Mayor of London (Sadiq Khan)



GEOGRAPHY

- In the south-east of England
- Stands on the River Thames which leads to the North Sea
- 8.8 million people live in London
- Another 14 million people close enough that they could travel to London to work
- Has 4 World Heritage Sites:
 - Tower of London (castle)
 - Kew Gardens
 - Westminster Abbey (church)
 - Greenwich Royal Observatory (where people can learn about stars and planets)



Tower of London



Crown Jewels



Kew Gardens



Westminster Abbey



Greenwich Royal Observatory





Look at the amazing view of London!

London

BOROUGHGS

- City is divided up in to smaller parts called boroughs
- 12 Inner London
- 20 Outer London



Camden



Kensington & Chelsea



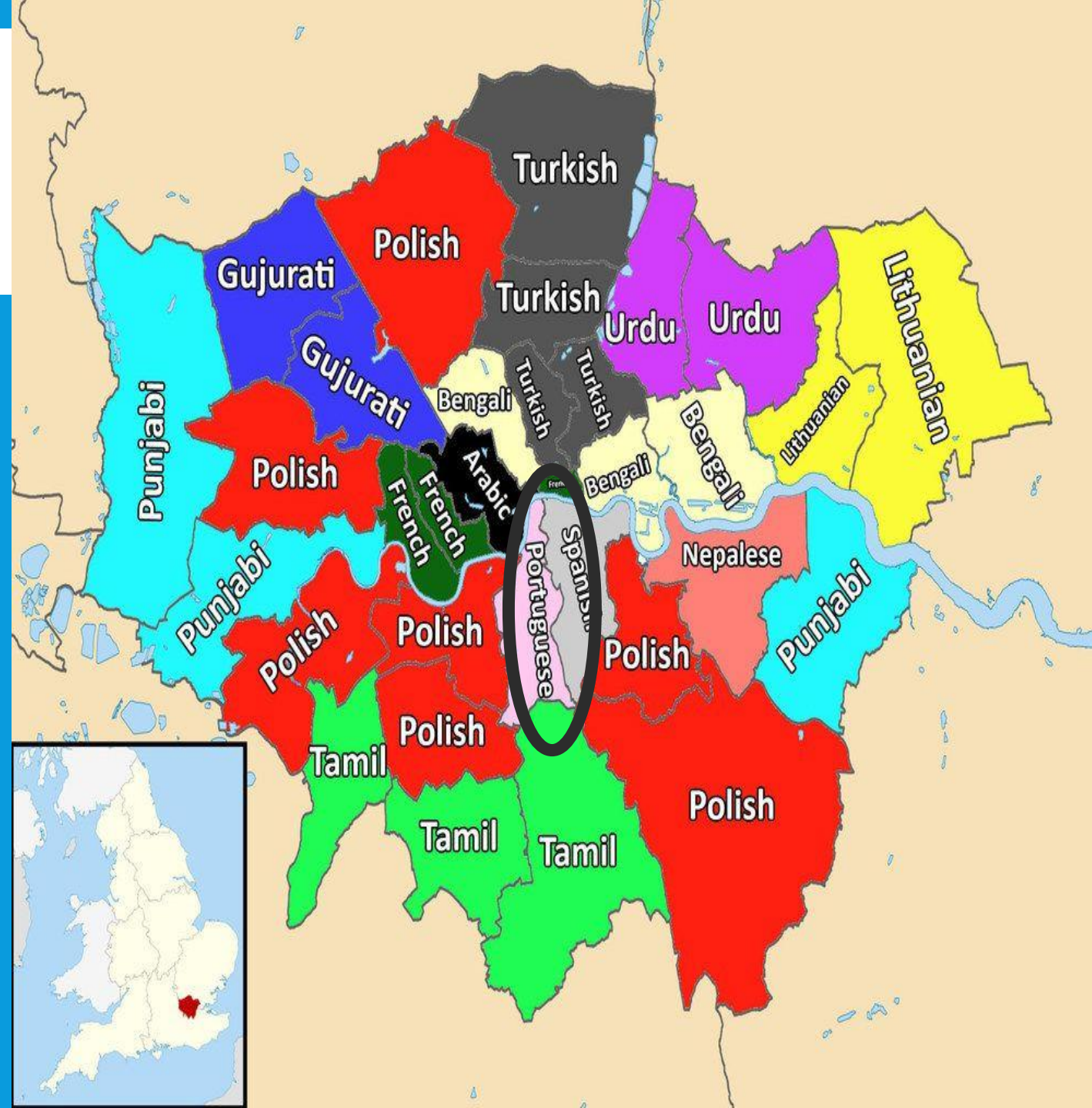
Richmond Park



PEOPLE OF LONDON

- Wide range of people and cultures
- London is the most diverse area of the United Kingdom
- Over 300 languages spoken
- Most universities in any city in Europe

Picture shows the most popular spoken language in each part of London



Chinatown



QUICK QUIZ!

Which flag has a dragon on?

- *England*
- *Ireland*
- *Scotland*
- *Wales*

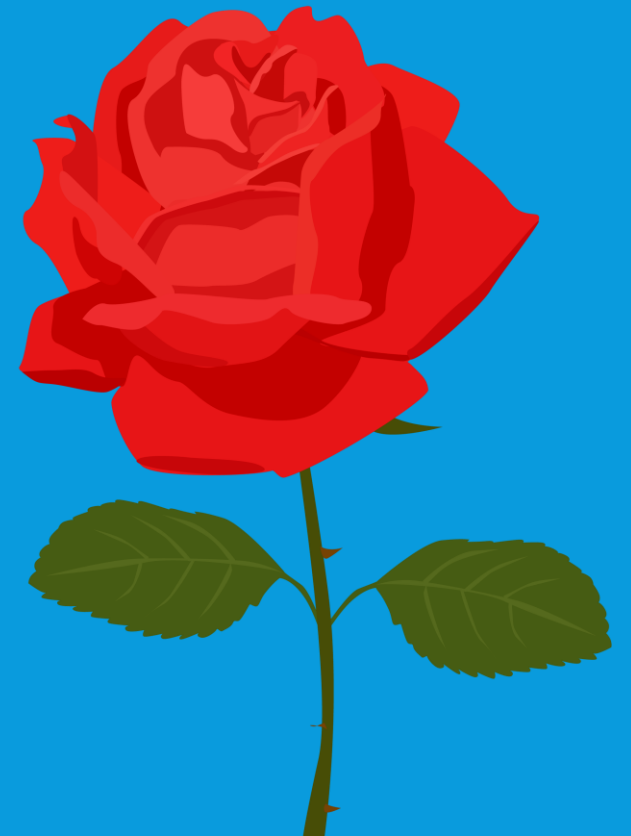


QUICK QUIZ!

Which country's symbol is a red rose?

England

- *Ireland*
- *Scotland*
- *Wales*



QUICK QUIZ!

How many people live in London?

▪ *8.3 billion*

▪ *8.8 million*

▪ *8,000*

▪ *880,000*



QUICK QUIZ!

What is the name of the Queen of the UK?

- *Queen Mary II*
- *Queen Catherine II*
- *Queen Elizabeth II*
- *Queen Victoria II*

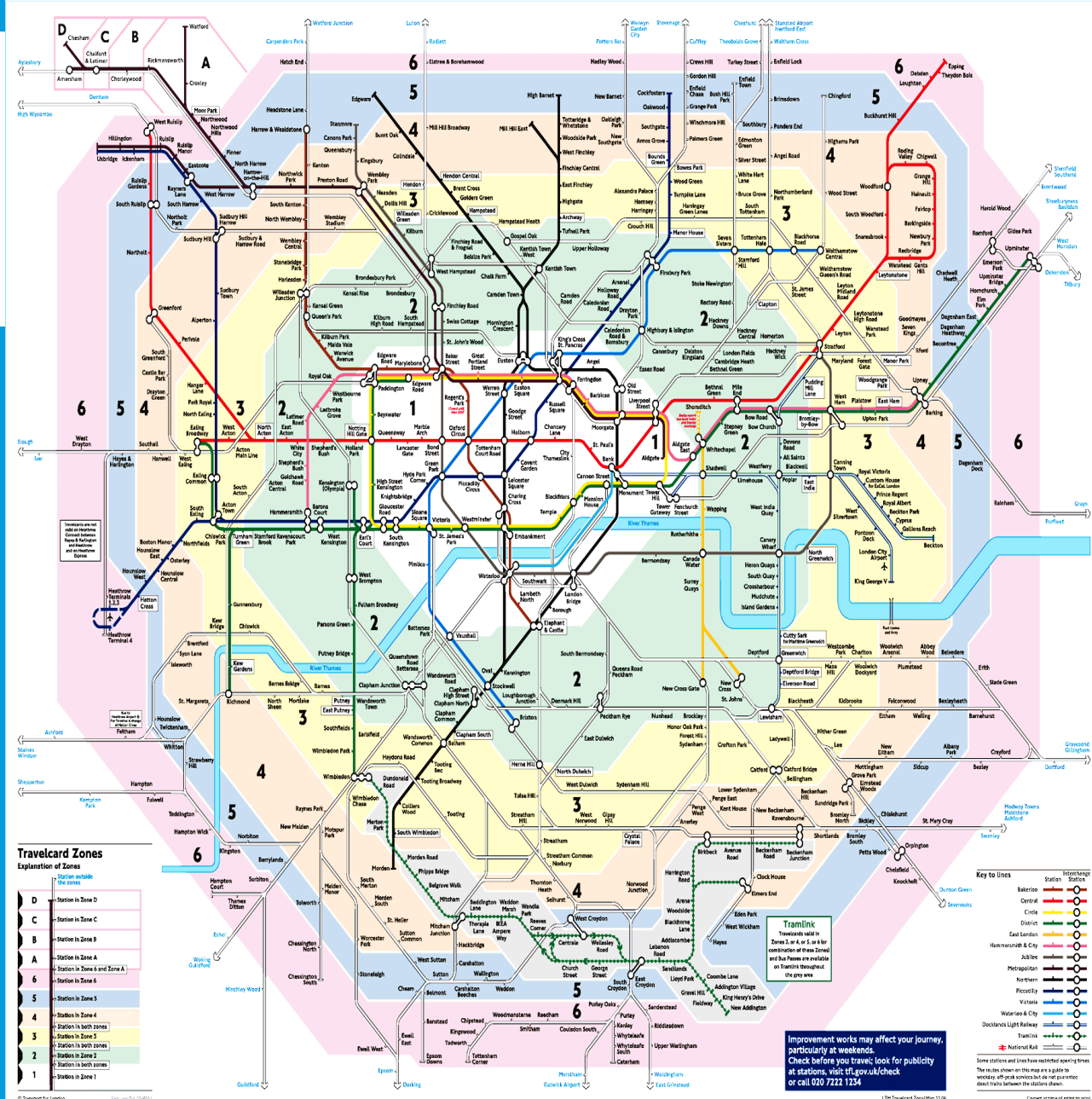


END OF QUIZ PART 1!



TRANSPORT

- Most visited city in the world as it has 4 major airports in the city
- Easy to travel in London without a car
- Most people do not own cars
- Popular methods of transport include:
London underground (tube), train, bus & bike.
- London underground can take you an hour in any direction – areas not considered 'London'
- Emirates air line & boats – tourism





Trafalgar Square
Piccadilly Circus
Hyde Park Corner

9

ROYAL ALBERT HALL

RTM 012

London Bus

Boris Bikes



Thames Cruise



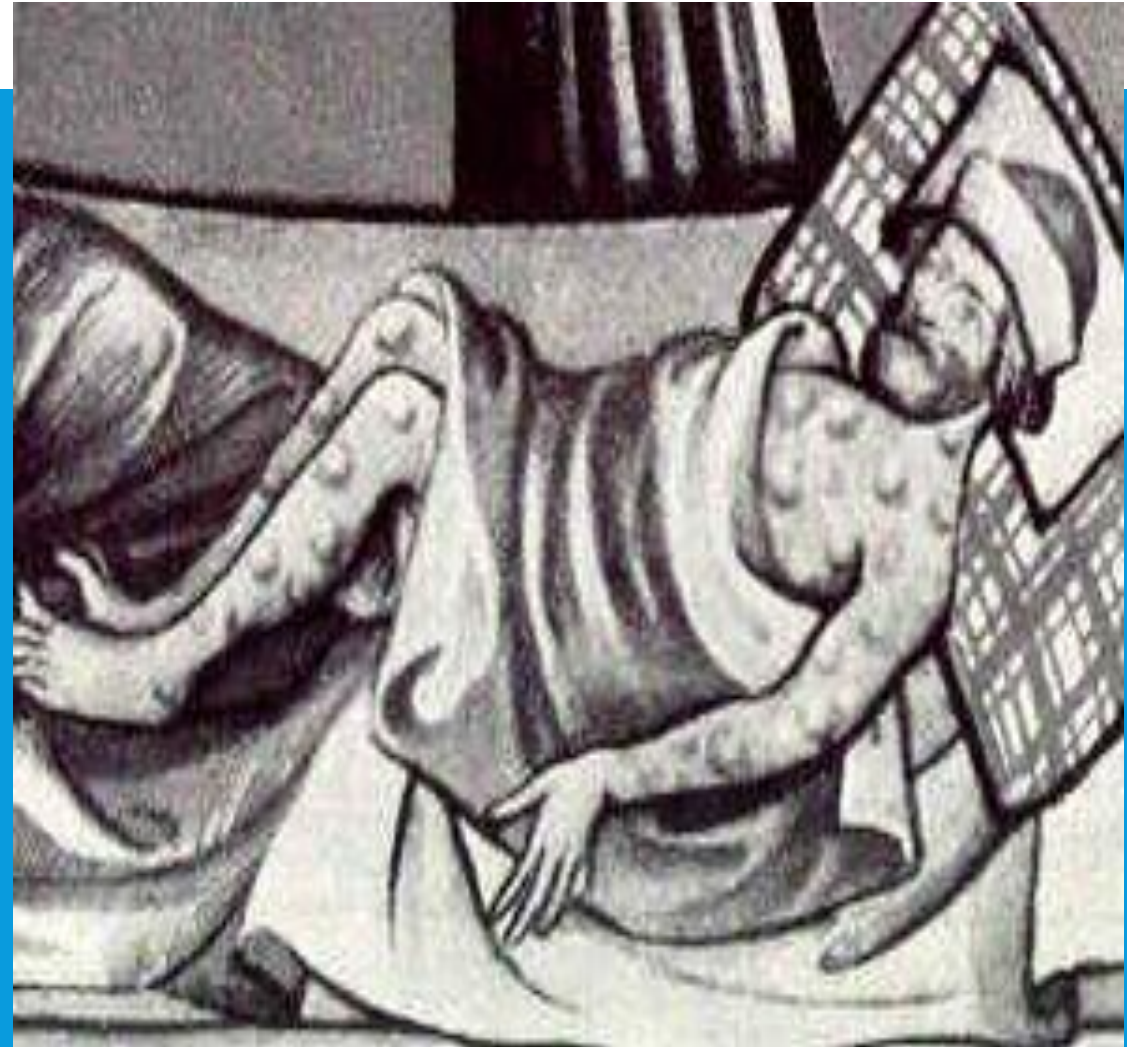
Emirates Air Line



KEY HISTORICAL EVENTS

- 1665 to 1666
- People became very sick with painful swellings all over their bodies
- Killed over 100,000 people—almost a quarter of people who lived in London's—in 18 months.
- Caught through the bite of an infected rat flea.
- Any house where someone had died would be locked up and people could not come out for 40 days
- Plague houses had a big red cross painted on the door to show that the people inside were sick!

Great Plague of London





Fleas from Rats

KEY HISTORICAL EVENTS

Great Fire of London

- Happened the year after the Great Plague, 1666.
- Burned 70,000 out of the 80,000 homes.
- Spread quickly because houses were close together and the roof was made out of straw.





KEY HISTORICAL EVENTS

- Jack the Ripper is famous killer who was never caught by the police.
- He killed women in Whitechapel in 1888
- He cut their throats and took out parts of their body
- He sent a letter written to the police saying 'you will never catch me' and he sent body parts!
- Jack the Ripper is now part of London's popular culture – tourists take walking tours

Jack the Ripper





Whitechapel

QUICK QUIZ!

Who are the bikes named after in London?

- *Bill*
- *Ben*
- *Boris*
- *Brian*



QUICK QUIZ!

Which animal did people catch the illness from in the Great Plague of London?

- *Dog*
- *Cat*
- *Rat*
- *Flea*



QUICK QUIZ!

What year was the Great Fire of London?

- 1664
- 1665
- 1666
- 1667



QUICK QUIZ!

In what part of London did Jack the Ripper kill women?

Whitechapel

- *Redchurch*
- *Bluefields*
- *Brownhaven*



END OF QUIZ PART 1!



London Eye



MI6 Building



Big Ben



Buckingham Palace



Piccadilly Circus



ArcelorMittal Orbit Slide



Activity: Drawing London



Activity: Drawing London





LONDON

