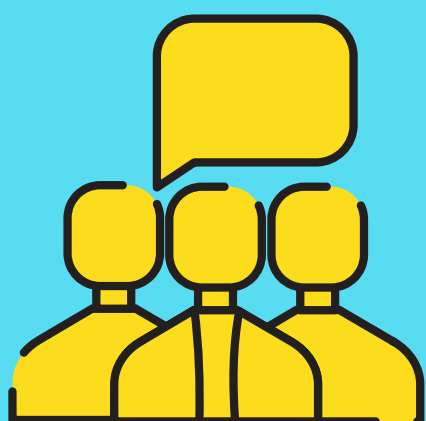


# Top netiquette rules applied to eTwinning projects



by Aneta Wilk

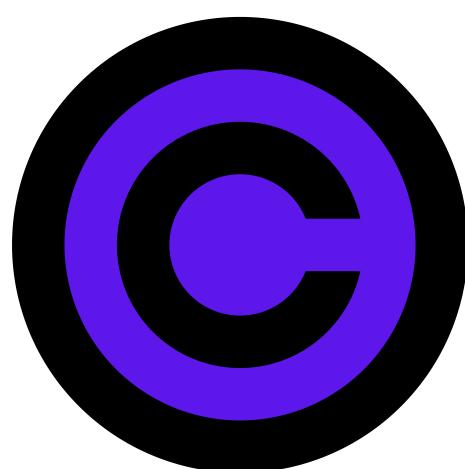


## 1) TAKE CARE ABOUT THE LANGUAGE YOU USE!

Be polite when communicating with other people.

## 2) DO NOT INFRINGE COPYRIGHT

when using someone's piece of work in your own publication.



## 3) DO NOT SPAM!

Do not send unwanted messages.

## 4) DO NOT PLACE TOO MUCH PERSONAL INFORMATION IN YOUR PROFILE

Avoid writing address, phone number, information about family members or friends.



## 5) RESPECT PRIVACY OF OTHERS

Do not quote the correspondence that others sent you.

## 6) BE IN TOUCH WITH THE PROJECT MEMBERS!

Remember to reply their emails as soon as possible.

