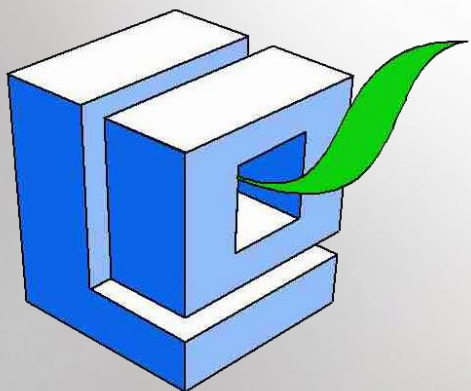


„APPLES IN VISUAL WORKS OF ART.”



Made by:

Weronika Wiśniewska

Paulina Urban

Aleksandra Urban



THE FALL OF MAN



The Fall of Man is a painting of the fall of man by the Venetian artist Titian, dating to around 1550 and now in the Prado in Madrid.

The image depicts a scene of original sin committed by the first people on Earth - Adam and Eve

POMONA



Pomona Nicolas Fouché, 1700.
Pomona was a goddess of fruitful abundance in ancient Roman religion and myth. Her name comes from the Latin word pomum, "fruit," specifically orchard fruit. She was said to be a wood nymph.

THE GARDEN OF THE HESPERIDES



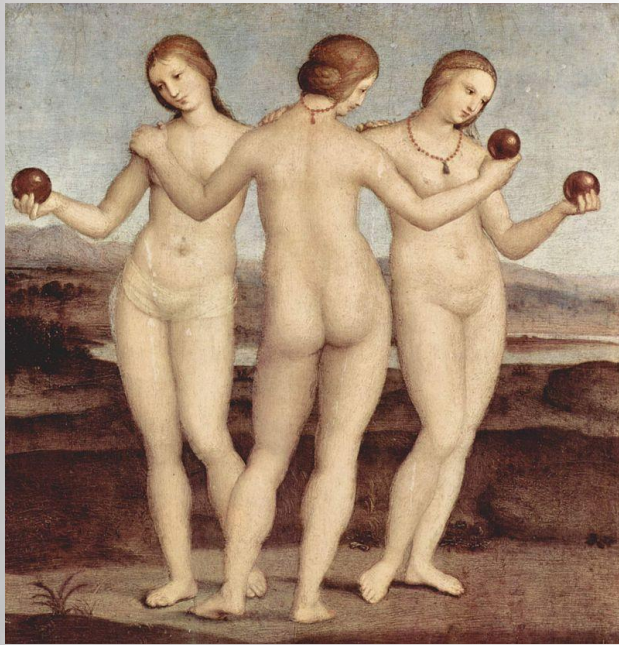
The Garden of the Hesperides by Frederick, Lord Leighton, 1892. The Garden of the Hesperides is Hera's orchard in the west, where either a single apple tree or a grove grows, producing golden apples that grant immortality when eaten.

IDUN AND THE APPLES



Idun and the Apples painted by J. Penrose (1890). In both sources, she is described as the wife of the skaldic god Bragi, and in the Prose Edda, also as a keeper of apples and granter of eternal youthfulness.

THREE GRACES



The Three Graces is an oil painting by Italian painter Raphael, housed in the Musée Condé of Chantilly, France. Apples of gold held by the Graces probably symbolize immortality, which gets selecting Virtue.

Three Graces was the first female act Raphael.

THE SON OF MAN



The Son of Man is a 1946 painting by the Belgian surrealist painter René Magritte. The painting consists of a man in an overcoat and a bowler hat standing in front of a low wall, beyond which is the sea and a cloudy sky. The man's face is largely obscured by a hovering green apple.

THE LISTENING ROOM



The Listening Room 1952 is an oil on canvas painting by the Belgian surrealist René Magritte which is currently part of the Menil Collection in Houston, Texas. Green apple was placed in room the room has wood flooring and a glass window with white trim.

TWO BRETON WITH A BASKET OF APPLES



Muzeum Narodowe w Warszawie

Władysław Ślewiński -1897.
Breton enclosed in a small frame on a background of meadows continues thoughtfully. They are close to each other, like sisters, behind them there is an apple tree. Its tempting fruit, placed in a basket facing the girls, driven perhaps their thoughts to the eternal choices between good and evil.

APPLE CORE



Claes Thure Oldenburg -1992.
American sculptor and graphic
artist , a native Swede . The
leading representative of Pop –
Art..