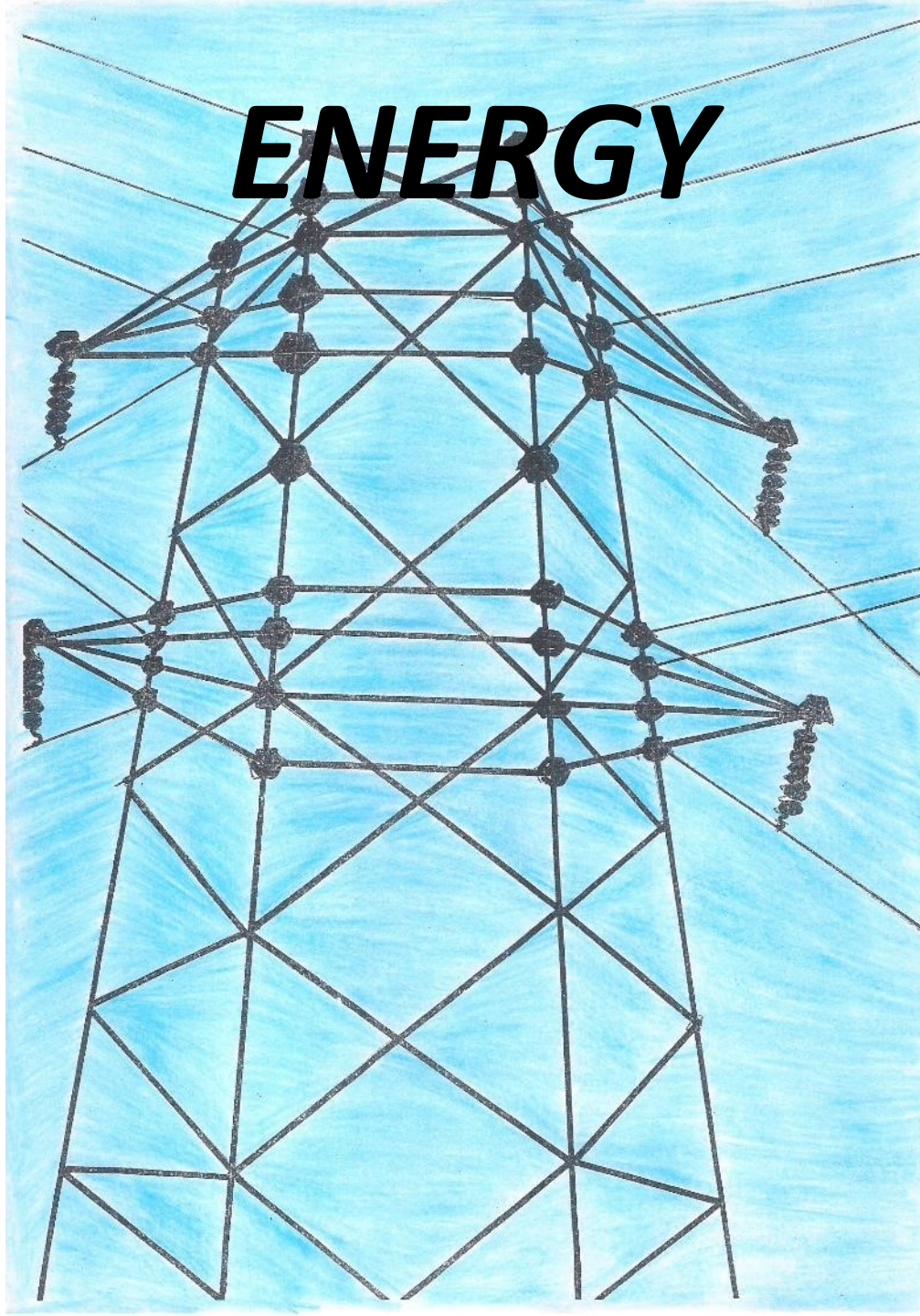
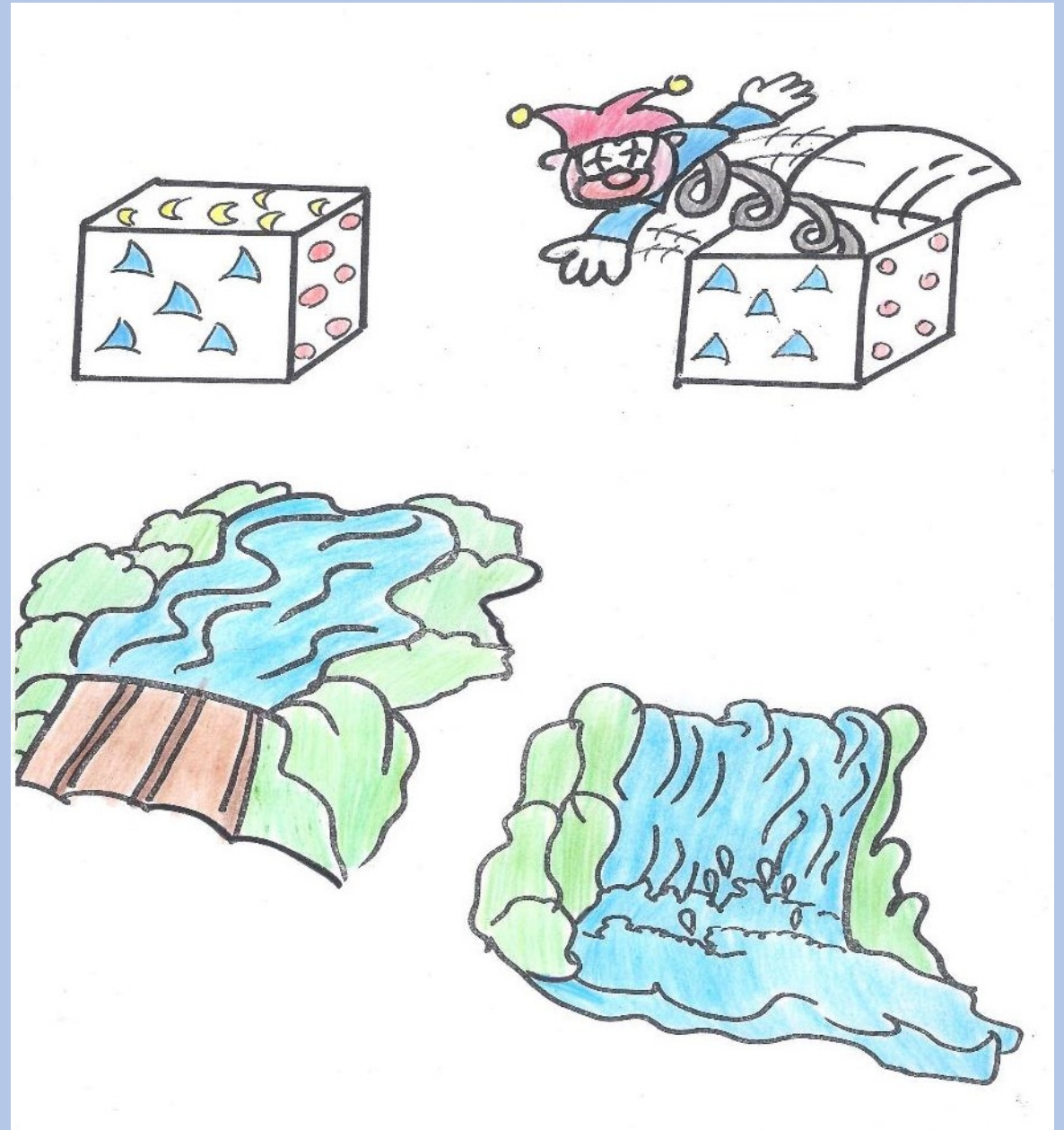


ENERGY



*Energy is the capacity
to do a job.*



Potential

We cannot see it

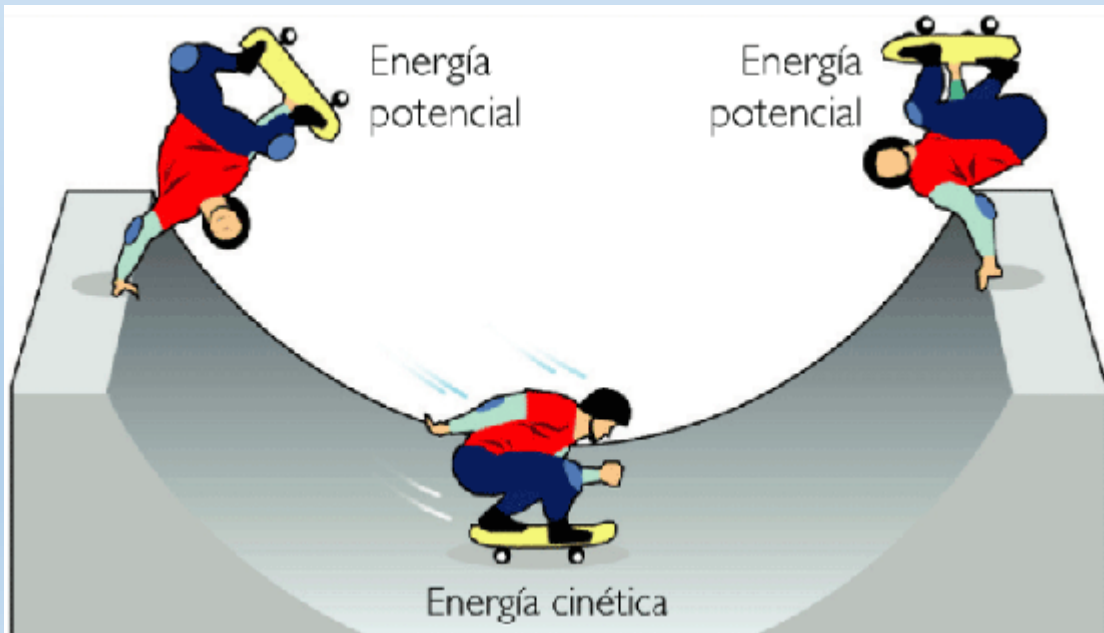
It is "hidden" in the bodies that possess it but do not exploit it in relation to the earth's gravity

Energy

Kinetics

movement

The energy that bodies have in motion;



Energy transforms itself

- ***Energy is never consumed, but is transformed from one object to another.***

For example: bike moves because the muscles energy is transformed into kinetic by the wheels.



Energy Sources

Non Renewable

they are in the subsoil
and are highly
polluting
(Fossil Energy)

Carbon
Oil
Uranium
Methane

thermoelectric power
plant

Renewable

they produce clean
energy and are little
or nothing polluting

Sun
Wind
Water
Vapor
Biomass

Solar power

wind power plant

hydroelectric power
plant

geothermal power
plant

Biomass power plant

Electric energy



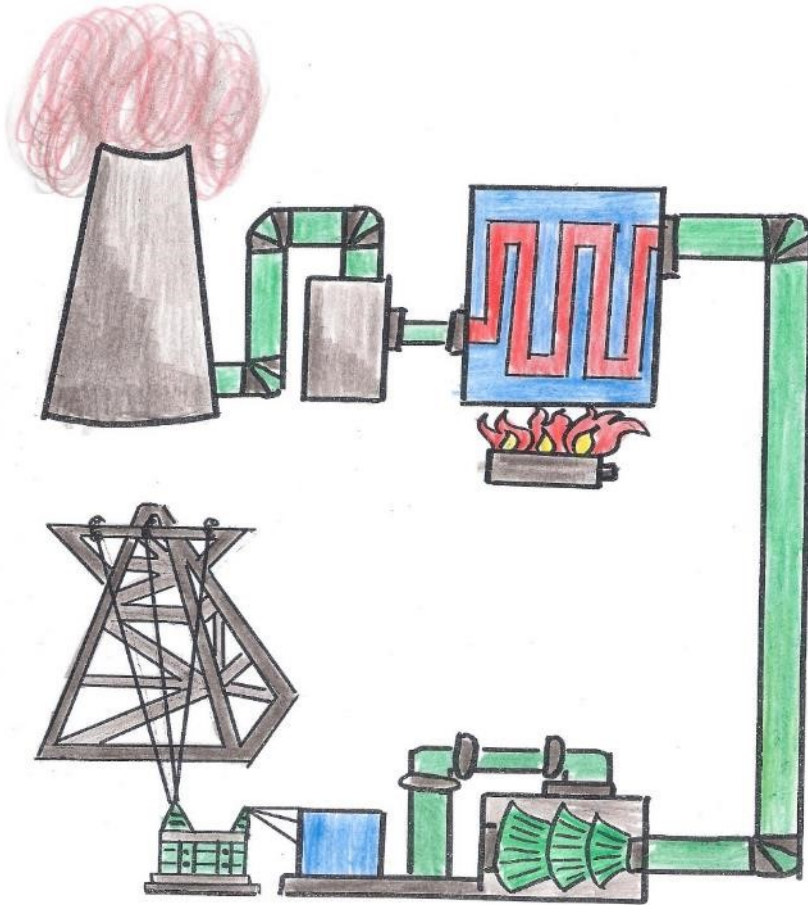
*It can be
produced from
different sources*

*Electricity can be used
to obtain: light energy,
thermal energy,
mechanical energy.....*



Thermoelectric power plant

Thermoelectric power plant: uses fossil fuel energy



The thermoelectric plant uses fossil fuels, which are also sources of exhaustible energy

**Fossil fuels
highly polluting:**

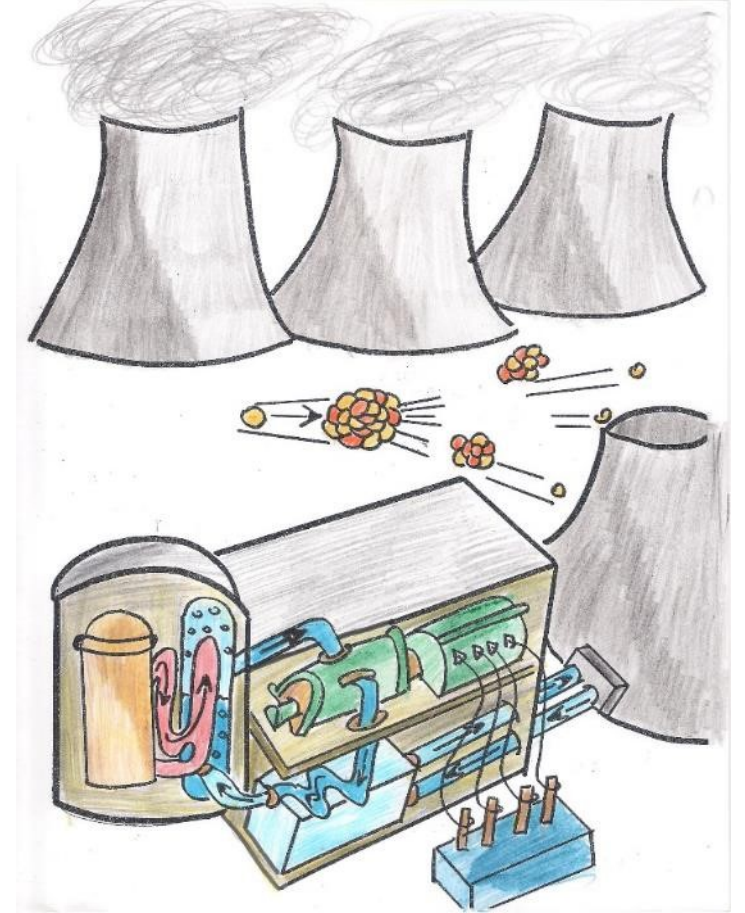
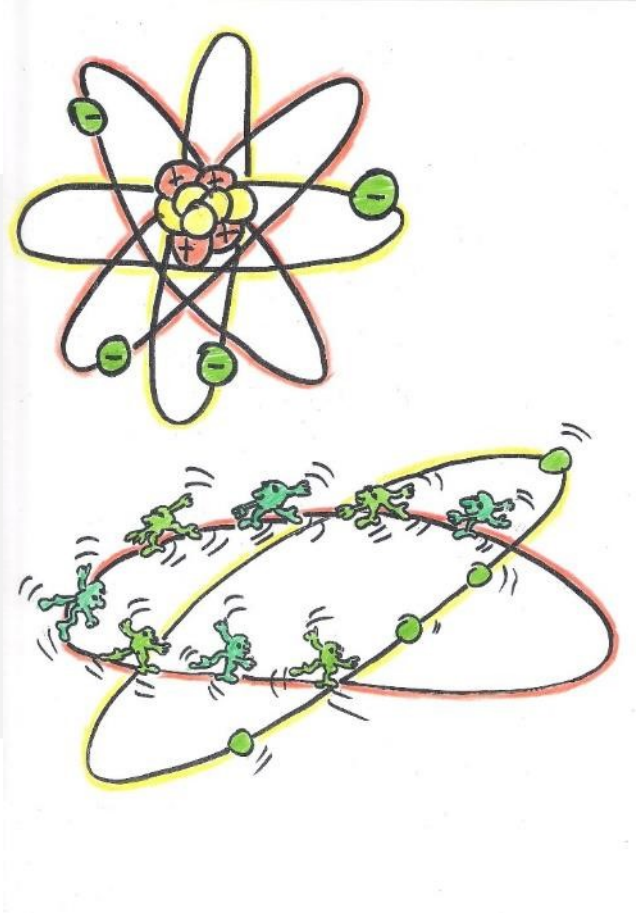
**Oil -Petroleum
Coal
Gas (natural)
Methane**



Nuclear power station

uses atomic Energy

Nuclear power plants are extremely dangerous due to the harmful radiation that can occur in case of breakdown or disposal of waste, radioactive waste.



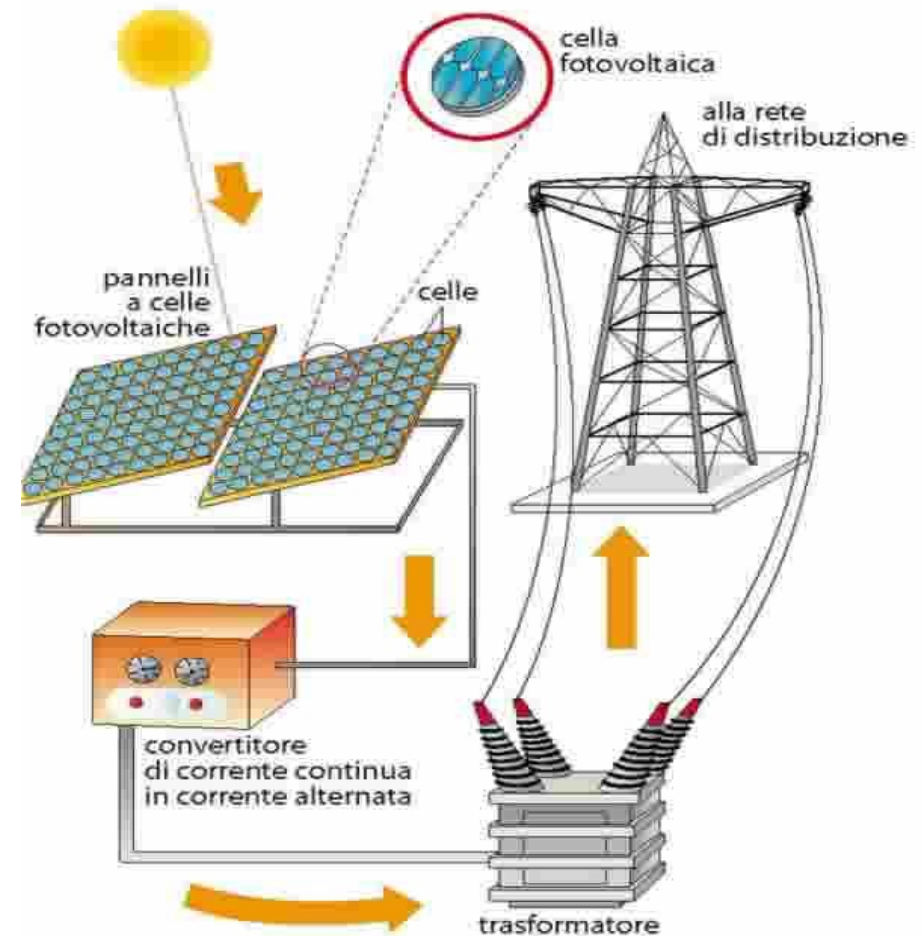
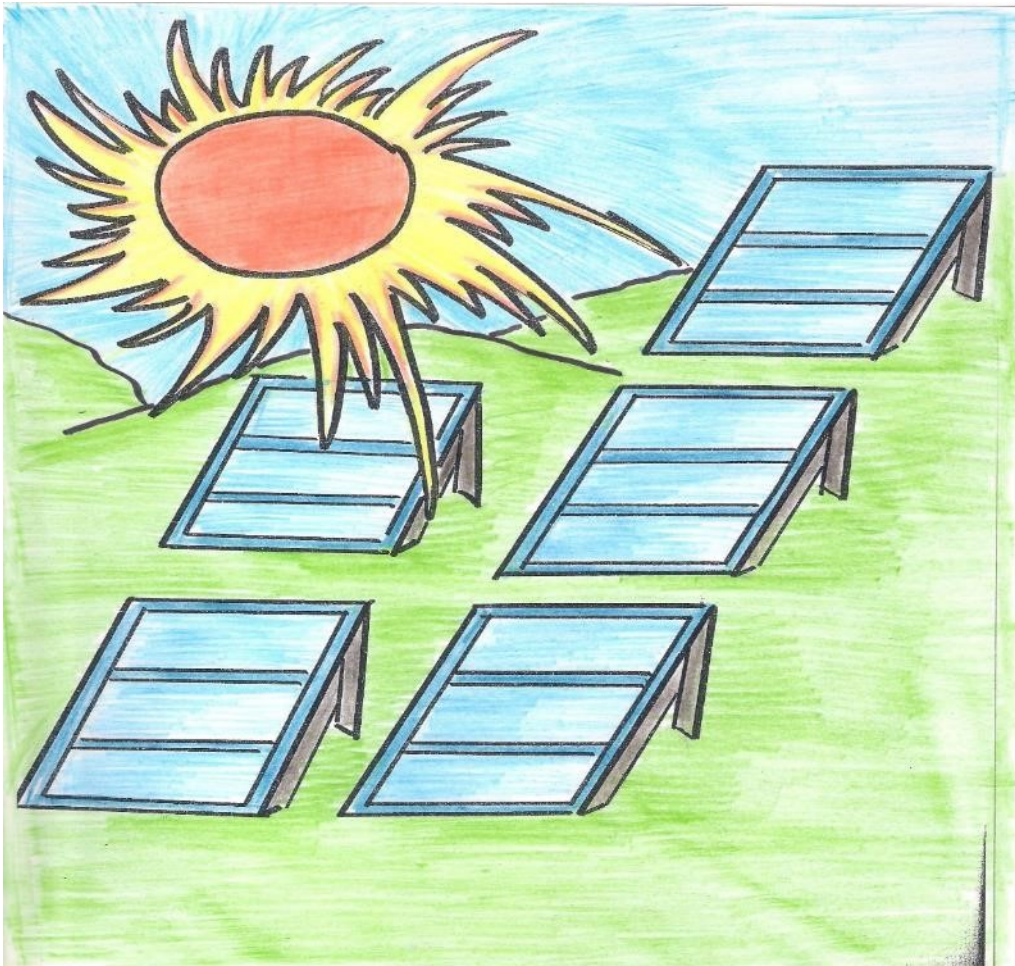
CLEAN ENERGY TO SAVE THE WORLD

- **Solar energy**
- **Wind energy**
- **Hydroelectric energy**
- **Geothermal energy**
- **Biomass energy**

***Solar Energy
is the first form of energy used by man***



Solar energy is transformed into electricity from solar and photovoltaic panels





Wind Energy



A **wind farm** is a place with wind turbines that use the wind to make electricity

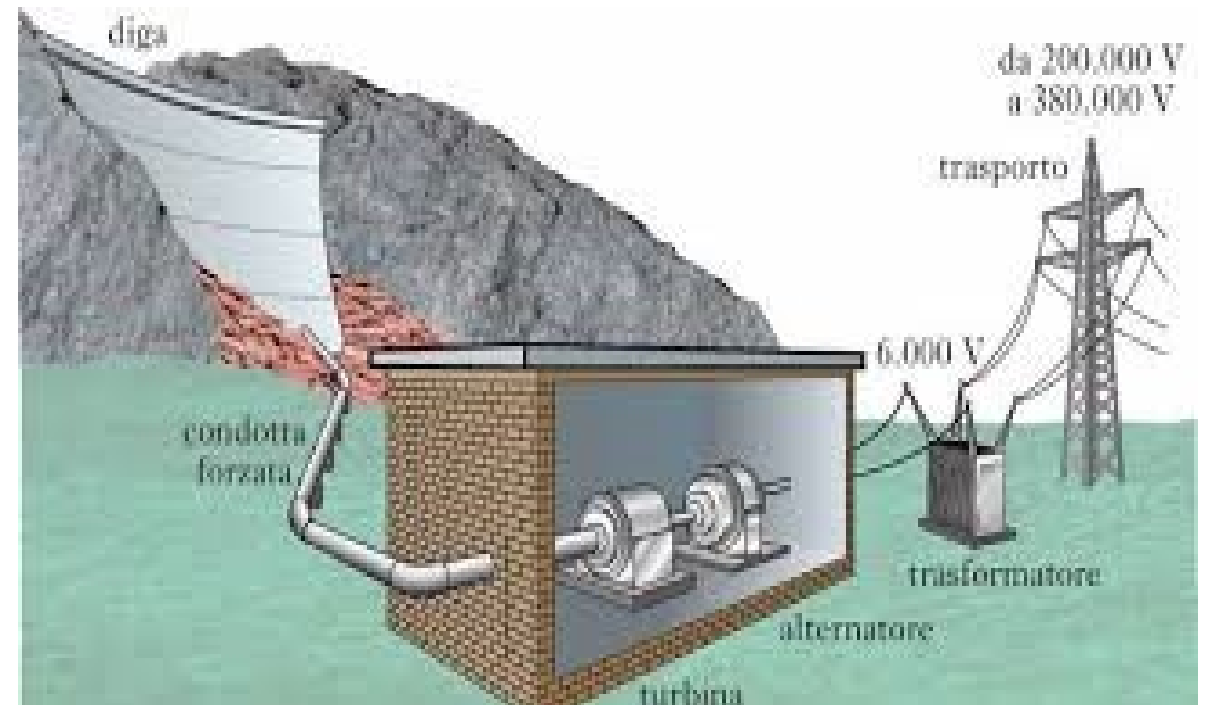
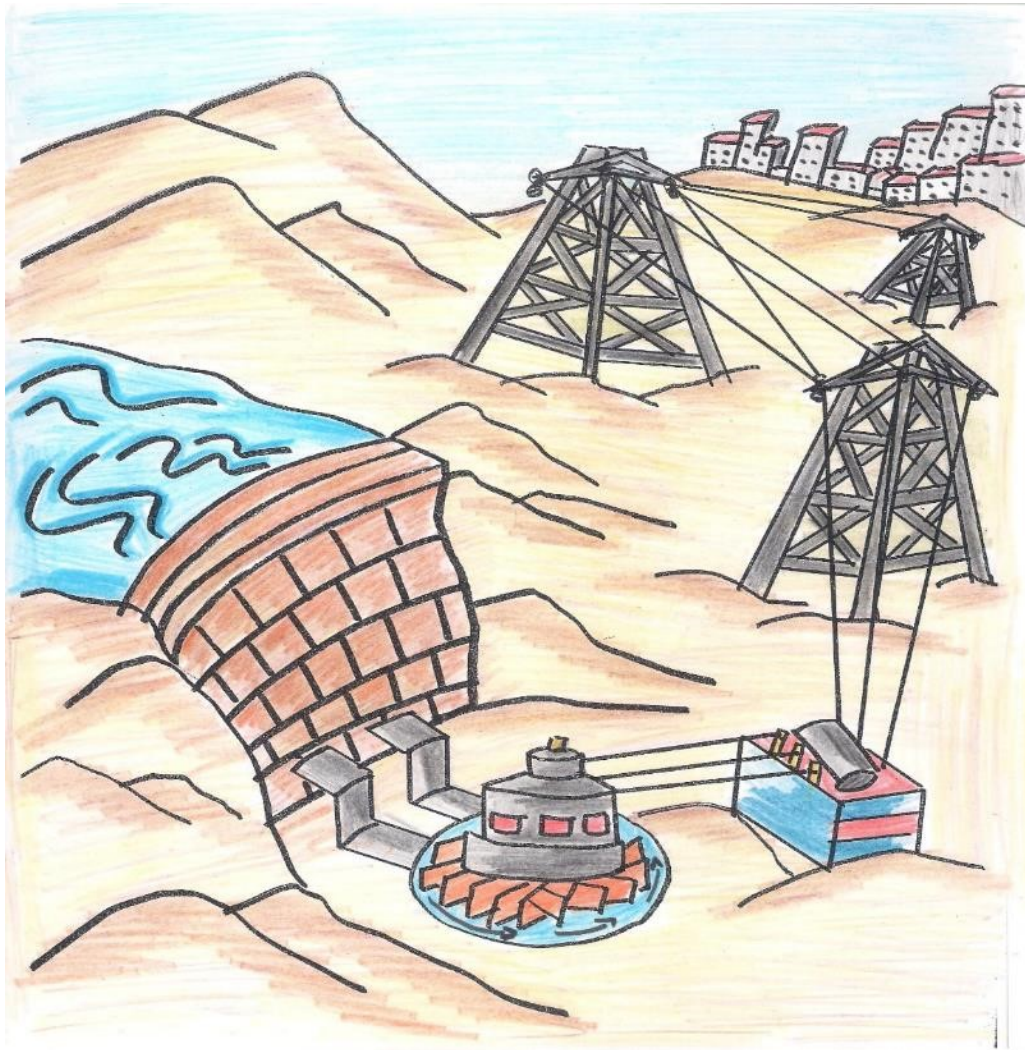


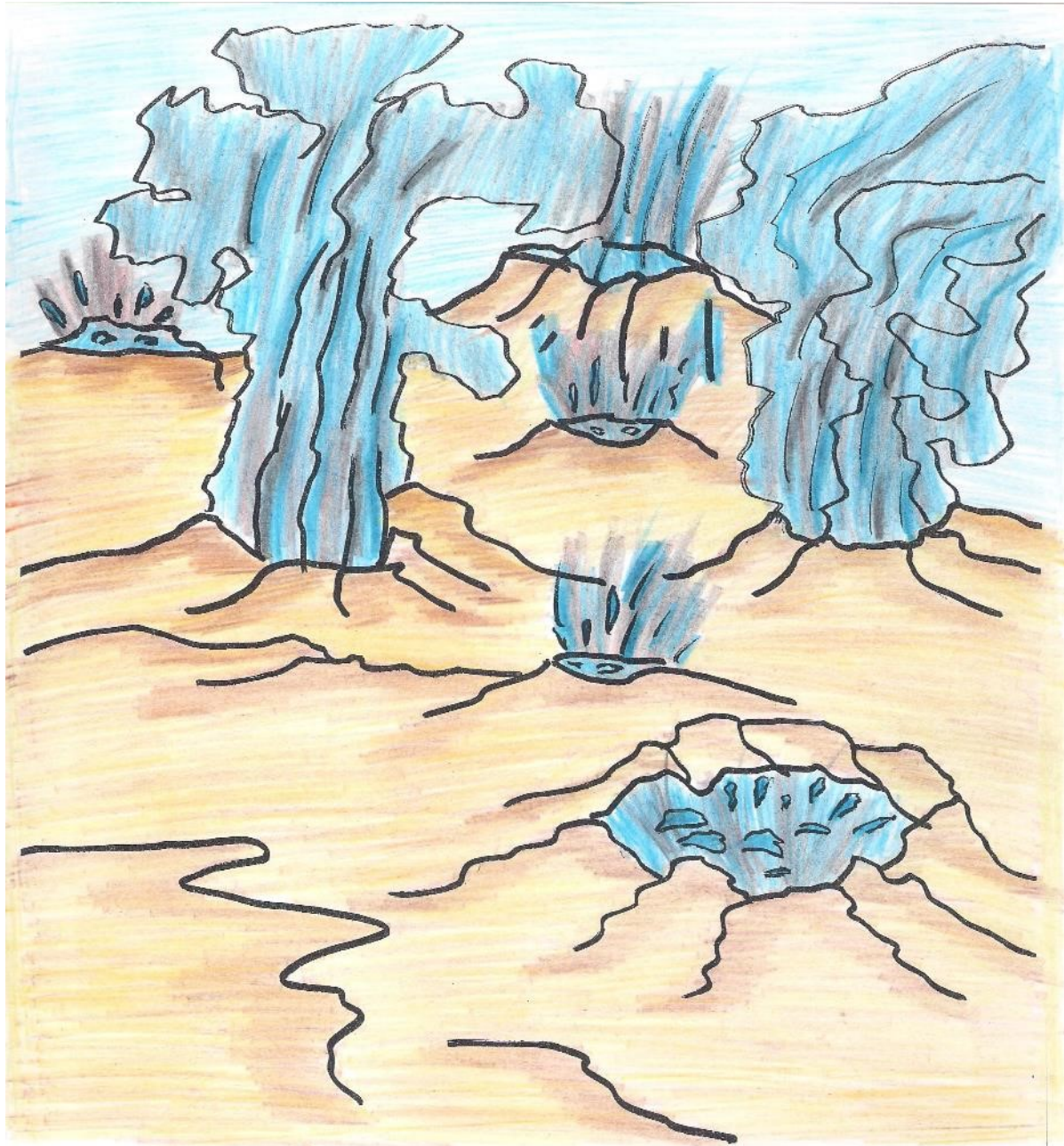
The energy of movement (kinetic) is transformed into electrical energy in the wind farm by aerogenerators

Hydroelectric energy

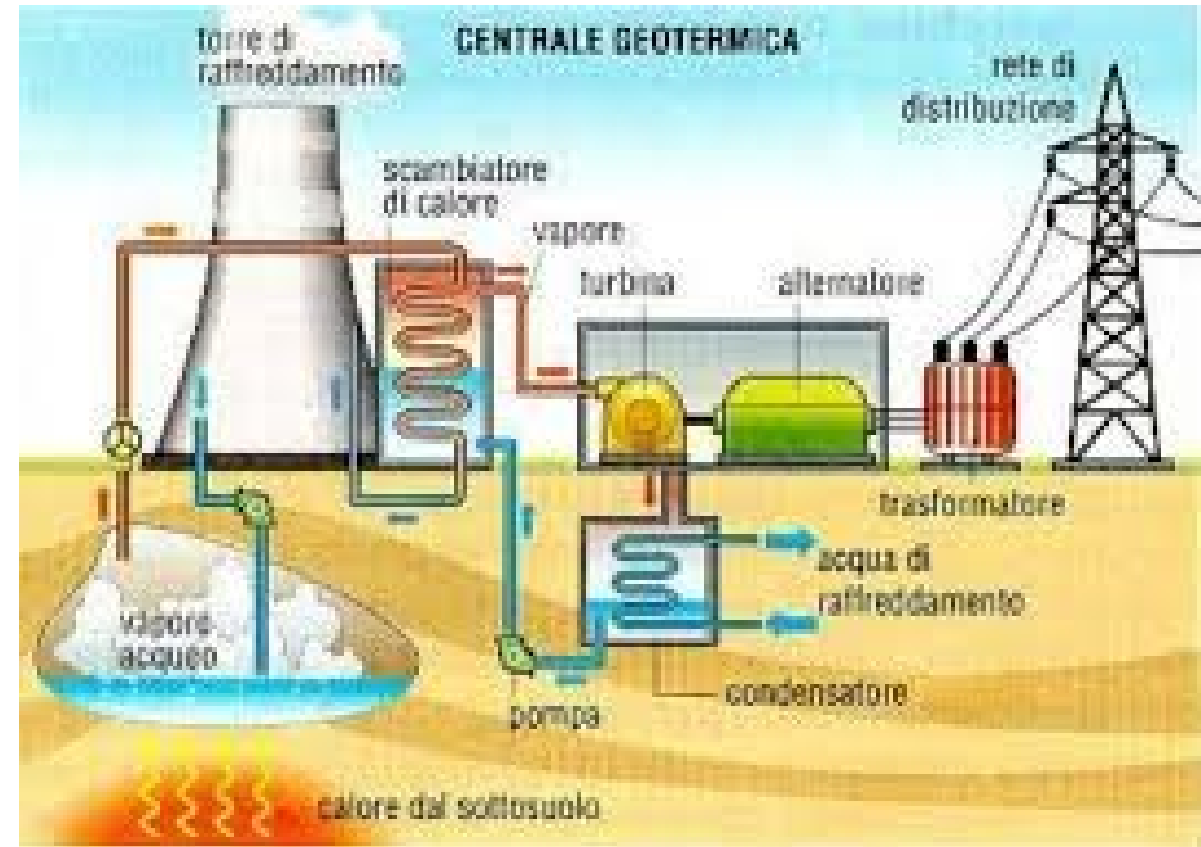


Hydroelectric plant uses the Energy of moving water.





Geothermal energy



Geothermal power plant: uses the steam coming from the subsoil.

*Biomassa energy:
comes from the organic waste*



**A message for you:
Help us to save our earth:
Recycle and
use green energy!**

